

## ERK 8 Polyclonal Antibody

<b>Catalog No :</b>	YT1630
<b>Reactivity :</b>	Human;Mouse
<b>Applications :</b>	WB;IHC;IF;ELISA
<b>Target :</b>	ERK8
<b>Fields :</b>	>>IL-17 signaling pathway
<b>Gene Name :</b>	MAPK15
<b>Protein Name :</b>	Mitogen-activated protein kinase 15
<b>Human Gene Id :</b>	225689
<b>Human Swiss Prot No :</b>	Q8TD08
<b>Mouse Gene Id :</b>	332110
<b>Mouse Swiss Prot No :</b>	Q80Y86
<b>Immunogen :</b>	The antiserum was produced against synthesized peptide derived from human MAPK15. AA range:141-190
<b>Specificity :</b>	ERK 8 Polyclonal Antibody detects endogenous levels of ERK 8 protein.
<b>Formulation :</b>	Liquid in PBS containing 50% glycerol, 0.5% BSA and 0.02% sodium azide.
<b>Source :</b>	Polyclonal, Rabbit,IgG
<b>Dilution :</b>	WB 1:500 - 1:2000. IHC 1:100 - 1:300. IF 1:200 - 1:1000. ELISA: 1:10000. Not yet tested in other applications.
<b>Purification :</b>	The antibody was affinity-purified from rabbit antiserum by affinity-chromatography using epitope-specific immunogen.
<b>Concentration :</b>	1 mg/ml

**Storage Stability :** -15°C to -25°C/1 year(Do not lower than -25°C)

**Observed Band :** 60kD

**Background :** catalytic activity:ATP + a protein = ADP + a phosphoprotein.,domain:The N-terminal region (1-20) is the minimal region necessary for ubiquitination and further proteosomal degradation.,domain:The TXY motif contains the threonine and tyrosine residues whose phosphorylation activates the MAP kinases.,enzyme regulation:Activated by threonine and tyrosine phosphorylation. Inhibited by dual specificity phosphatases, such as DUSP1.,function:In vitro, phosphorylates MBP.,PTM:Dually phosphorylated on Thr-175 and Tyr-177, which activates the enzyme. Autophosphorylated on threonine and tyrosine residues in vitro.,PTM:Ubiquitinated. Ubiquitination may allow its tight kinase activity regulation and rapid turnover. May be ubiquitinated by a SCF E3 ligase.,similarity:Belongs to the protein kinase superfamily. CMGC Ser/Thr protein kinase family. MAP kinase subfamily.,similarity:Contains 1 protein kinase domain.,subunit:Interacts with CSK/c-Src, ABL1, RET and TGFB111.,tissue specificity:Widely expressed with a maximal expression in lung and kidney.,

---

**Function :** catalytic activity:ATP + a protein = ADP + a phosphoprotein.,domain:The N-terminal region (1-20) is the minimal region necessary for ubiquitination and further proteosomal degradation.,domain:The TXY motif contains the threonine and tyrosine residues whose phosphorylation activates the MAP kinases.,enzyme regulation:Activated by threonine and tyrosine phosphorylation. Inhibited by dual specificity phosphatases, such as DUSP1.,function:In vitro, phosphorylates MBP.,PTM:Dually phosphorylated on Thr-175 and Tyr-177, which activates the enzyme. Autophosphorylated on threonine and tyrosine residues in vitro.,PTM:Ubiquitinated. Ubiquitination may allow its tight kinase activity regulation and rapid turnover. May be ubiquitinated by a SCF E3 ligase.,similarity:Belongs to the protein kinase superfamily. CMGC Ser/Thr protein kinase family. MAP kinase subfamily.,similarity:Contains 1 protein kinas

---

**Subcellular Location :** Cytoplasm, cytoskeleton, cilium basal body . Cell junction, tight junction . Cytoplasm, cytoskeleton, microtubule organizing center, centrosome, centriole . Cytoplasmic vesicle, autophagosome . Golgi apparatus . Nucleus . Cytoplasm . Cytoplasm, cytoskeleton, spindle . Co-localizes to the cytoplasm only in presence of ESRRA (PubMed:21190936). Translocates to the nucleus upon activation (PubMed:20638370). At prometaphase I, metaphase I (MI), anaphase I, telophase I, and metaphase II (MII) stages, is stably detected at the spindle (By similarity). .

---

**Expression :** Widely expressed with a maximal expression in lung and kidney.

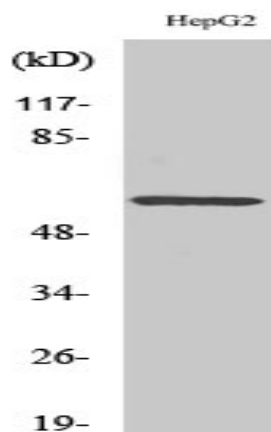
**Sort :** 984

**No4 :** 1

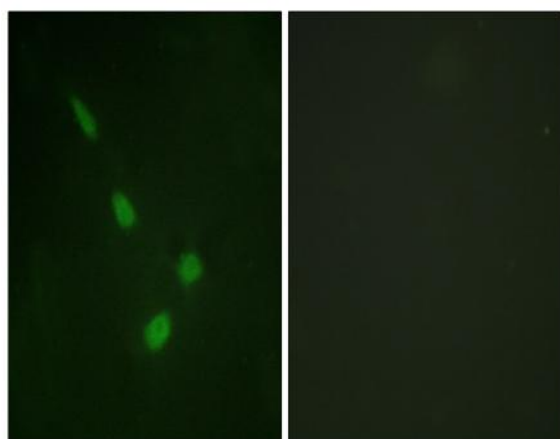
**Host :** Rabbit

**Modifications :** Unmodified

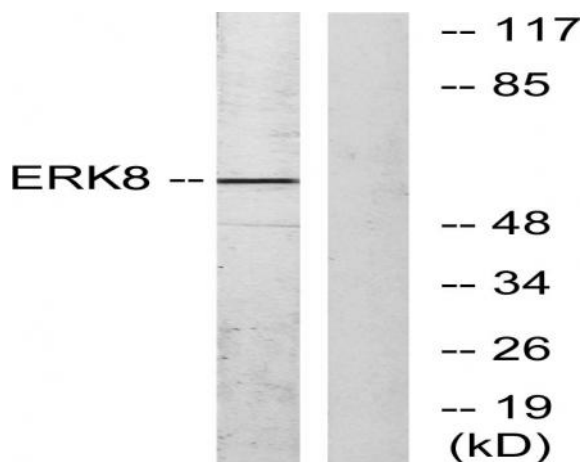
## Products Images



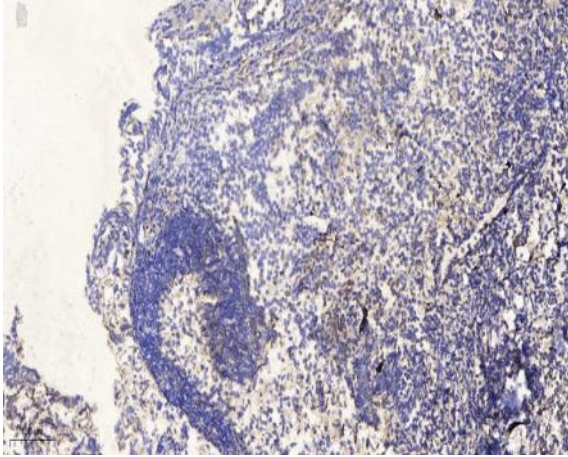
Western Blot analysis of various cells using ERK 8 Polyclonal Antibody cells nucleus extracted by Minute TM Cytoplasmic and Nuclear Fractionation kit (SC-003, Inventbiotech, MN, USA).



Immunofluorescence analysis of NIH/3T3 cells, using ERK8 Antibody. The picture on the right is blocked with the synthesized peptide.



Western blot analysis of lysates from HepG2 cells, using ERK8 Antibody. The lane on the right is blocked with the synthesized peptide.



Immunohistochemical analysis of paraffin-embedded human tonsil. 1, Antibody was diluted at 1:200(4° overnight). 2, Tris-EDTA,pH9.0 was used for antigen retrieval. 3,Secondary antibody was diluted at 1:200(room temperature, 30min).