

FAM80A Polyclonal Antibody

Catalog No :	YT1672
Reactivity :	Human;Mouse;Monkey
Applications :	WB;ELISA
Target :	FAM80A
Fields :	>>Alanine, aspartate and glutamate metabolism;>>Metabolic pathways
Gene Name :	RIMKLA
Protein Name :	N-acetylaspartyl-glutamate synthetase A
Human Gene Id :	284716
Human Swiss Prot No :	Q8IXN7
Mouse Gene Id :	194237
Mouse Swiss Prot No :	Q6PFX8
Immunogen :	The antiserum was produced against synthesized peptide derived from human RIMKA. AA range:112-161
Specificity :	FAM80A Polyclonal Antibody detects endogenous levels of FAM80A protein.
Formulation :	Liquid in PBS containing 50% glycerol, 0.5% BSA and 0.02% sodium azide.
Source :	Polyclonal, Rabbit,IgG
Dilution :	WB 1:500 - 1:2000. ELISA: 1:20000. Not yet tested in other applications.
Purification :	The antibody was affinity-purified from rabbit antiserum by affinity-chromatography using epitope-specific immunogen.
Concentration :	1 mg/ml

Storage Stability : -15°C to -25°C/1 year(Do not lower than -25°C)

Observed Band : 43kD

Background : cofactor: Binds 2 manganese ions per subunit., similarity: Belongs to the rimK family., similarity: Contains 1 ATP-grasp domain.,

Function : cofactor: Binds 2 manganese ions per subunit., similarity: Belongs to the rimK family., similarity: Contains 1 ATP-grasp domain.,

Subcellular Location : Cytoplasm .

Expression : Pancreas,

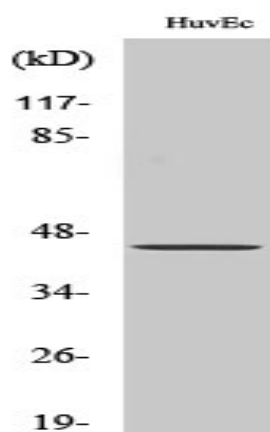
Sort : 5936

No4 : 1

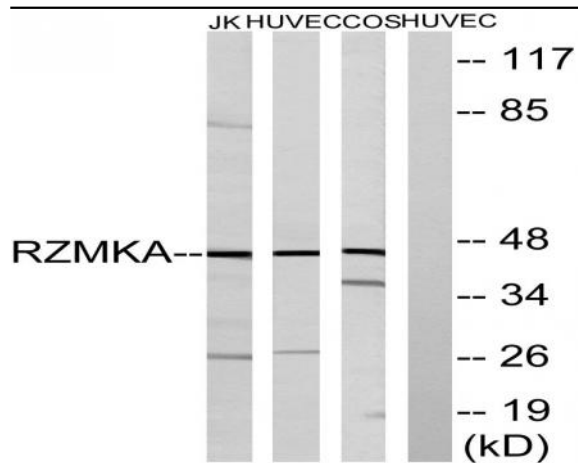
Host : Rabbit

Modifications : Unmodified

Products Images



Western Blot analysis of various cells using FAM80A Polyclonal Antibody



Western blot analysis of lysates from HUVEC, COS, and Jurkat cells, using RIMKA Antibody. The lane on the right is blocked with the synthesized peptide.