

FAM80B Polyclonal Antibody

Catalog No :	YT1673
Reactivity :	Human;Mouse;Rat;Monkey
Applications :	WB;ELISA
Target :	FAM80B
Fields :	>>Alanine, aspartate and glutamate metabolism;>>Metabolic pathways
Gene Name :	RIMKLB
Protein Name :	Beta-citryl-glutamate synthase B
Human Gene Id :	57494
Human Swiss Prot No :	Q9ULI2
Mouse Gene Id :	108653
Mouse Swiss Prot No :	Q80WS1
Immunogen :	The antiserum was produced against synthesized peptide derived from human RIMKB. AA range:177-226
Specificity :	FAM80B Polyclonal Antibody detects endogenous levels of FAM80B protein.
Formulation :	Liquid in PBS containing 50% glycerol, 0.5% BSA and 0.02% sodium azide.
Source :	Polyclonal, Rabbit,IgG
Dilution :	WB 1:500 - 1:2000. ELISA: 1:5000. Not yet tested in other applications.
Purification :	The antibody was affinity-purified from rabbit antiserum by affinity-chromatography using epitope-specific immunogen.
Concentration :	1 mg/ml

Storage Stability : -15°C to -25°C/1 year(Do not lower than -25°C)

Observed Band : 42kD

Background : cofactor: Binds 2 manganese ions per subunit., similarity: Belongs to the rimK family., similarity: Contains 1 ATP-grasp domain.,

Function : cofactor: Binds 2 manganese ions per subunit., similarity: Belongs to the rimK family., similarity: Contains 1 ATP-grasp domain.,

Subcellular Location : Cytoplasm .

Expression : Brain, Cervix, Ovary,

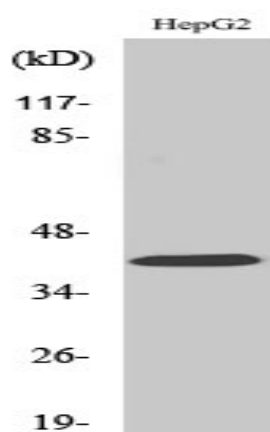
Sort : 5937

No4 : 1

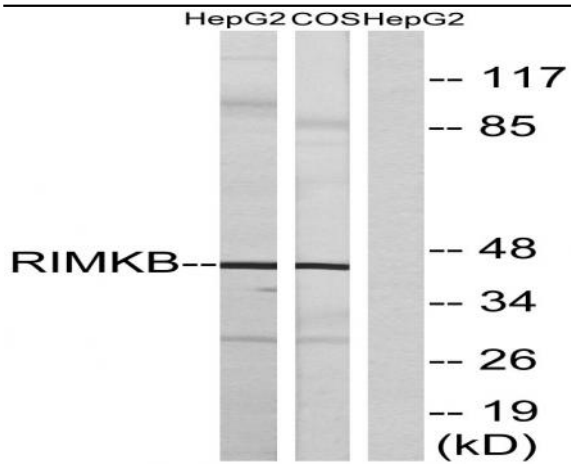
Host : Rabbit

Modifications : Unmodified

Products Images



Western Blot analysis of various cells using FAM80B Polyclonal Antibody diluted at 1:500



Western blot analysis of lysates from HepG2 and COS cells, using RIMKB Antibody. The lane on the right is blocked with the synthesized peptide.