

FASTKD1 Polyclonal Antibody

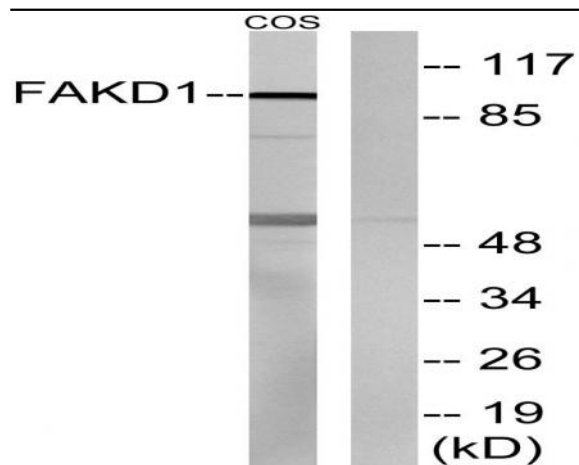
| | |
|------------------------------|---|
| Catalog No : | YT1680 |
| Reactivity : | Human;Mouse;Monkey |
| Applications : | WB;ELISA |
| Target : | FASTKD1 |
| Gene Name : | FASTKD1 |
| Protein Name : | FAST kinase domain-containing protein 1 |
| Human Gene Id : | 79675 |
| Human Swiss Prot No : | Q53R41 |
| Mouse Gene Id : | 320720 |
| Mouse Swiss Prot No : | Q6DI86 |
| Immunogen : | The antiserum was produced against synthesized peptide derived from human FAKD1. AA range:561-610 |
| Specificity : | FASTKD1 Polyclonal Antibody detects endogenous levels of FASTKD1 protein. |
| Formulation : | Liquid in PBS containing 50% glycerol, 0.5% BSA and 0.02% sodium azide. |
| Source : | Polyclonal, Rabbit,IgG |
| Dilution : | WB 1:500 - 1:2000. ELISA: 1:10000. Not yet tested in other applications. |
| Purification : | The antibody was affinity-purified from rabbit antiserum by affinity-chromatography using epitope-specific immunogen. |
| Concentration : | 1 mg/ml |
| Storage Stability : | -15°C to -25°C/1 year(Do not lower than -25°C) |

| | |
|-------------------------------|--|
| Observed Band : | 97kD |
| Background : | caution:It is uncertain whether Met-1 or Met-15 is the initiator.,similarity:Belongs to the FAST kinase family.,similarity:Contains 1 RAP domain., |
| Function : | caution:It is uncertain whether Met-1 or Met-15 is the initiator.,similarity:Belongs to the FAST kinase family.,similarity:Contains 1 RAP domain., |
| Subcellular Location : | Mitochondrion . Preferentially localizes to mitochondrial RNA granules, platforms for post-transcriptional RNA modification and ribosome assembly (PubMed:28335001). . |
| Expression : | Expression detected in spleen, thymus, testis, ovary, colon, heart, smooth muscle, kidney, brain, lung, liver and white adipose tissue with highest expression in heart. |
| Sort : | 5959 |
| No4 : | 1 |
| Host : | Rabbit |
| Modifications : | Unmodified |

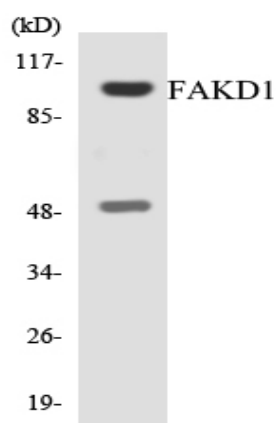
Products Images



Western Blot analysis of various cells using FASTKD1 Polyclonal Antibody



Western blot analysis of lysates from COS7 cells, using FAKD1 Antibody. The lane on the right is blocked with the synthesized peptide.



Western blot analysis of the lysates from HT-29 cells using FAKD1 antibody.