

Fibulin-2 Polyclonal Antibody

Catalog No :	YT1707
Reactivity :	Human;Mouse
Applications :	WB;IHC;IF;ELISA
Target :	Fibulin-2
Gene Name :	FBLN2
Protein Name :	Fibulin-2
Human Gene Id :	2199
Human Swiss Prot No :	P98095
Mouse Swiss Prot No :	P37889
Immunogen :	The antiserum was produced against synthesized peptide derived from human FBLN2. AA range:241-290
Specificity :	Fibulin-2 Polyclonal Antibody detects endogenous levels of Fibulin-2 protein.
Formulation :	Liquid in PBS containing 50% glycerol, 0.5% BSA and 0.02% sodium azide.
Source :	Polyclonal, Rabbit,IgG
Dilution :	WB 1:500 - 1:2000. IHC 1:100 - 1:300. IF 1:200 - 1:1000. ELISA: 1:40000. Not yet tested in other applications.
Purification :	The antibody was affinity-purified from rabbit antiserum by affinity-chromatography using epitope-specific immunogen.
Concentration :	1 mg/ml
Storage Stability :	-15°C to -25°C/1 year(Do not lower than -25°C)
Observed Band :	130kD

Background : This gene encodes an extracellular matrix protein, which belongs to the fibulin family. This protein binds various extracellular ligands and calcium. It may play a role during organ development, in particular, during the differentiation of heart, skeletal and neuronal structures. Alternatively spliced transcript variants encoding different isoforms have been identified. [provided by RefSeq, Jul 2008],

Function : developmental stage:Widely expressed during embryonic development. Primarily detected within the neuropithelium, spinal ganglia and peripheral nerves.,function:Its binding to fibronectin and some other ligands is calcium dependent.,similarity:Belongs to the fibulin family.,similarity:Contains 11 EGF-like domains.,similarity:Contains 3 anaphylatoxin-like domains.,subunit:Homotrimer; disulfide-linked. Interacts with LAMA2.,tissue specificity:Component of both basement membranes and other connective tissues. Expressed in heart, placenta and ovary.,

Subcellular Location : Secreted, extracellular space, extracellular matrix.

Expression : Component of both basement membranes and other connective tissues. Expressed in heart, placenta and ovary.

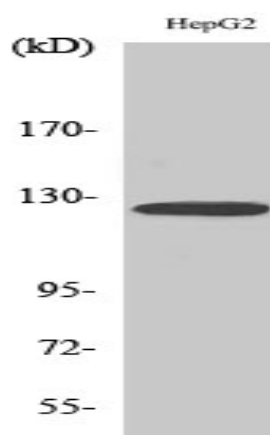
Sort : 6054

No4 : 1

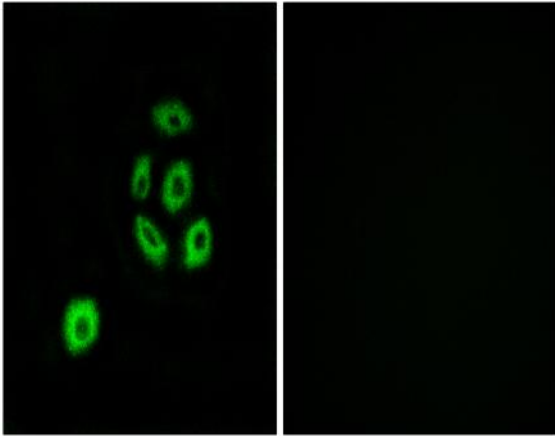
Host : Rabbit

Modifications : Unmodified

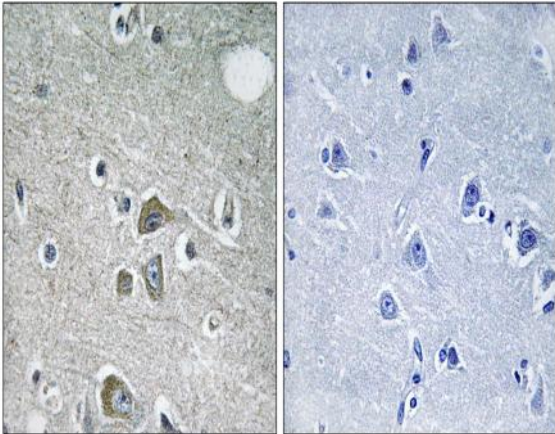
Products Images



Western Blot analysis of various cells using Fibulin-2 Polyclonal Antibody diluted at 1:500



Immunofluorescence analysis of A549 cells, using FBLN2 Antibody. The picture on the right is blocked with the synthesized peptide.



Immunohistochemistry analysis of paraffin-embedded human brain tissue, using FBLN2 Antibody. The picture on the right is blocked with the synthesized peptide.