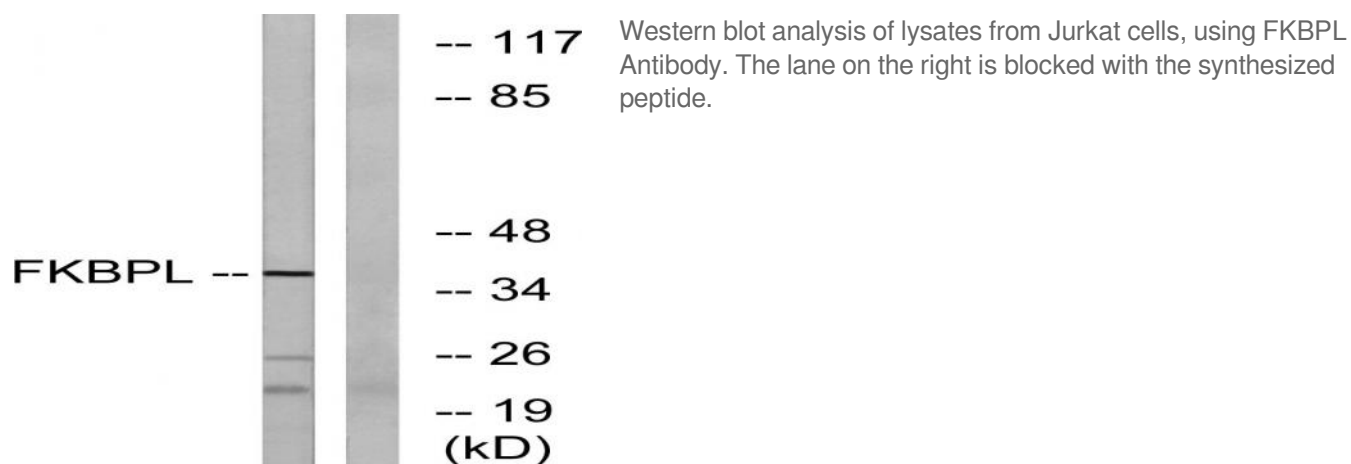


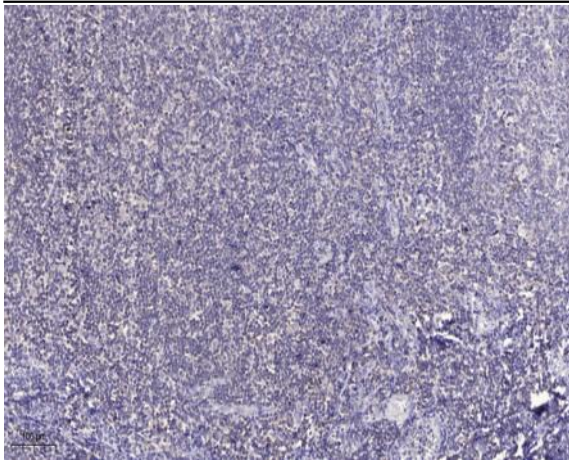
FKBPL Polyclonal Antibody

Catalog No :	YT1714
Reactivity :	Human;Mouse;Rat
Applications :	WB;IHC;IF;ELISA
Target :	FKBPL
Gene Name :	FKBPL
Protein Name :	FK506-binding protein-like
Human Gene Id :	63943
Human Swiss Prot No :	Q9UIM3
Mouse Gene Id :	56299
Mouse Swiss Prot No :	O35450
Rat Gene Id :	406168
Rat Swiss Prot No :	Q6MG81
Immunogen :	The antiserum was produced against synthesized peptide derived from human FKBPL. AA range:251-300
Specificity :	FKBPL Polyclonal Antibody detects endogenous levels of FKBPL protein.
Formulation :	Liquid in PBS containing 50% glycerol, 0.5% BSA and 0.02% sodium azide.
Source :	Polyclonal, Rabbit,IgG
Dilution :	WB 1:500 - 1:2000. IHC 1:100 - 1:300. ELISA: 1:20000.. IF 1:50-200
Purification :	The antibody was affinity-purified from rabbit antiserum by affinity-chromatography using epitope-specific immunogen.

Concentration :	1 mg/ml
Storage Stability :	-15°C to -25°C/1 year(Do not lower than -25°C)
Observed Band :	38kD
Background :	The protein encoded by this gene has similarity to the immunophilin protein family, which play a role in immunoregulation and basic cellular processes involving protein folding and trafficking. The encoded protein is thought to have a potential role in the induced radioresistance. Also it appears to have some involvement in the control of the cell cycle. [provided by RefSeq, Jul 2008],
Function :	function:May be involved in response to X-ray. Regulates p21 protein stability by binding to Hsp90 and p21.,PTM:Phosphorylated upon DNA damage, probably by ATM or ATR.,similarity:Contains 3 TPR repeats.,subunit:Forms a ternary complex with CDKN1A/p21 and HSP90AB1/Hsp90.,tissue specificity:Ubiquitously expressed with higher levels in testis.,
Subcellular Location :	endoplasmic reticulum membrane,cytosol,
Expression :	Ubiquitously expressed with higher levels in testis.
Sort :	6133
No4 :	1
Host :	Rabbit
Modifications :	Unmodified

Products Images





Immunohistochemical analysis of paraffin-embedded human tonsil. 1, Antibody was diluted at 1:200(4° overnight). 2, Tris-EDTA,pH9.0 was used for antigen retrieval. 3,Secondary antibody was diluted at 1:200(room temperature, 30min).