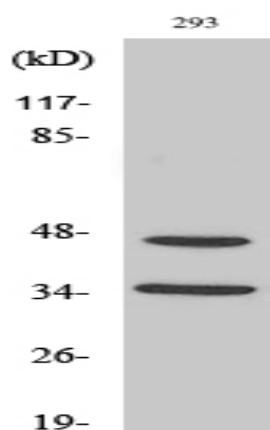


FoxB1/2 Polyclonal Antibody

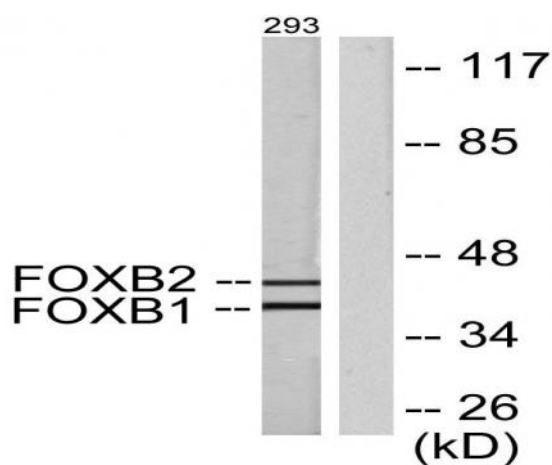
Catalog No :	YT1740
Reactivity :	Human;Mouse
Applications :	WB;IHC;IF;ELISA
Target :	FoxB1/2
Gene Name :	FOXB1/FOXB2
Protein Name :	Forkhead box protein B1/2
Human Gene Id :	27023/442425
Human Swiss Prot No :	Q99853/Q5VYV0
Mouse Gene Id :	64290/14240
Immunogen :	The antiserum was produced against synthesized peptide derived from human FOXB1/2. AA range:51-100
Specificity :	FoxB1/2 Polyclonal Antibody detects endogenous levels of FoxB1/2 protein.
Formulation :	Liquid in PBS containing 50% glycerol, 0.5% BSA and 0.02% sodium azide.
Source :	Polyclonal, Rabbit,IgG
Dilution :	WB 1:500 - 1:2000. IHC 1:100 - 1:300. ELISA: 1:20000.. IF 1:50-200
Purification :	The antibody was affinity-purified from rabbit antiserum by affinity-chromatography using epitope-specific immunogen.
Concentration :	1 mg/ml
Storage Stability :	-15°C to -25°C/1 year(Do not lower than -25°C)
Observed Band :	45kD

Background :	similarity:Contains 1 fork-head DNA-binding domain.,
Function :	similarity:Contains 1 fork-head DNA-binding domain.,
Subcellular Location :	Nucleus .
Expression :	Lung,Placenta,
Sort :	6219
No4 :	1
Host :	Rabbit
Modifications :	Unmodified

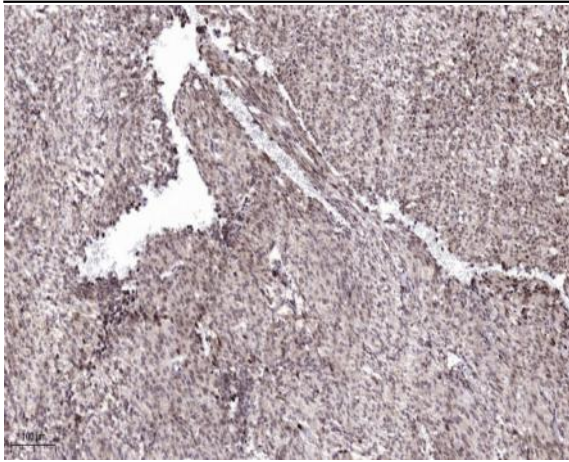
Products Images



Western Blot analysis of various cells using FoxB1/2 Polyclonal Antibody cells nucleus extracted by Minute TM Cytoplasmic and Nuclear Fractionation kit (SC-003, Inventbiotech, MN, USA).



Western blot analysis of lysates from 293 cells, using FOXB1/2 Antibody. The lane on the right is blocked with the synthesized peptide.



Immunohistochemical analysis of paraffin-embedded human Colon cancer. 1, Antibody was diluted at 1:200(4° overnight). 2, Tris-EDTA,pH9.0 was used for antigen retrieval. 3,Secondary antibody was diluted at 1:200(room temperature, 45min).