

## FRS2 Polyclonal Antibody

<b>Catalog No :</b>	YT1791
<b>Reactivity :</b>	Human;Mouse
<b>Applications :</b>	WB;ELISA
<b>Target :</b>	FRS2
<b>Fields :</b>	>>Thermogenesis;>>Neurotrophin signaling pathway;>>Proteoglycans in cancer
<b>Gene Name :</b>	FRS2
<b>Protein Name :</b>	Fibroblast growth factor receptor substrate 2
<b>Human Gene Id :</b>	10818
<b>Human Swiss Prot No :</b>	Q8WU20
<b>Mouse Gene Id :</b>	327826
<b>Mouse Swiss Prot No :</b>	Q8C180
<b>Immunogen :</b>	The antiserum was produced against synthesized peptide derived from human FRS2. AA range:162-211
<b>Specificity :</b>	FRS2 Polyclonal Antibody detects endogenous levels of FRS2 protein.
<b>Formulation :</b>	Liquid in PBS containing 50% glycerol, 0.5% BSA and 0.02% sodium azide.
<b>Source :</b>	Polyclonal, Rabbit,IgG
<b>Dilution :</b>	WB 1:500 - 1:2000. ELISA: 1:40000. Not yet tested in other applications.
<b>Purification :</b>	The antibody was affinity-purified from rabbit antiserum by affinity-chromatography using epitope-specific immunogen.
<b>Concentration :</b>	1 mg/ml

**Storage Stability :** -15°C to -25°C/1 year(Do not lower than -25°C)

**Observed Band :** 65kD

**Cell Pathway :** Neurotrophin;

**Background :** function:Adapter protein that links FGR and NGF receptors to downstream signaling pathways. Involved in the activation of MAP kinases. Modulates signaling via SHC1 by competing for a common binding site on NTRK1.,PTM:Phosphorylated on tyrosine residues upon stimulation by NGF.,PTM:Ubiquitinated when tyrosine phosphorylated and in a complex with GRB2. The unphosphorylated form is not subject to ubiquitination.,sequence caution:Translated as stop.,similarity:Contains 1 IRS-type PTB domain.,subcellular location:Cytoplasmic, membrane-bound.,subunit:Part of a complex containing FRS2, GRB2 and SOS1. Part of a complex containing GRB2 and CBL. Binds RET (By similarity). Binds FGFR1, SUC1, NTRK1, NTRK2, NTRK3 and SRC. The tyrosine-phosphorylated protein binds the SH2 domains of GRB2 and PTPN11.,tissue specificity:Highly expressed in heart, brain, spleen, lung, liver, skeletal muscle, kidney and testis.,

**Function :** function:Adapter protein that links FGR and NGF receptors to downstream signaling pathways. Involved in the activation of MAP kinases. Modulates signaling via SHC1 by competing for a common binding site on NTRK1.,PTM:Phosphorylated on tyrosine residues upon stimulation by NGF.,PTM:Ubiquitinated when tyrosine phosphorylated and in a complex with GRB2. The unphosphorylated form is not subject to ubiquitination.,sequence caution:Translated as stop.,similarity:Contains 1 IRS-type PTB domain.,subcellular location:Cytoplasmic, membrane-bound.,subunit:Part of a complex containing FRS2, GRB2 and SOS1. Part of a complex containing GRB2 and CBL. Binds RET (By similarity). Binds FGFR1, SUC1, NTRK1, NTRK2, NTRK3 and SRC. The tyrosine-phosphorylated protein binds the SH2 domains of GRB2 and PTPN11.,tissue specificity:Highly expressed in heart, brain, spleen, lung, liver, skeletal muscle, kidney and t

**Subcellular Location :** Endomembrane system. Cytoplasmic, membrane-bound.

**Expression :** Highly expressed in heart, brain, spleen, lung, liver, skeletal muscle, kidney and testis.

**Tag :** hot

**Sort :** 6307

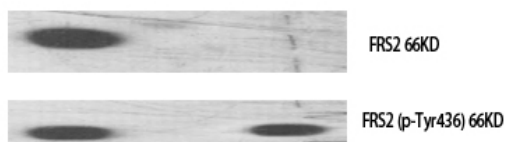
**No4 :** 1

**Host :** Rabbit

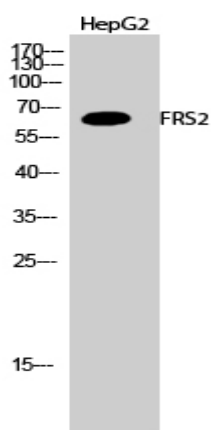
**Modifications :** Unmodified

## Products Images

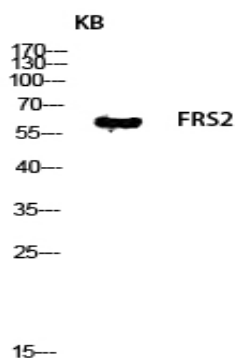
Western Blot analysis of various cells using FRS2 Polyclonal Antibody diluted at 1:1000



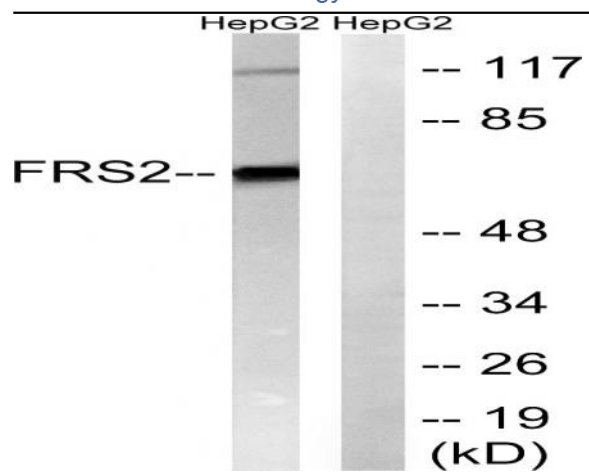
-	+	- phospho-peptide
-	-	+ non-phospho-peptide
+	+	+ 3T3 NGF(customer's sample)



Western Blot analysis of HepG2 cells using FRS2 Polyclonal Antibody diluted at 1:1000



Western blot analysis of KB lysis using FRS2 antibody. Antibody was diluted at 1:1000



Western blot analysis of lysates from HepG2 cells, using FRS2 Antibody. The lane on the right is blocked with the synthesized peptide.