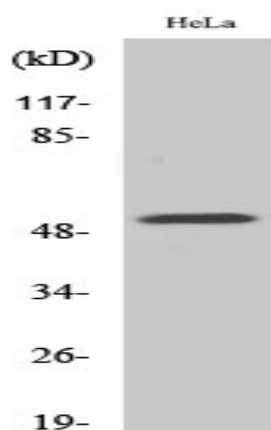


G3BP2 Polyclonal Antibody

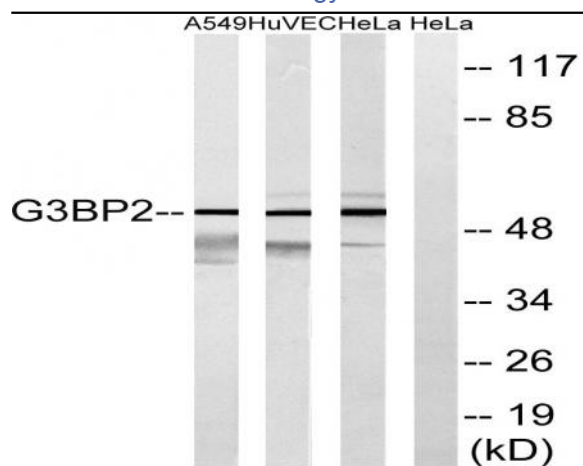
Catalog No :	YT1809
Reactivity :	Human;Mouse
Applications :	WB;ELISA
Target :	G3BP2
Gene Name :	G3BP2
Protein Name :	Ras GTPase-activating protein-binding protein 2
Human Gene Id :	9908
Human Swiss Prot No :	Q9UN86
Mouse Gene Id :	23881
Mouse Swiss Prot No :	P97379
Immunogen :	The antiserum was produced against synthesized peptide derived from human G3BP2. AA range:433-482
Specificity :	G3BP2 Polyclonal Antibody detects endogenous levels of G3BP2 protein.
Formulation :	Liquid in PBS containing 50% glycerol, 0.5% BSA and 0.02% sodium azide.
Source :	Polyclonal, Rabbit,IgG
Dilution :	WB 1:500 - 1:2000. ELISA: 1:10000. Not yet tested in other applications.
Purification :	The antibody was affinity-purified from rabbit antiserum by affinity-chromatography using epitope-specific immunogen.
Concentration :	1 mg/ml
Storage Stability :	-15°C to -25°C/1 year(Do not lower than -25°C)

Observed Band : 55kD**Background :** function:Probable scaffold protein that may be involved in mRNA transport
.,PTM:Arg-457 and Arg-468 are dimethylated, probably to asymmetric dimethylarginine.,similarity:Contains 1 NTF2 domain.,similarity:Contains 1 RRM (RNA recognition motif) domain.,subunit:Binds to the N-terminal domain of I-kappa-B-alpha.,**Function :** function:Probable scaffold protein that may be involved in mRNA transport
.,PTM:Arg-457 and Arg-468 are dimethylated, probably to asymmetric dimethylarginine.,similarity:Contains 1 NTF2 domain.,similarity:Contains 1 RRM (RNA recognition motif) domain.,subunit:Binds to the N-terminal domain of I-kappa-B-alpha.,**Subcellular Location :** Cytoplasm . Cytoplasm, Stress granule .**Expression :** B-cell,Brain,Colon carcinoma,Epithelium,Lung carcinoma,Ovarian carc**Sort :** 6341**No4 :** 1**Host :** Rabbit**Modifications :** Unmodified

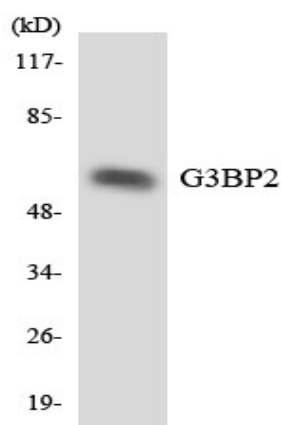
Products Images



Western Blot analysis of various cells using G3BP2 Polyclonal Antibody



Western blot analysis of lysates from HeLa, HUVEC, and A549 cells, using G3BP2 Antibody. The lane on the right is blocked with the synthesized peptide.



Western blot analysis of the lysates from HeLa cells using G3BP2 antibody.