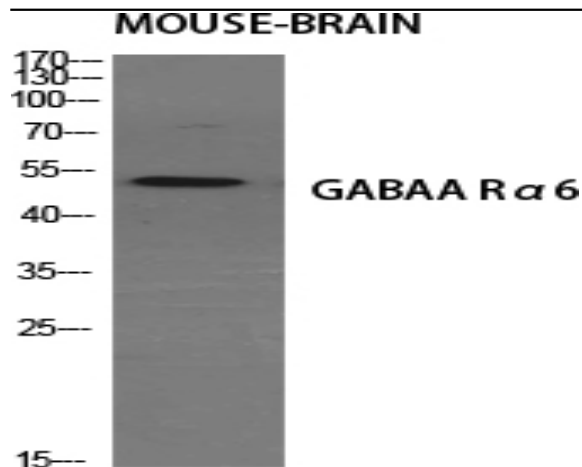


GABAA R α 6 Polyclonal Antibody

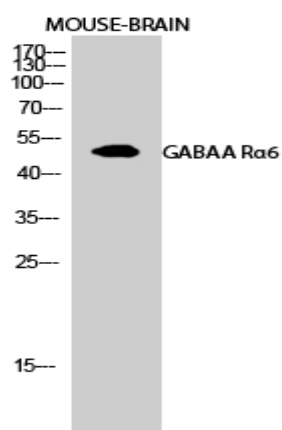
Catalog No :	YT1823
Reactivity :	Human;Mouse;Rat
Applications :	WB;ELISA
Target :	GABAA R α 6
Fields :	>>Neuroactive ligand-receptor interaction;>>Retrograde endocannabinoid signaling;>>GABAergic synapse;>>Taste transduction;>>Morphine addiction;>>Nicotine addiction
Gene Name :	GABRA6
Protein Name :	Gamma-aminobutyric acid receptor subunit alpha-6
Human Gene Id :	2559
Human Swiss Prot No :	Q16445
Mouse Gene Id :	14399
Mouse Swiss Prot No :	P16305
Rat Gene Id :	29708
Rat Swiss Prot No :	P30191
Immunogen :	The antiserum was produced against synthesized peptide derived from human GABRA6. AA range:61-110
Specificity :	GABAA R α 6 Polyclonal Antibody detects endogenous levels of GABAA R α 6 protein.
Formulation :	Liquid in PBS containing 50% glycerol, 0.5% BSA and 0.02% sodium azide.
Source :	Polyclonal, Rabbit,IgG

Dilution :	WB 1:500 - 1:2000. ELISA: 1:40000. Not yet tested in other applications.
Purification :	The antibody was affinity-purified from rabbit antiserum by affinity-chromatography using epitope-specific immunogen.
Concentration :	1 mg/ml
Storage Stability :	-15°C to -25°C/1 year(Do not lower than -25°C)
Observed Band :	51kD
Cell Pathway :	Neuroactive ligand-receptor interaction;
Background :	GABA is the major inhibitory neurotransmitter in the mammalian brain where it acts at GABA-A receptors, which are ligand-gated chloride channels. Chloride conductance of these channels can be modulated by agents such as benzodiazepines that bind to the GABA-A receptor. At least 16 distinct subunits of GABA-A receptors have been identified. [provided by RefSeq, Jul 2008],
Function :	function:GABA, the major inhibitory neurotransmitter in the vertebrate brain, mediates neuronal inhibition by binding to the GABA/benzodiazepine receptor and opening an integral chloride channel.,online information:Forbidden fruit - Issue 56 of March 2005,similarity:Belongs to the ligand-gated ionic channel (TC 1.A.9) family.,subunit:Binds UBQLN1 (By similarity). Generally pentameric. There are five types of GABA(A) receptor chains: alpha, beta, gamma, delta, and rho.,
Subcellular Location :	Cell junction, synapse, postsynaptic cell membrane; Multi-pass membrane protein. Cell membrane; Multi-pass membrane protein.
Expression :	Cerebellum,
Sort :	6374
No4 :	1
Host :	Rabbit
Modifications :	Unmodified

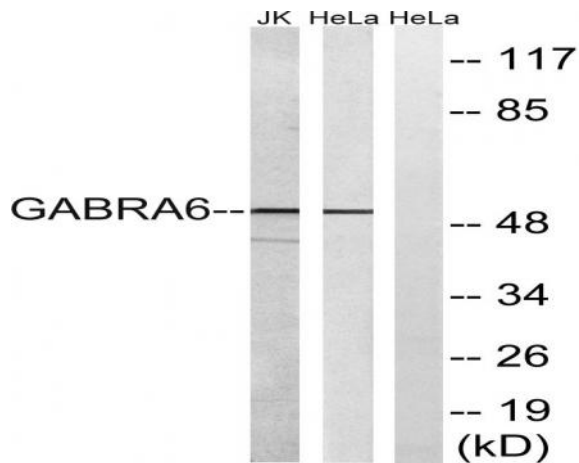
Products Images



Western Blot analysis of various cells using GABAA R α 6
 Polyclonal Antibody diluted at 1:500



Western Blot analysis of MOUSE-BRAIN cells using GABAA R α 6
 Polyclonal Antibody diluted at 1:500



Western blot analysis of lysates from HeLa and Jurkat cells,
 using GABRA6 Antibody. The lane on the right is blocked with the
 synthesized peptide.