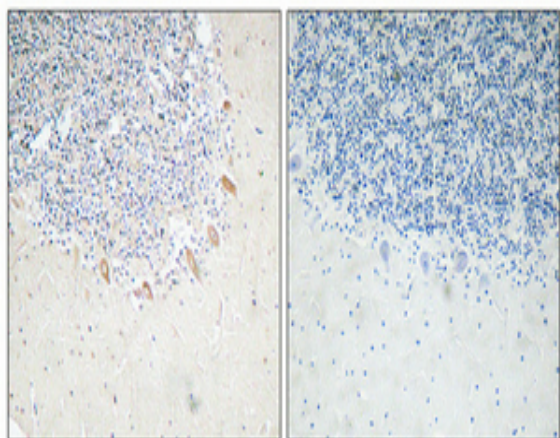


GABAA R β 2 Polyclonal Antibody

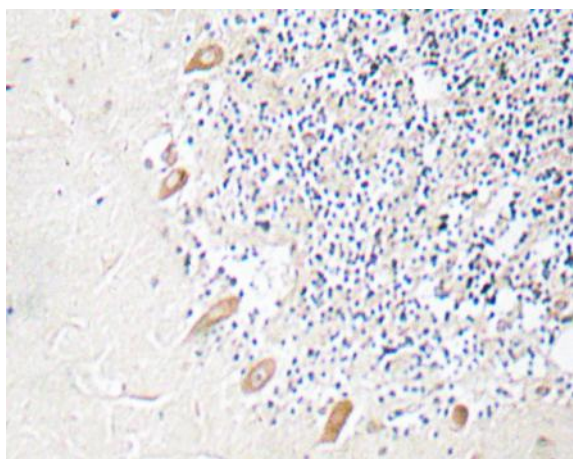
Catalog No :	YT1825
Reactivity :	Human;Mouse;Rat
Applications :	WB;IHC;IF;ELISA
Target :	GABAA R β 2
Fields :	>>Neuroactive ligand-receptor interaction;>>Retrograde endocannabinoid signaling;>>Serotonergic synapse;>>GABAergic synapse;>>Morphine addiction;>>Nicotine addiction
Gene Name :	GABRB2
Protein Name :	Gamma-aminobutyric acid receptor subunit beta-2
Human Gene Id :	2561
Human Swiss Prot No :	P47870
Mouse Gene Id :	14401
Mouse Swiss Prot No :	P63137
Rat Gene Id :	25451
Rat Swiss Prot No :	P63138
Immunogen :	The antiserum was produced against synthesized peptide derived from human GABAA R β 2. AA range:382-431
Specificity :	GABAA R β 2 Polyclonal Antibody detects endogenous levels of GABAA R β 2 protein.
Formulation :	Liquid in PBS containing 50% glycerol, 0.5% BSA and 0.02% sodium azide.
Source :	Polyclonal, Rabbit,IgG

Dilution :	WB 1:500-2000 IHC 1:100 - 1:300. ELISA: 1:40000.. IF 1:50-200
Purification :	The antibody was affinity-purified from rabbit antiserum by affinity-chromatography using epitope-specific immunogen.
Concentration :	1 mg/ml
Storage Stability :	-15°C to -25°C/1 year(Do not lower than -25°C)
Molecularweight :	55kD
Cell Pathway :	Neuroactive ligand-receptor interaction;
Background :	The gamma-aminobutyric acid (GABA) A receptor is a multisubunit chloride channel that mediates the fastest inhibitory synaptic transmission in the central nervous system. This gene encodes GABA A receptor, beta 2 subunit. It is mapped to chromosome 5q34 in a cluster comprised of genes encoding alpha 1 and gamma 2 subunits of the GABA A receptor. Alternative splicing of this gene generates 2 transcript variants, differing by a 114 bp insertion. [provided by RefSeq, Jul 2008],
Function :	function:GABA, the major inhibitory neurotransmitter in the vertebrate brain, mediates neuronal inhibition by binding to the GABA/benzodiazepine receptor and opening an integral chloride channel.,online information:Forbidden fruit - Issue 56 of March 2005,similarity:Belongs to the ligand-gated ionic channel (TC 1.A.9) family.,subunit:Generally pentameric. There are five types of GABA(A) receptor chains: alpha, beta, gamma, delta, and rho. Binds UBQLN1.,
Subcellular Location :	Cell junction, synapse, postsynaptic cell membrane ; Multi-pass membrane protein . Cell membrane ; Multi-pass membrane protein . Cytoplasmic vesicle membrane .
Expression :	Isoform 1 and isoform 2 show reduced expression in schizophrenic brain. Isoform 3 shows increased expression in schizophrenic and bipolar disorder brains while isoform 4 shows reduced expression.
Tag :	hot
Sort :	6377
No4 :	1
Host :	Rabbit
Modifications :	Unmodified

Products Images



Immunohistochemical analysis of paraffin-embedded Human brain. Antibody was diluted at 1:100(4° overnight). High-pressure and temperature Tris-EDTA,pH8.0 was used for antigen retrieval. Negative contrl (right) obtaned from antibody was pre-absorbed by immunogen peptide.



Immunohistochemistry analysis of GABAA Rβ2 antibody in paraffin-embedded human brain tissue.