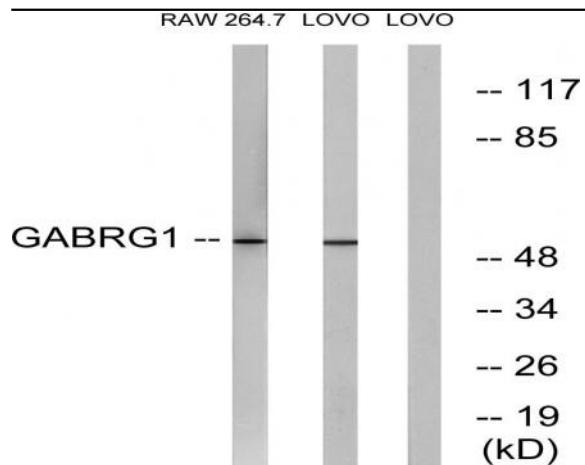


GABAA Ry1 Polyclonal Antibody

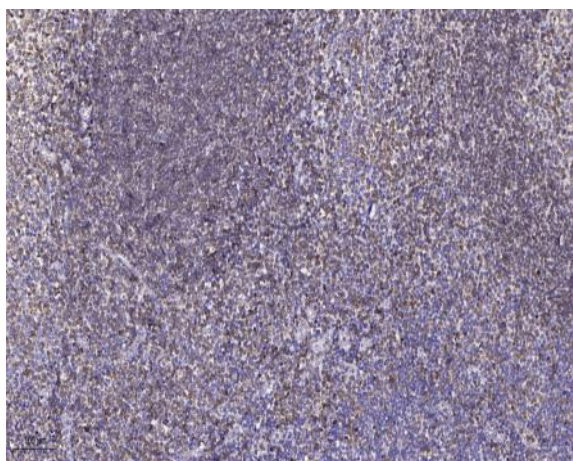
| | |
|------------------------------|--|
| Catalog No : | YT1826 |
| Reactivity : | Human;Mouse;Rat |
| Applications : | WB;IHC;IF;ELISA |
| Target : | GABAA Ry1 |
| Fields : | >>Neuroactive ligand-receptor interaction;>>Retrograde endocannabinoid signaling;>>GABAergic synapse;>>Morphine addiction;>>Nicotine addiction |
| Gene Name : | GABRG1 |
| Protein Name : | Gamma-aminobutyric acid receptor subunit gamma-1 |
| Human Gene Id : | 2565 |
| Human Swiss Prot No : | Q8N1C3 |
| Mouse Gene Id : | 14405 |
| Mouse Swiss Prot No : | Q9R0Y8 |
| Rat Gene Id : | 140674 |
| Rat Swiss Prot No : | P23574 |
| Immunogen : | The antiserum was produced against synthesized peptide derived from human GABRG1. AA range:11-60 |
| Specificity : | GABAA Ry1 Polyclonal Antibody detects endogenous levels of GABAA Ry1 protein. |
| Formulation : | Liquid in PBS containing 50% glycerol, 0.5% BSA and 0.02% sodium azide. |
| Source : | Polyclonal, Rabbit,IgG |
| Dilution : | WB 1:500 - 1:2000. IHC 1:100 - 1:300. ELISA: 1:20000.. IF 1:50-200 |

| | |
|-------------------------------|---|
| Purification : | The antibody was affinity-purified from rabbit antiserum by affinity-chromatography using epitope-specific immunogen. |
| Concentration : | 1 mg/ml |
| Storage Stability : | -15°C to -25°C/1 year(Do not lower than -25°C) |
| Observed Band : | 54kD |
| Cell Pathway : | Neuroactive ligand-receptor interaction; |
| Background : | The protein encoded by this gene belongs to the ligand-gated ionic channel family. It is an integral membrane protein and plays an important role in inhibiting neurotransmission by binding to the benzodiazepine receptor and opening an integral chloride channel. This gene is clustered with three other family members on chromosome 4. [provided by RefSeq, Jul 2008], |
| Function : | function:GABA, the major inhibitory neurotransmitter in the vertebrate brain, mediates neuronal inhibition by binding to the GABA/benzodiazepine receptor and opening an integral chloride channel.,miscellaneous:This subunit carries the benzodiazepine binding site.,online information:Forbidden fruit - Issue 56 of March 2005,PTM:May be palmitoylated.,similarity:Belongs to the ligand-gated ionic channel (TC 1.A.9) family.,subunit:Generally pentameric. There are five types of GABA(A) receptor chains: alpha, beta, gamma, delta, and rho., |
| Subcellular Location : | Cell junction, synapse, postsynaptic cell membrane; Multi-pass membrane protein. Cell membrane; Multi-pass membrane protein. |
| Expression : | Amygdala,Brain, |
| Sort : | 6378 |
| No4 : | 1 |
| Host : | Rabbit |
| Modifications : | Unmodified |

Products Images



Western blot analysis of lysates from LOVO and RAW264.7 cells, using GABRG1 Antibody. The lane on the right is blocked with the synthesized peptide.



Immunohistochemical analysis of paraffin-embedded human tonsil. 1, Antibody was diluted at 1:200(4° overnight). 2, Tris-EDTA,pH9.0 was used for antigen retrieval. 3,Secondary antibody was diluted at 1:200(room temperature, 45min).