

## GDF-8 Polyclonal Antibody

<b>Catalog No :</b>	YT1890
<b>Reactivity :</b>	Human;Mouse
<b>Applications :</b>	WB;IHC;IF;ELISA
<b>Target :</b>	GDF-8
<b>Fields :</b>	>>Cytokine-cytokine receptor interaction
<b>Gene Name :</b>	MSTN
<b>Protein Name :</b>	Growth/differentiation factor 8
<b>Human Gene Id :</b>	2660
<b>Human Swiss Prot No :</b>	O14793
<b>Mouse Gene Id :</b>	17700
<b>Mouse Swiss Prot No :</b>	O08689
<b>Immunogen :</b>	The antiserum was produced against synthesized peptide derived from human GDF-8. AA range:38-87
<b>Specificity :</b>	GDF-8 Polyclonal Antibody detects endogenous levels of GDF-8 protein.
<b>Formulation :</b>	Liquid in PBS containing 50% glycerol, 0.5% BSA and 0.02% sodium azide.
<b>Source :</b>	Polyclonal, Rabbit,IgG
<b>Dilution :</b>	WB 1:500-2000 IHC 1:100 - 1:300. ELISA: 1:10000. IF 1:50-200
<b>Purification :</b>	The antibody was affinity-purified from rabbit antiserum by affinity-chromatography using epitope-specific immunogen.
<b>Concentration :</b>	1 mg/ml

**Storage Stability :** -15°C to -25°C/1 year(Do not lower than -25°C)

**Molecularweight :** 43kD

**Background :** myostatin(MSTN) Homo sapiens This gene encodes a secreted ligand of the TGF-beta (transforming growth factor-beta) superfamily of proteins. Ligands of this family bind various TGF-beta receptors leading to recruitment and activation of SMAD family transcription factors that regulate gene expression. The encoded preproprotein is proteolytically processed to generate each subunit of the disulfide-linked homodimer. This protein negatively regulates skeletal muscle cell proliferation and differentiation. Mutations in this gene are associated with increased skeletal muscle mass in humans and other mammals. [provided by RefSeq, Jul 2016],

**Function :** function:Acts specifically as a negative regulator of skeletal muscle growth.,online information:Myostatin entry,similarity:Belongs to the TGF-beta family.,subunit:Homodimer; disulfide-linked (By similarity). Interacts with WFIKKN2, leading to inhibit its activity.,

**Subcellular Location :** Secreted .

**Expression :** Colon,Muscle,Pericardium,Skeletal muscle,

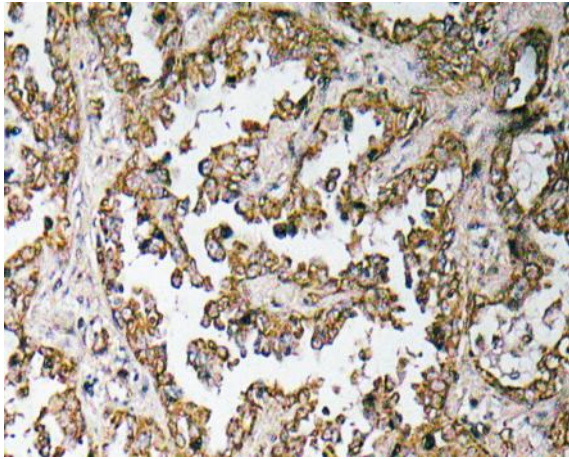
**Sort :** 6535

**No4 :** 1

**Host :** Rabbit

**Modifications :** Unmodified

## Products Images



Immunohistochemistry analysis of GDF-8 antibody in paraffin-embedded human lung carcinoma tissue.