

## GDF-9 Polyclonal Antibody

<b>Catalog No :</b>	YT1891
<b>Reactivity :</b>	Human;Mouse
<b>Applications :</b>	WB;IHC;IF;ELISA
<b>Target :</b>	GDF-9
<b>Fields :</b>	>>Cytokine-cytokine receptor interaction
<b>Gene Name :</b>	GDF9
<b>Protein Name :</b>	Growth/differentiation factor 9
<b>Human Gene Id :</b>	2661
<b>Human Swiss Prot No :</b>	O60383
<b>Mouse Swiss Prot No :</b>	Q07105
<b>Immunogen :</b>	The antiserum was produced against synthesized peptide derived from human GDF-9. AA range:273-322
<b>Specificity :</b>	GDF-9 Polyclonal Antibody detects endogenous levels of GDF-9 protein.
<b>Formulation :</b>	Liquid in PBS containing 50% glycerol, 0.5% BSA and 0.02% sodium azide.
<b>Source :</b>	Polyclonal, Rabbit,IgG
<b>Dilution :</b>	WB 1:500 - 1:2000. IHC 1:100 - 1:300. ELISA: 1:10000.. IF 1:50-200
<b>Purification :</b>	The antibody was affinity-purified from rabbit antiserum by affinity-chromatography using epitope-specific immunogen.
<b>Concentration :</b>	1 mg/ml
<b>Storage Stability :</b>	-15°C to -25°C/1 year(Do not lower than -25°C)

**Observed Band :** 57kD

**Background :** This gene encodes a secreted ligand of the TGF-beta (transforming growth factor-beta) superfamily of proteins. Ligands of this family bind various TGF-beta receptors leading to recruitment and activation of SMAD family transcription factors that regulate gene expression. The encoded preprotein is proteolytically processed to generate each subunit of the disulfide-linked homodimer. This protein regulates ovarian function. Reduced expression of this gene may be associated with polycystic ovary syndrome and mutations in this gene may be more common in mothers of dizygotic twins. [provided by RefSeq, Jul 2016],

**Function :** function:Required for ovarian folliculogenesis.,similarity:Belongs to the TGF-beta family.,subunit:Homodimer or heterodimer (Potential). But, in contrast to other members of this family, cannot be disulfide-linked.,

**Subcellular Location :** Secreted .

**Expression :** Expressed in ovarian granulosa cells. Present in oocytes of primary follicles (at protein level).

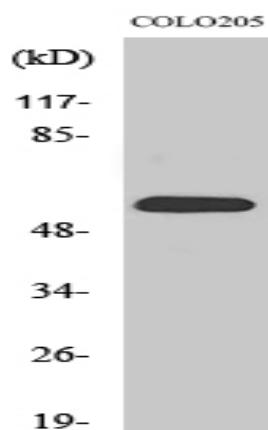
**Sort :** 6536

**No4 :** 1

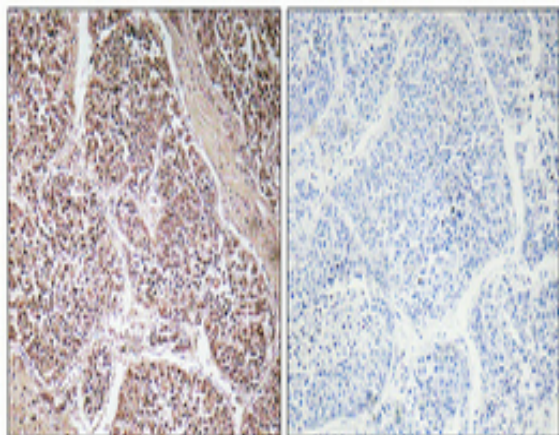
**Host :** Rabbit

**Modifications :** Unmodified

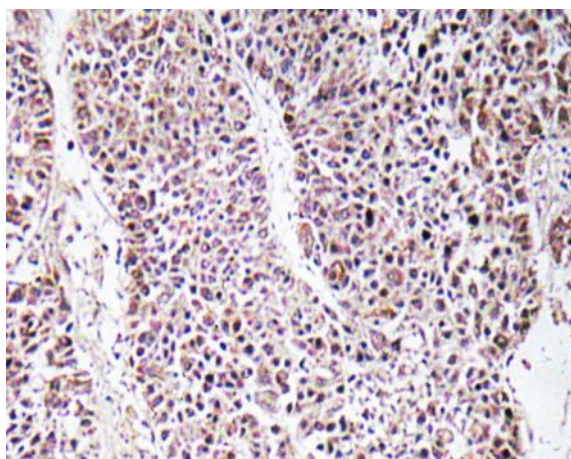
## Products Images



Western Blot analysis of various cells using GDF-9 Polyclonal Antibody



Immunohistochemical analysis of paraffin-embedded Human lung cancer. Antibody was diluted at 1:100(4° overnight). High-pressure and temperature Tris-EDTA,pH8.0 was used for antigen retrieval. Negative contrl (right) obtaned from antibody was pre-absorbed by immunogen peptide.



Immunohistochemistry analysis of GDF-9 antibody in paraffin-embedded human liver carcinoma tissue.



Western blot analysis of lysate from COLO205 cells, using GDF-9 antibody.