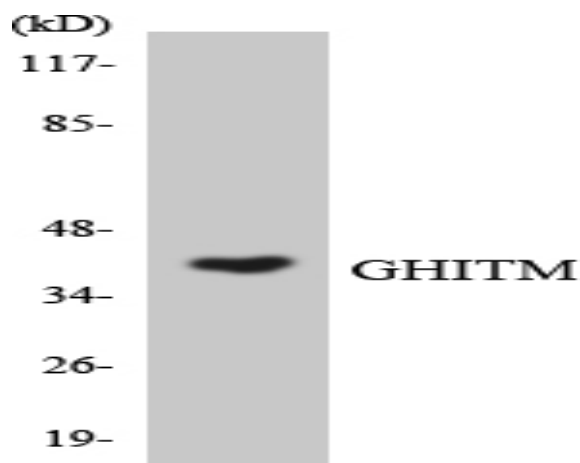
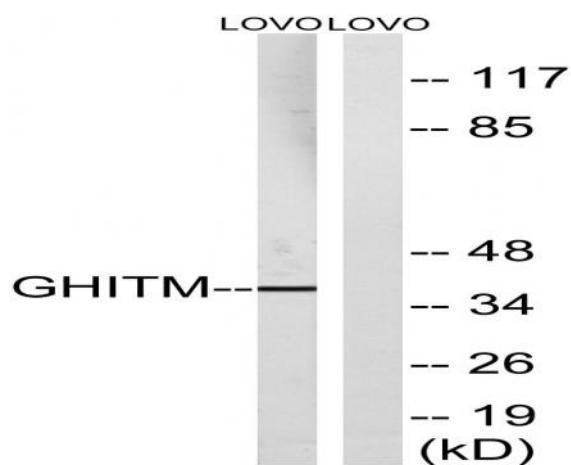


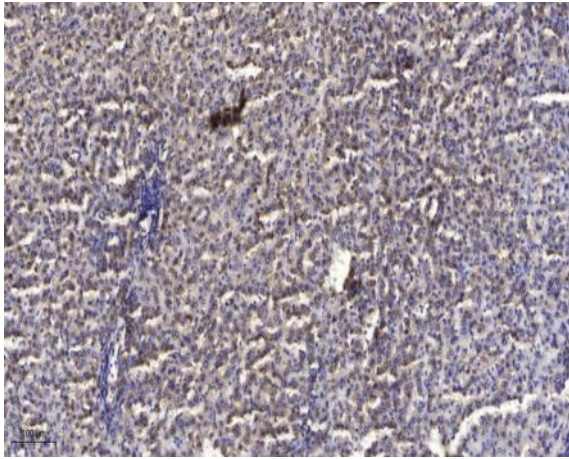
## GHITM Polyclonal Antibody

<b>Catalog No :</b>	YT1899
<b>Reactivity :</b>	Human;Rat;Mouse;
<b>Applications :</b>	WB;IHC;IF;ELISA
<b>Target :</b>	GHITM
<b>Gene Name :</b>	GHITM
<b>Protein Name :</b>	Growth hormone-inducible transmembrane protein
<b>Human Gene Id :</b>	27069
<b>Human Swiss Prot No :</b>	Q9H3K2
<b>Mouse Swiss Prot No :</b>	Q91VC9
<b>Immunogen :</b>	The antiserum was produced against synthesized peptide derived from human GHITM. AA range:31-80
<b>Specificity :</b>	GHITM Polyclonal Antibody detects endogenous levels of GHITM protein.
<b>Formulation :</b>	Liquid in PBS containing 50% glycerol, 0.5% BSA and 0.02% sodium azide.
<b>Source :</b>	Polyclonal, Rabbit,IgG
<b>Dilution :</b>	WB 1:500 - 1:2000. IHC 1:100 - 1:300. ELISA: 1:10000.. IF 1:50-200
<b>Purification :</b>	The antibody was affinity-purified from rabbit antiserum by affinity-chromatography using epitope-specific immunogen.
<b>Concentration :</b>	1 mg/ml
<b>Storage Stability :</b>	-15°C to -25°C/1 year(Do not lower than -25°C)
<b>Observed Band :</b>	37kD

<b>Background :</b>	similarity:Belongs to the BI1 family.,
<b>Function :</b>	similarity:Belongs to the BI1 family.,
<b>Subcellular Location :</b>	Mitochondrion inner membrane ; Multi-pass membrane protein .
<b>Expression :</b>	Blood,Brain,Fetal brain,Hair follicle dermal papilla,Kidney
<b>Sort :</b>	6576
<b>No4 :</b>	1
<b>Host :</b>	Rabbit
<b>Modifications :</b>	Unmodified

## Products Images





Immunohistochemical analysis of paraffin-embedded human liver cancer. 1, Antibody was diluted at 1:200(4° overnight). 2, Tris-EDTA,pH9.0 was used for antigen retrieval. 3,Secondary antibody was diluted at 1:200(room temperature, 45min).