

## GIMAP4 Polyclonal Antibody

<b>Catalog No :</b>	YT1904
<b>Reactivity :</b>	Human;Rat;Mouse;
<b>Applications :</b>	WB;IHC;IF;ELISA
<b>Target :</b>	GIMAP4
<b>Gene Name :</b>	GIMAP4
<b>Protein Name :</b>	GTPase IMAP family member 4
<b>Human Gene Id :</b>	55303
<b>Human Swiss Prot No :</b>	Q9NUV9
<b>Mouse Swiss Prot No :</b>	Q99JY3
<b>Immunogen :</b>	The antiserum was produced against synthesized peptide derived from human GIMAP4. AA range:131-180
<b>Specificity :</b>	GIMAP4 Polyclonal Antibody detects endogenous levels of GIMAP4 protein.
<b>Formulation :</b>	Liquid in PBS containing 50% glycerol, 0.5% BSA and 0.02% sodium azide.
<b>Source :</b>	Polyclonal, Rabbit,IgG
<b>Dilution :</b>	WB 1:500 - 1:2000. IHC 1:100 - 1:300. ELISA: 1:5000.. IF 1:50-200
<b>Purification :</b>	The antibody was affinity-purified from rabbit antiserum by affinity-chromatography using epitope-specific immunogen.
<b>Concentration :</b>	1 mg/ml
<b>Storage Stability :</b>	-15°C to -25°C/1 year(Do not lower than -25°C)
<b>Observed Band :</b>	38kD

**Background :** This gene encodes a protein belonging to the GTP-binding superfamily and to the immuno-associated nucleotide (IAN) subfamily of nucleotide-binding proteins. The encoded protein of this gene may be negatively regulated by T-cell acute lymphocytic leukemia 1 (TAL1). In humans, the IAN subfamily genes are located in a cluster at 7q36.1. [provided by RefSeq, Jul 2008],

**Function :** function:Exhibits intrinsic GTPase activity. Shows a higher affinity for GDP over GTP (about 12-fold higher), and binding shows an absolute requirement for magnesium.,similarity:Belongs to the IAN GTP-binding protein family.,tissue specificity:Highly expressed in spleen and peripheral blood leukocytes that contain mostly T- and B-lymphocytes. Expressed specifically in resting T- and B-lymphocytes and expression significantly decreases during B- or T-lymphocyte activation. Expressed at lower levels in thymus, ovary, colon and small intestine.,

**Subcellular Location :** Cytoplasm, cytosol .

**Expression :** Highly expressed in spleen and peripheral blood leukocytes that contain mostly T- and B-lymphocytes. Expressed specifically in resting T- and B-lymphocytes and expression significantly decreases during B- or T-lymphocyte activation. Expressed at lower levels in thymus, ovary, colon and small intestine.

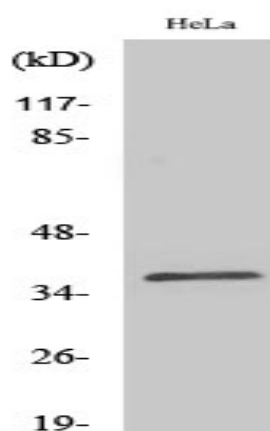
**Sort :** 6582

**No4 :** 1

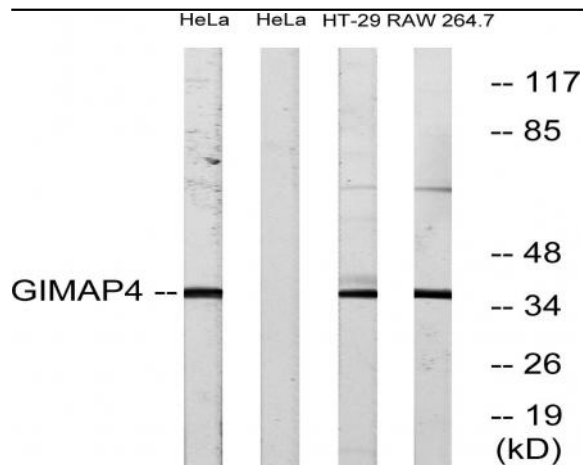
**Host :** Rabbit

**Modifications :** Unmodified

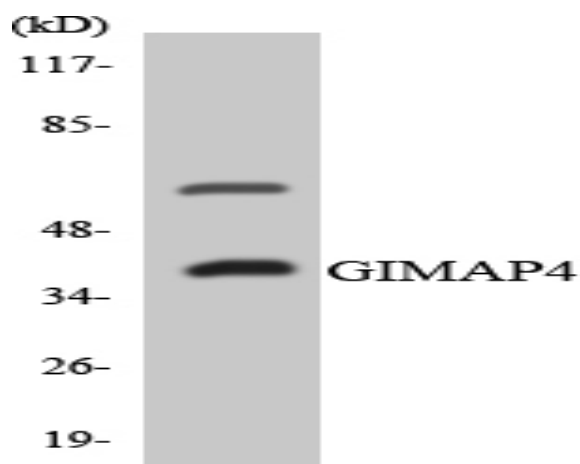
## Products Images



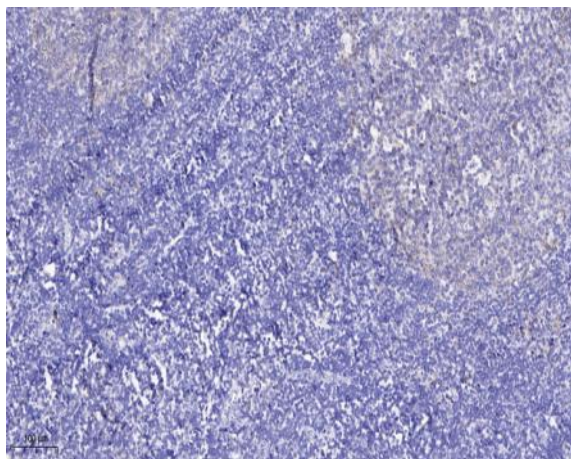
Western Blot analysis of various cells using GIMAP4 Polyclonal Antibody



Western blot analysis of lysates from HeLa, HT-29, and RAW264.7 cells, using GIMAP4 Antibody. The lane on the right is blocked with the synthesized peptide.



Western blot analysis of the lysates from COLO205 cells using GIMAP4 antibody.



Immunohistochemical analysis of paraffin-embedded human tonsil. 1, Antibody was diluted at 1:200(4° overnight). 2, Tris-EDTA,pH9.0 was used for antigen retrieval. 3,Secondary antibody was diluted at 1:200(room temperature, 45min).