

GIMAP5 Polyclonal Antibody

Catalog No :	YT1905
Reactivity :	Human;Rat;Mouse;
Applications :	WB;IHC;IF;ELISA
Target :	GIMAP5
Gene Name :	GIMAP5
Protein Name :	GTPase IMAP family member 5
Human Gene Id :	55340
Human Swiss Prot No :	Q96F15
Mouse Swiss Prot No :	Q8BWF2
Immunogen :	The antiserum was produced against synthesized peptide derived from human GIMAP5. AA range:231-280
Specificity :	GIMAP5 Polyclonal Antibody detects endogenous levels of GIMAP5 protein.
Formulation :	Liquid in PBS containing 50% glycerol, 0.5% BSA and 0.02% sodium azide.
Source :	Polyclonal, Rabbit,IgG
Dilution :	WB 1:500 - 1:2000. IHC 1:100 - 1:300. ELISA: 1:20000.. IF 1:50-200
Purification :	The antibody was affinity-purified from rabbit antiserum by affinity-chromatography using epitope-specific immunogen.
Concentration :	1 mg/ml
Storage Stability :	-15°C to -25°C/1 year(Do not lower than -25°C)
Observed Band :	35kD

Background : This gene encodes a protein belonging to the GTP-binding superfamily and to the immuno-associated nucleotide (IAN) subfamily of nucleotide-binding proteins. In humans, the IAN subfamily genes are located in a cluster at 7q36.1. This gene encodes an antiapoptotic protein that functions in T-cell survival. Polymorphisms in this gene are associated with systemic lupus erythematosus. Read-through transcription exists between this gene and the neighboring upstream GIMAP1 (GTPase, IMAP family member 1) gene. [provided by RefSeq, Dec 2010],

Function : function:Required for mitochondrial integrity and T-cell survival. May contribute to T-cell quiescence.,similarity:Belongs to the IAN GTP-binding protein family.,tissue specificity:Widely expressed with high levels in lymph node and spleen. High expression found in CD4 and CD8-positive T-cells and monocytes with very low levels in B-lymphocytes. Highly expressed in B-lymphocyte-derived neoplasms.,

Subcellular Location : Lysosome membrane ; Single-pass type IV membrane protein . Endosome, multivesicular body membrane ; Single-pass type IV membrane protein . Endosome membrane ; Single-pass type IV membrane protein . The mitochondrial localization originally reported was observed with C-terminally tagged protein and was not confirmed in later publications. .

Expression : Widely expressed with high levels in lymph node and spleen (PubMed:14724691). High expression found in T lymphocytes, including CD4 and CD8-positive T-cells, and monocytes (PubMed:14724691, PubMed:29382851). Very low expression levels in B-lymphocytes (PubMed:14724691).

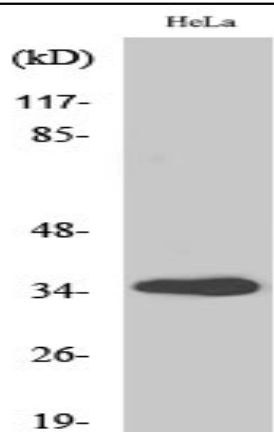
Sort : 6583

No4 : 1

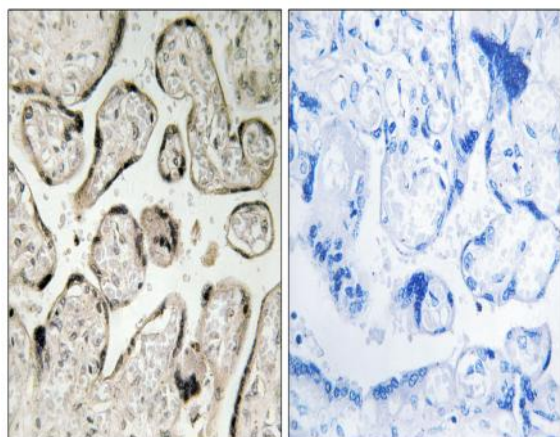
Host : Rabbit

Modifications : Unmodified

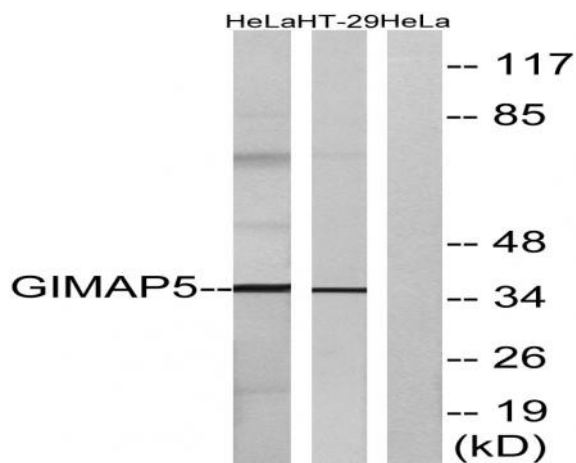
Products Images



Western Blot analysis of various cells using GIMAP5 Polyclonal Antibody



Immunohistochemistry analysis of paraffin-embedded human placenta tissue, using GIMAP5 Antibody. The picture on the right is blocked with the synthesized peptide.



Western blot analysis of lysates from HeLa and HT-29 cells, using GIMAP5 Antibody. The lane on the right is blocked with the synthesized peptide.