

## Glycogen Synthase 1 Polyclonal Antibody

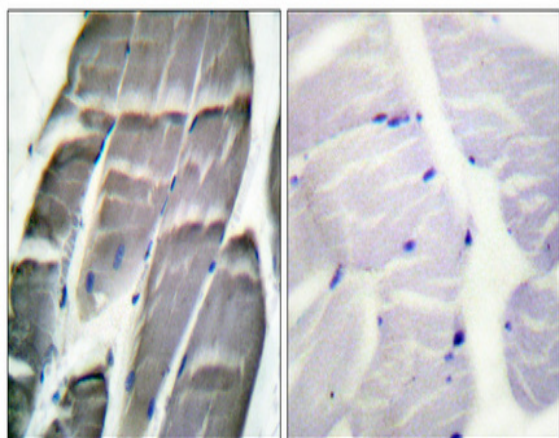
<b>Catalog No :</b>	YT1932
<b>Reactivity :</b>	Human;Mouse;Rat
<b>Applications :</b>	WB;IHC;IF;ELISA
<b>Target :</b>	Glycogen Synthase 1
<b>Fields :</b>	>>Starch and sucrose metabolism;>>Metabolic pathways;>>PI3K-Akt signaling pathway;>>AMPK signaling pathway;>>Insulin signaling pathway;>>Glucagon signaling pathway;>>Insulin resistance;>>Diabetic cardiomyopathy
<b>Gene Name :</b>	GYS1
<b>Protein Name :</b>	Glycogen [starch] synthase muscle
<b>Human Gene Id :</b>	2997
<b>Human Swiss Prot No :</b>	P13807
<b>Mouse Gene Id :</b>	14936
<b>Mouse Swiss Prot No :</b>	Q9Z1E4
<b>Rat Gene Id :</b>	690987
<b>Rat Swiss Prot No :</b>	A2RRU1
<b>Immunogen :</b>	The antiserum was produced against synthesized peptide derived from human Glycogen Synthase. AA range:621-670
<b>Specificity :</b>	Glycogen Synthase 1 Polyclonal Antibody detects endogenous levels of Glycogen Synthase 1 protein.
<b>Formulation :</b>	Liquid in PBS containing 50% glycerol, 0.5% BSA and 0.02% sodium azide.
<b>Source :</b>	Polyclonal, Rabbit,IgG

---

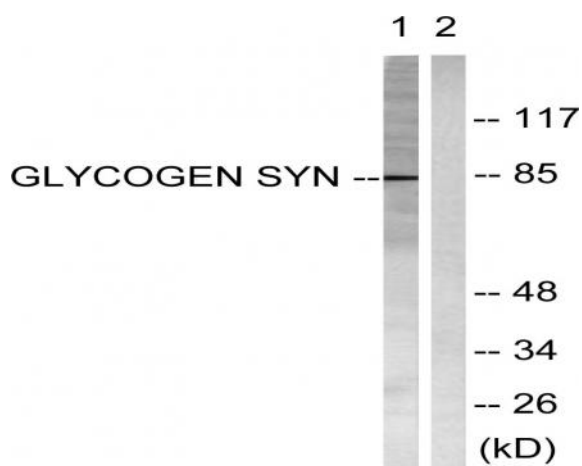
<b>Dilution :</b>	WB 1:500 - 1:2000. ELISA: 1:10000.. IF 1:50-200
<b>Purification :</b>	The antibody was affinity-purified from rabbit antiserum by affinity-chromatography using epitope-specific immunogen.
<b>Concentration :</b>	1 mg/ml
<b>Storage Stability :</b>	-15°C to -25°C/1 year(Do not lower than -25°C)
<b>Observed Band :</b>	85kD
<b>Cell Pathway :</b>	Starch and sucrose metabolism;Insulin_Receptor;
<b>Background :</b>	The protein encoded by this gene catalyzes the addition of glucose monomers to the growing glycogen molecule through the formation of alpha-1,4-glycoside linkages. Mutations in this gene are associated with muscle glycogen storage disease. Alternatively spliced transcript variants encoding different isoforms have been found for this gene.[provided by RefSeq, Sep 2009],
<b>Function :</b>	catalytic activity:UDP-glucose ((1->4)-alpha-D-glucosyl)(n) = UDP + ((1->4)-alpha-D-glucosyl)(n+1).,disease:Defects in GYS1 are the cause of muscle glycogen storage disease type 0 (GSD0b) [MIM:611556]; also called muscle glycogen synthase deficiency. GSD0 is a metabolic disorder characterized by fasting hypoglycemia presenting in infancy or early childhood. The role of muscle glycogen is to provide critical energy during bursts of activity and sustained muscle work.,enzyme regulation:Allosteric activation by glucose-6-phosphate. Phosphorylation reduces the activity towards UDP-glucose. When in the non-phosphorylated state, glycogen synthase does not require glucose-6-phosphate as an allosteric activator; when phosphorylated it does.,function:Transfers the glycosyl residue from UDP-Glc to the non-reducing end of alpha-1,4-glucan.,pathway:Glycan biosynthesis; glycogen biosynthesis.,similar
<b>Subcellular Location :</b>	cytosol,membrane,inclusion body,
<b>Expression :</b>	Endometrium,Heart,Kidney,Lymph,Muscle,Skin,
<b>Tag :</b>	orthogonal
<b>Sort :</b>	6654
<b>No4 :</b>	1
<b>Host :</b>	Rabbit
<b>Modifications :</b>	Unmodified

---

## Products Images



Immunohistochemical analysis of paraffin-embedded Human skeletal muscle. Antibody was diluted at 1:100(4° overnight). High-pressure and temperature Tris-EDTA,pH8.0 was used for antigen retrieval. Negative contrl (right) obtained from antibody was pre-absorbed by immunogen peptide.



Western blot analysis of lysates from HeLa cells, treated with Serum 20% 30', using Glycogen Synthase Antibody. The lane on the right is blocked with the synthesized peptide.