

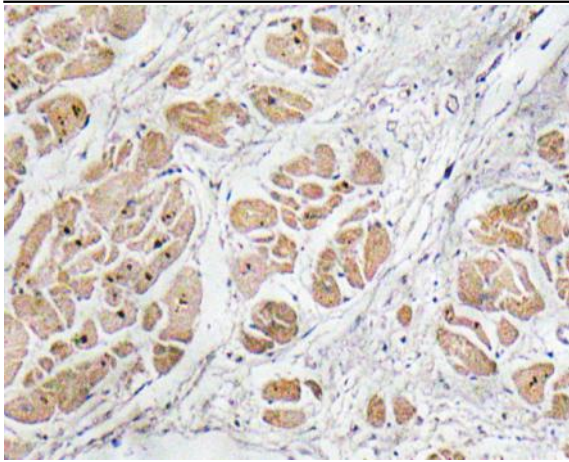
## GnRH I Polyclonal Antibody

<b>Catalog No :</b>	YT1940
<b>Reactivity :</b>	Human;Rat;Mouse;
<b>Applications :</b>	IHC;IF;ELISA
<b>Target :</b>	GNRH1
<b>Fields :</b>	>>Neuroactive ligand-receptor interaction;>>GnRH signaling pathway;>>GnRH secretion
<b>Gene Name :</b>	GNRH1
<b>Protein Name :</b>	Progonadoliberin-1
<b>Human Gene Id :</b>	2796
<b>Human Swiss Prot No :</b>	P01148
<b>Mouse Swiss Prot No :</b>	P13562
<b>Immunogen :</b>	The antiserum was produced against synthesized peptide derived from human GnRH I. AA range:43-92
<b>Specificity :</b>	GnRH I Polyclonal Antibody detects endogenous levels of GnRH I protein.
<b>Formulation :</b>	Liquid in PBS containing 50% glycerol, 0.5% BSA and 0.02% sodium azide.
<b>Source :</b>	Polyclonal, Rabbit,IgG
<b>Dilution :</b>	IHC 1:100 - 1:300. ELISA: 1:10000.. IF 1:50-200
<b>Purification :</b>	The antibody was affinity-purified from rabbit antiserum by affinity-chromatography using epitope-specific immunogen.
<b>Concentration :</b>	1 mg/ml
<b>Storage Stability :</b>	-15°C to -25°C/1 year(Do not lower than -25°C)

<b>Molecularweight :</b>	10kD
<b>Cell Pathway :</b>	GnRH;
<b>Background :</b>	gonadotropin releasing hormone 1 (GNRH1) Homo sapiens This gene encodes a preproprotein that is proteolytically processed to generate a peptide that is a member of the gonadotropin-releasing hormone (GnRH) family of peptides. Alternative splicing results in multiple transcript variants, at least one of which is secreted and then cleaved to generate gonadoliberin-1 and GnRH-associated peptide 1. Gonadoliberin-1 stimulates the release of luteinizing and follicle stimulating hormones, which are important for reproduction. Mutations in this gene are associated with hypogonadotropic hypogonadism. [provided by RefSeq, Nov 2015],
<b>Function :</b>	function:Stimulates the secretion of gonadotropins; it stimulates the secretion of both luteinizing and follicle-stimulating hormones.,online information:Gonadotropin-releasing hormone entry,pharmaceutical:Available under the names Factrel (Ayerst Labs), Lutrepulse or Lutrelef (Ferring Pharmaceuticals) and Relisorm (Serono). Used in evaluating hypothalamic-pituitary gonadotropic function.,similarity:Belongs to the GnRH family.,
<b>Subcellular Location :</b>	Secreted.
<b>Expression :</b>	Brain,
<b>Sort :</b>	6682
<b>No4 :</b>	1
<b>Host :</b>	Rabbit
<b>Modifications :</b>	Unmodified

---

## Products Images



Immunohistochemistry analysis of GnRH I antibody in paraffin-embedded human heart tissue.