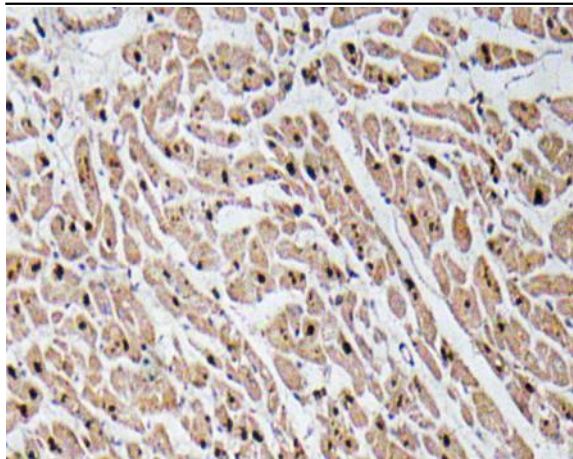


GRO γ Polyclonal Antibody

Catalog No :	YT2075
Reactivity :	Human;Rat;Mouse;
Applications :	IHC;IF;ELISA
Target :	GRO γ
Fields :	>>Cytokine-cytokine receptor interaction;>>Viral protein interaction with cytokine and cytokine receptor;>>Chemokine signaling pathway;>>NF-kappa B signaling pathway;>>NOD-like receptor signaling pathway;>>IL-17 signaling pathway;>>TNF signaling pathway;>>Alcoholic liver disease;>>Epithelial cell signaling in Helicobacter pylori infection;>>Legionellosis;>>Amoebiasis;>>Kaposi sarcoma-associated herpesvirus infection;>>Rheumatoid arthritis;>>Lipid and atherosclerosis
Gene Name :	CXCL3
Protein Name :	C-X-C motif chemokine 3
Human Gene Id :	2921
Human Swiss Prot No :	P19876
Mouse Swiss Prot No :	Q6W5C0
Immunogen :	The antiserum was produced against synthesized peptide derived from human GRO γ . AA range:58-107
Specificity :	GRO γ Polyclonal Antibody detects endogenous levels of GRO γ protein.
Formulation :	Liquid in PBS containing 50% glycerol, 0.5% BSA and 0.02% sodium azide.
Source :	Polyclonal, Rabbit,IgG
Dilution :	IHC 1:100 - 1:300. ELISA: 1:10000.. IF 1:50-200
Purification :	The antibody was affinity-purified from rabbit antiserum by affinity-chromatography using epitope-specific immunogen.

Concentration :	1 mg/ml
Storage Stability :	-15°C to -25°C/1 year(Do not lower than -25°C)
Molecularweight :	11kD
Cell Pathway :	Cytokine-cytokine receptor interaction;Chemokine;
Background :	This antimicrobial gene encodes a member of the CXC subfamily of chemokines. The encoded protein is a secreted growth factor that signals through the G-protein coupled receptor, CXC receptor 2. This protein plays a role in inflammation and as a chemoattractant for neutrophils. [provided by RefSeq, Sep 2014],
Function :	function:Ligand for CXCR2 (By similarity). Has chemotactic activity for neutrophils. May play a role in inflammation and exert its effects on endothelial cells in an autocrine fashion. In vitro, the processed form GRO-gamma(5-73) shows a fivefold higher chemotactic activity for neutrophilic granulocytes.,online information:CXCL3 entry,PTM:N-terminal processed form GRO-gamma(5-73) is produced by proteolytic cleavage after secretion from peripheral blood monocytes.,similarity:Belongs to the intercrine alpha (chemokine Cx) family.,
Subcellular Location :	Secreted.
Expression :	Histiocytic lymphoma,Lung,Peripheral blood monocyte,Placenta,
Tag :	orthogonal
Sort :	855
No4 :	1
Host :	Rabbit
Modifications :	Unmodified

Products Images



Immunohistochemistry analysis of GRO α antibody in paraffin-embedded human heart tissue.