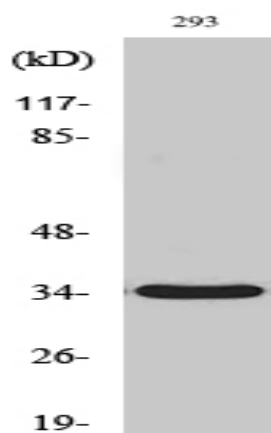


GRTP1 Polyclonal Antibody

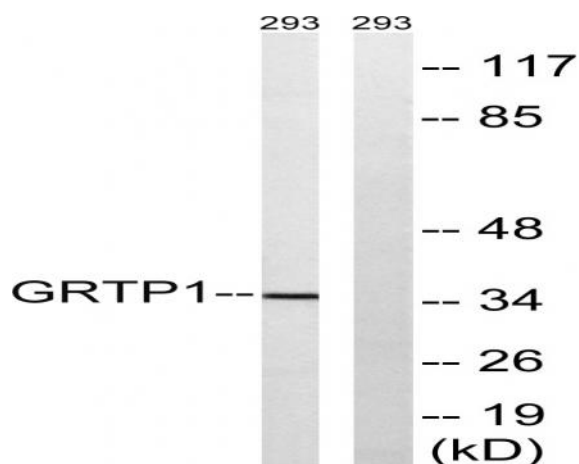
Catalog No :	YT2077
Reactivity :	Human;Rat;Mouse;
Applications :	WB;IHC;IF;ELISA
Target :	GRTP1
Gene Name :	GRTP1
Protein Name :	Growth hormone-regulated TBC protein 1
Human Gene Id :	79774
Human Swiss Prot No :	Q5TC63
Mouse Swiss Prot No :	Q9D3N8
Immunogen :	The antiserum was produced against synthesized peptide derived from human GRTP1. AA range:71-120
Specificity :	GRTP1 Polyclonal Antibody detects endogenous levels of GRTP1 protein.
Formulation :	Liquid in PBS containing 50% glycerol, 0.5% BSA and 0.02% sodium azide.
Source :	Polyclonal, Rabbit,IgG
Dilution :	WB 1:500 - 1:2000. IHC 1:100 - 1:300. ELISA: 1:40000.. IF 1:50-200
Purification :	The antibody was affinity-purified from rabbit antiserum by affinity-chromatography using epitope-specific immunogen.
Concentration :	1 mg/ml
Storage Stability :	-15°C to -25°C/1 year(Do not lower than -25°C)
Observed Band :	35kD

Background :	function:May act as a GTPase-activating protein for Rab family protein(s).,similarity:Contains 1 Rab-GAP TBC domain.,
Function :	function:May act as a GTPase-activating protein for Rab family protein(s).,similarity:Contains 1 Rab-GAP TBC domain.,
Subcellular Location :	intracellular,endomembrane system,
Expression :	Brain,Cervix carcinoma,Kidney epithelium,Ovary,Pancreas,Uterus,
Sort :	7154
No4 :	1
Host :	Rabbit
Modifications :	Unmodified

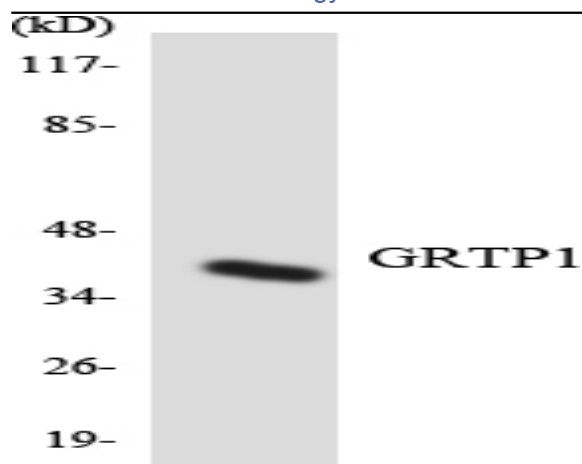
Products Images



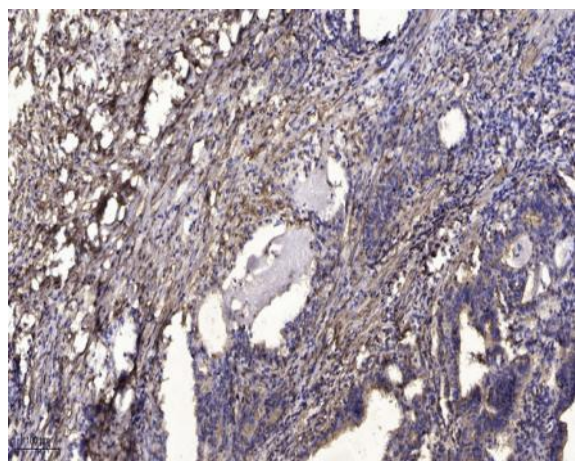
Western Blot analysis of various cells using GRTP1 Polyclonal Antibody



Western blot analysis of lysates from 293 cells, using GRTP1 Antibody. The lane on the right is blocked with the synthesized peptide.



Western blot analysis of the lysates from Jurkat cells using GRTP1 antibody.



Immunohistochemical analysis of paraffin-embedded human Gastric adenocarcinoma. 1, Antibody was diluted at 1:200(4° overnight). 2, Tris-EDTA,pH9.0 was used for antigen retrieval. 3,Secondary antibody was diluted at 1:200(room temperature, 45min).