

## GSK3 $\alpha$ / $\beta$ Polyclonal Antibody

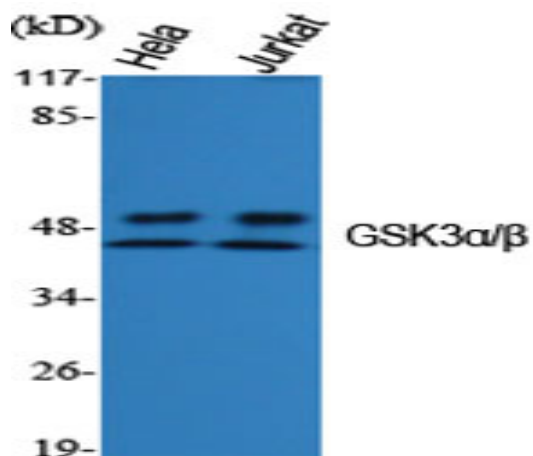
<b>Catalog No :</b>	YT2081
<b>Reactivity :</b>	Human;Mouse;Rat;Drosophila;Drosophila
<b>Applications :</b>	WB;IHC;IF;ELISA
<b>Target :</b>	GSK3 $\alpha$ / $\beta$
<b>Fields :</b>	>>Chemokine signaling pathway;>>Dopaminergic synapse;>>Non-alcoholic fatty liver disease;>>Shigellosis
<b>Gene Name :</b>	GSK3A/GSK3B
<b>Protein Name :</b>	Glycogen synthase kinase-3 alpha/beta
<b>Human Gene Id :</b>	2931
<b>Human Swiss Prot No :</b>	P49840/P49841
<b>Mouse Gene Id :</b>	606496/56637
<b>Rat Gene Id :</b>	50686/84027
<b>Rat Swiss Prot No :</b>	P18265/P18266
<b>Immunogen :</b>	The antiserum was produced against synthesized peptide derived from human GSK3 alpha/beta. AA range:246-295
<b>Specificity :</b>	GSK3 $\alpha$ / $\beta$ Polyclonal Antibody detects endogenous levels of GSK3 $\alpha$ / $\beta$ protein.
<b>Formulation :</b>	Liquid in PBS containing 50% glycerol, 0.5% BSA and 0.02% sodium azide.
<b>Source :</b>	Polyclonal, Rabbit,IgG
<b>Dilution :</b>	WB 1:500 - 1:2000. IHC 1:100 - 1:300. ELISA: 1:20000.. IF 1:50-200
<b>Purification :</b>	The antibody was affinity-purified from rabbit antiserum by affinity-chromatography using epitope-specific immunogen.

---

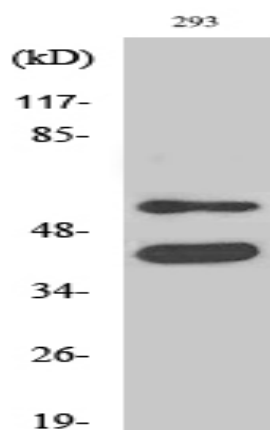
<b>Concentration :</b>	1 mg/ml
<b>Storage Stability :</b>	-15°C to -25°C/1 year(Do not lower than -25°C)
<b>Observed Band :</b>	51,46kD
<b>Cell Pathway :</b>	Chemokine;
<b>Background :</b>	glycogen synthase kinase 3 alpha(GSK3A) Homo sapiens This gene encodes a multifunctional Ser/Thr protein kinase that is implicated in the control of several regulatory proteins including glycogen synthase, and transcription factors, such as JUN. It also plays a role in the WNT and PI3K signaling pathways, as well as regulates the production of beta-amyloid peptides associated with Alzheimer's disease. [provided by RefSeq, Oct 2011],
<b>Function :</b>	catalytic activity:ATP + [tau protein] = ADP + [tau protein] phosphate.,function:Implicated in the hormonal control of several regulatory proteins including glycogen synthase, MYB and the transcription factor JUN.,similarity:Belongs to the protein kinase superfamily.,similarity:Belongs to the protein kinase superfamily. CMGC Ser/Thr protein kinase family. GSK-3 subfamily.,similarity:Contains 1 protein kinase domain.,subunit:Monomer.,
<b>Subcellular Location :</b>	mitochondrion,cytosol,beta-catenin destruction complex,postsynapse,
<b>Expression :</b>	Brain,Eye,Foreskin,Lung,Pancreas,Platelet,Testis,
<b>Tag :</b>	orthogonal,hot
<b>Sort :</b>	7166
<b>No4 :</b>	1
<b>Host :</b>	Rabbit
<b>Modifications :</b>	Unmodified

---

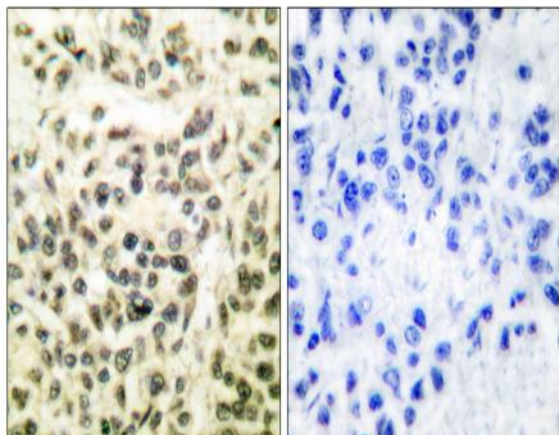
## Products Images



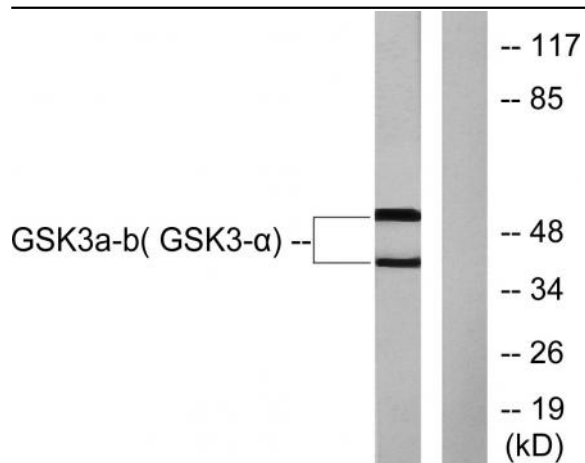
Western Blot analysis of various cells using GSK3α/β Polyclonal Antibody diluted at 1:1000



Western Blot analysis of 293 cells using GSK3α/β Polyclonal Antibody diluted at 1:1000



Immunohistochemistry analysis of paraffin-embedded human breast carcinoma tissue, using GSK3 alpha/beta Antibody. The picture on the right is blocked with the synthesized peptide.



Western blot analysis of lysates from 293 cells, treated with TNF- $\alpha$  20ng/ml 30', using GSK3 alpha/beta Antibody. The lane on the right is blocked with the synthesized peptide.