

GTPBP5 Polyclonal Antibody

Catalog No :	YT2087
Reactivity :	Human;Mouse;Rat
Applications :	IHC;IF;ELISA
Target :	GTPBP5
Gene Name :	GTPBP5
Protein Name :	GTP-binding protein 5
Human Gene Id :	26164
Human Swiss Prot No :	Q9H4K7
Immunogen :	The antiserum was produced against synthesized peptide derived from human GTPBP5. AA range:71-120
Specificity :	GTPBP5 Polyclonal Antibody detects endogenous levels of GTPBP5 protein.
Formulation :	Liquid in PBS containing 50% glycerol, 0.5% BSA and 0.02% sodium azide.
Source :	Polyclonal, Rabbit,IgG
Dilution :	IHC 1:100 - 1:300. ELISA: 1:20000.. IF 1:50-200
Purification :	The antibody was affinity-purified from rabbit antiserum by affinity-chromatography using epitope-specific immunogen.
Concentration :	1 mg/ml
Storage Stability :	-15°C to -25°C/1 year(Do not lower than -25°C)
Molecularweight :	44kD
Background :	Small G proteins, such as GTPBP5, act as molecular switches that play crucial roles in the regulation of fundamental cellular processes such as protein

synthesis, nuclear transport, membrane trafficking, and signal transduction (Hirano et al., 2006 [PubMed 17054726]).[supplied by OMIM, Mar 2008],

Function : function:Involved in the ribosome maturation process. Plays a role of GTPase in vitro. When missing, mitochondria elongation and abnormal nuclear morphology are observed.,sequence caution:Translated as Gln.,similarity:Belongs to the GTP1/OBG family.,

Subcellular Location : Mitochondrion. Mitochondrion inner membrane; Peripheral membrane protein; Matrix side.

Expression : Muscle,Testis,

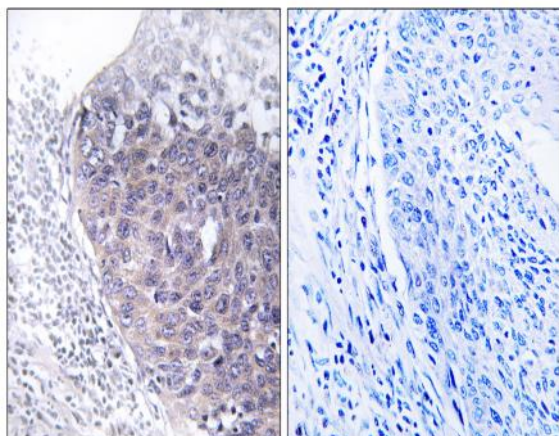
Sort : 7195

No4 : 1

Host : Rabbit

Modifications : Unmodified

Products Images



Immunohistochemistry analysis of paraffin-embedded human cervix carcinoma tissue, using GTPBP5 Antibody. The picture on the right is blocked with the synthesized peptide.