

GUF1 Polyclonal Antibody

Catalog No :	YT2088
Reactivity :	Human;Mouse
Applications :	IHC;IF;ELISA
Target :	GUF1
Gene Name :	GUF1
Protein Name :	Translation factor GUF1 mitochondrial
Human Gene Id :	60558
Human Swiss Prot No :	Q8N442
Mouse Swiss Prot No :	Q8C3X4
Immunogen :	The antiserum was produced against synthesized peptide derived from human GUF1. AA range:421-470
Specificity :	GUF1 Polyclonal Antibody detects endogenous levels of GUF1 protein.
Formulation :	Liquid in PBS containing 50% glycerol, 0.5% BSA and 0.02% sodium azide.
Source :	Polyclonal, Rabbit,IgG
Dilution :	IHC 1:100 - 1:300. ELISA: 1:20000.. IF 1:50-200
Purification :	The antibody was affinity-purified from rabbit antiserum by affinity-chromatography using epitope-specific immunogen.
Concentration :	1 mg/ml
Storage Stability :	-15°C to -25°C/1 year(Do not lower than -25°C)
Molecularweight :	74kD

Background : This gene encodes a GTPase that triggers back-translocation of the elongating ribosome during mitochondrial protein synthesis. The protein contains a highly conserved C-terminal domain not found in other GTPases that facilitates tRNA binding. The encoded protein is thought to prevent misincorporation of amino acids in stressful, suboptimal conditions. An allelic variant in this gene has been associated with early infantile epileptic encephalopathy-40. Alternative splicing results in multiple transcript variants. [provided by RefSeq, Sep 2016],

Function : similarity:Belongs to the GTP-binding elongation factor family. LepA subfamily.,

Subcellular Location : Mitochondrion inner membrane ; Peripheral membrane protein ; Matrix side .

Expression : Brain,Colon,Lung adenocarcinoma,Teratocarcinoma,

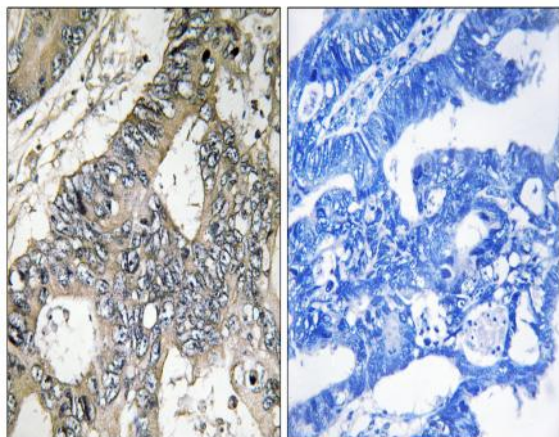
Sort : 7199

No4 : 1

Host : Rabbit

Modifications : Unmodified

Products Images



Immunohistochemistry analysis of paraffin-embedded human colon carcinoma tissue, using GUF1 Antibody. The picture on the right is blocked with the synthesized peptide.