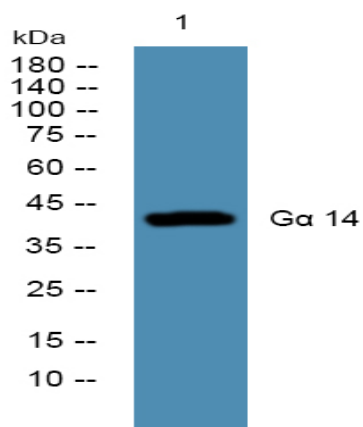


Gα 14 Polyclonal Antibody

Catalog No :	YT2091
Reactivity :	Human;Mouse;Rat
Applications :	WB;ELISA
Target :	Gα 14
Fields :	>>Calcium signaling pathway;>>Chagas disease;>>Amoebiasis
Gene Name :	GNA14
Protein Name :	Guanine nucleotide-binding protein subunit alpha-14
Human Gene Id :	9630
Human Swiss Prot No :	O95837
Mouse Gene Id :	14675
Mouse Swiss Prot No :	P30677
Immunogen :	The antiserum was produced against synthesized peptide derived from human GNA14. AA range:1-50
Specificity :	Gα 14 Polyclonal Antibody detects endogenous levels of Gα 14 protein.
Formulation :	Liquid in PBS containing 50% glycerol, 0.5% BSA and 0.02% sodium azide.
Source :	Polyclonal, Rabbit,IgG
Dilution :	WB 1:500 - 1:2000. ELISA: 1:40000. Not yet tested in other applications.
Purification :	The antibody was affinity-purified from rabbit antiserum by affinity-chromatography using epitope-specific immunogen.
Concentration :	1 mg/ml

Storage Stability :	<u>-15°C to -25°C/1 year(Do not lower than -25°C)</u>
Observed Band :	<u>42kD</u>
Cell Pathway :	<u>AMPK</u>
Background :	<u>This gene encodes a member of the guanine nucleotide-binding, or G protein family. G proteins are heterotrimers consisting of alpha, beta and gamma subunits. The encoded protein is a member of the alpha family of G proteins, more specifically the alpha q subfamily of G proteins. The encoded protein may play a role in pertussis-toxin resistant activation of phospholipase C-beta and its downstream effectors.[provided by RefSeq, Feb 2009],</u>
Function :	<u>function:Guanine nucleotide-binding proteins (G proteins) are involved as modulators or transducers in various transmembrane signaling systems.,similarity:Belongs to the G-alpha family. G(q) subfamily.,subunit:G proteins are composed of 3 units; alpha, beta and gamma. The alpha chain contains the guanine nucleotide binding site.,</u>
Subcellular Location :	<u>heterotrimeric G-protein complex,plasma membrane,extracellular exosome,</u>
Expression :	<u>Caudate nucleus,Pancreas,Spleen,</u>
Sort :	<u>7202</u>
No4 :	<u>1</u>
Host :	<u>Rabbit</u>
Modifications :	<u>Unmodified</u>

Products Images



Western blot analysis of lysates from KB cells, primary antibody was diluted at 1:1000, 4° over night