

## HLA-H Polyclonal Antibody

<b>Catalog No :</b>	YT2180
<b>Reactivity :</b>	Human
<b>Applications :</b>	WB;ELISA
<b>Target :</b>	HLA-H
<b>Gene Name :</b>	HLA-H
<b>Protein Name :</b>	Putative HLA class I histocompatibility antigen alpha chain H
<b>Human Gene Id :</b>	3136
<b>Human Swiss Prot No :</b>	P01893
<b>Immunogen :</b>	The antiserum was produced against synthesized peptide derived from human HLAH. AA range:71-120
<b>Specificity :</b>	HLA-H Polyclonal Antibody detects endogenous levels of HLA-H protein.
<b>Formulation :</b>	Liquid in PBS containing 50% glycerol, 0.5% BSA and 0.02% sodium azide.
<b>Source :</b>	Polyclonal, Rabbit,IgG
<b>Dilution :</b>	WB 1:500 - 1:2000. ELISA: 1:10000. Not yet tested in other applications.
<b>Purification :</b>	The antibody was affinity-purified from rabbit antiserum by affinity-chromatography using epitope-specific immunogen.
<b>Concentration :</b>	1 mg/ml
<b>Storage Stability :</b>	-15°C to -25°C/1 year(Do not lower than -25°C)
<b>Observed Band :</b>	40kD
<b>Background :</b>	This major histocompatibility complex gene represents a transcribed pseudogene, possibly derived from HLA-A. This gene displays extensive

variation. [provided by RefSeq, May 2010],

**Function :**

caution:Could be the product of a pseudogene.,function:Involved in the presentation of foreign antigens to the immune system.,similarity:Belongs to the MHC class I family.,similarity:Contains 1 Ig-like C1-type (immunoglobulin-like) domain.,subunit:Heterodimer of an alpha chain and a beta chain (beta-2-microglobulin).,

**Subcellular Location :**

Cell membrane ; Single-pass membrane protein .

**Expression :**

Platelet,

**Sort :**

7680

**No4 :**

1

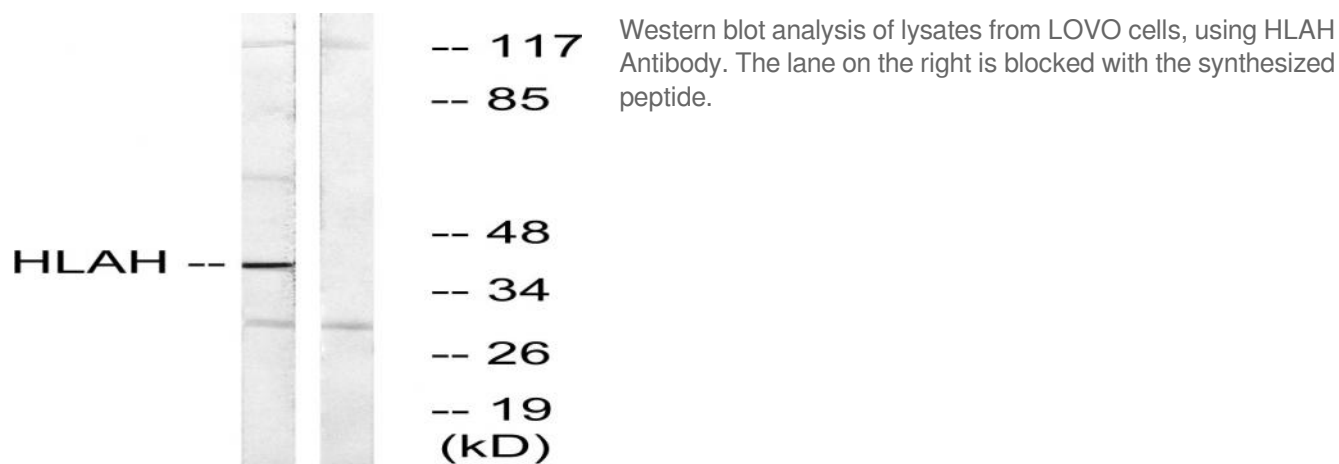
**Host :**

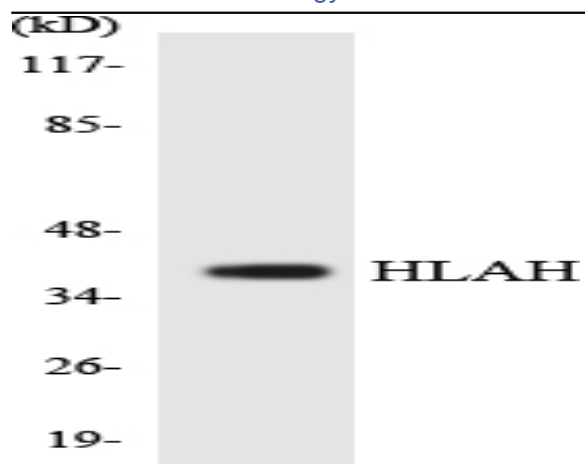
Rabbit

**Modifications :**

Unmodified

## Products Images





Western blot analysis of the lysates from HT-29 cells using HLAH antibody.