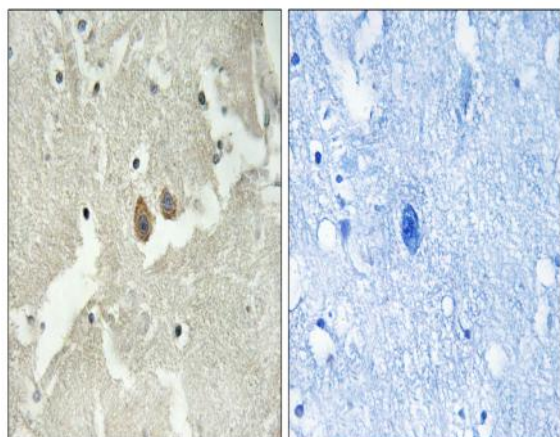


HMP19 Polyclonal Antibody

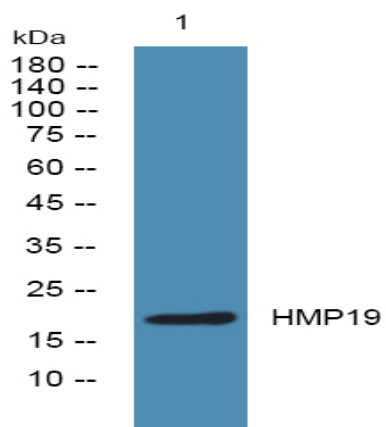
Catalog No :	YT2188
Reactivity :	Human;Mouse
Applications :	IHC;IF;WB;ELISA
Target :	HMP19
Gene Name :	NSG2
Protein Name :	Neuron-specific protein family member 2
Human Gene Id :	51617
Human Swiss Prot No :	Q9Y328
Mouse Gene Id :	18197
Mouse Swiss Prot No :	P47759
Immunogen :	The antiserum was produced against synthesized peptide derived from human NSG2. AA range:33-82
Specificity :	HMP19 Polyclonal Antibody detects endogenous levels of HMP19 protein.
Formulation :	Liquid in PBS containing 50% glycerol, 0.5% BSA and 0.02% sodium azide.
Source :	Polyclonal, Rabbit,IgG
Dilution :	WB 1:500-2000 IHC 1:100 - 1:300. ELISA: 1:20000.. IF 1:50-200
Purification :	The antibody was affinity-purified from rabbit antiserum by affinity-chromatography using epitope-specific immunogen.
Concentration :	1 mg/ml
Storage Stability :	-15°C to -25°C/1 year(Do not lower than -25°C)

Observed Band :	19kD
Background :	similarity:Belongs to the NSG family.,subcellular location:Mainly Golgi stack, but also found in small vacuolar organelles and multivesicular bodies.,
Function :	similarity:Belongs to the NSG family.,subcellular location:Mainly Golgi stack, but also found in small vacuolar organelles and multivesicular bodies.,
Subcellular Location :	Membrane ; Single-pass type II membrane protein . Golgi apparatus, trans-Golgi network membrane . Cell projection, dendrite . Endosome membrane . Early endosome membrane . Late endosome membrane . Lysosome lumen . Cytoplasmic vesicle membrane . Golgi apparatus, Golgi stack membrane . Endosome, multivesicular body membrane . Endocytosed from the cell surface, thus entered into early endosomes, trafficks to late endosomes and degradates in lysosomes (By similarity). Mainly Golgi stack, but also found in small vacuolar organelles and multivesicular bodies. Found in both stationary and motile endosomes (By similarity). .
Expression :	Brain,Hypothalamus,
Sort :	7703
No4 :	1
Host :	Rabbit
Modifications :	Unmodified

Products Images



Immunohistochemistry analysis of paraffin-embedded human brain tissue, using NSG2 Antibody. The picture on the right is blocked with the synthesized peptide.



Western blot analysis of lysates from DU145 cells, primary antibody was diluted at 1:1000, 4° over night