

HoxA6 Polyclonal Antibody

Catalog No :	YT2212
Reactivity :	Human;Mouse
Applications :	WB;ELISA
Target :	HoxA6
Gene Name :	HOXA6
Protein Name :	Homeobox protein Hox-A6
Human Gene Id :	3203
Human Swiss Prot No :	P31267
Mouse Swiss Prot No :	P09092
Immunogen :	The antiserum was produced against synthesized peptide derived from human HOXA6. AA range:101-150
Specificity :	HoxA6 Polyclonal Antibody detects endogenous levels of HoxA6 protein.
Formulation :	Liquid in PBS containing 50% glycerol, 0.5% BSA and 0.02% sodium azide.
Source :	Polyclonal, Rabbit,IgG
Dilution :	WB 1:500 - 1:2000. ELISA: 1:40000. Not yet tested in other applications.
Purification :	The antibody was affinity-purified from rabbit antiserum by affinity-chromatography using epitope-specific immunogen.
Concentration :	1 mg/ml
Storage Stability :	-15°C to -25°C/1 year(Do not lower than -25°C)
Observed Band :	26kD

Background : In vertebrates, the genes encoding the class of transcription factors called homeobox genes are found in clusters named A, B, C, and D on four separate chromosomes. Expression of these proteins is spatially and temporally regulated during embryonic development. This gene is part of the A cluster on chromosome 7 and encodes a DNA-binding transcription factor which may regulate gene expression, morphogenesis, and differentiation. [provided by RefSeq, Jul 2008],

Function : function:Sequence-specific transcription factor which is part of a developmental regulatory system that provides cells with specific positional identities on the anterior-posterior axis.,similarity:Belongs to the Antp homeobox family.,similarity:Contains 1 homeobox DNA-binding domain.,

Subcellular Location : Nucleus.

Tag : orthogonal

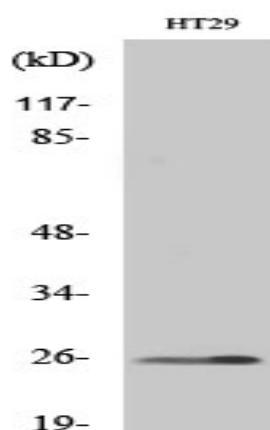
Sort : 941

No4 : 1

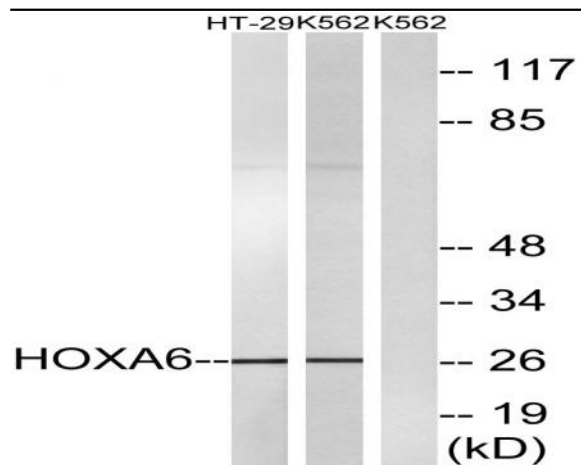
Host : Rabbit

Modifications : Unmodified

Products Images



Western Blot analysis of various cells using HoxA6 Polyclonal Antibody diluted at 1:1000 cells nucleus extracted by Minute TM Cytoplasmic and Nuclear Fractionation kit (SC-003, Inventbiotech, MN, USA).



Western blot analysis of lysates from HT-29 and K562 cells, using HOXA6 Antibody. The lane on the right is blocked with the synthesized peptide.