

## Hox-C6 Polyclonal Antibody

|                              |   |
|------------------------------|---|
| <b>Catalog No :</b>          | YT2218  |
| <b>Reactivity :</b>          | Human;Mouse   |
| <b>Applications :</b>        | WB;IHC;IF;ELISA   |
| <b>Target :</b>              | Hox-C6  |
| <b>Gene Name :</b>           | HOXC6   |
| <b>Protein Name :</b>        | Homeobox protein Hox-C6   |
| <b>Human Gene Id :</b>       | 3223  |
| <b>Human Swiss Prot No :</b> | P09630  |
| <b>Mouse Gene Id :</b>       | 15425   |
| <b>Mouse Swiss Prot No :</b> | P10629  |
| <b>Immunogen :</b>           | The antiserum was produced against synthesized peptide derived from human HOXC6. AA range:186-235                     |
| <b>Specificity :</b>         | Hox-C6 Polyclonal Antibody detects endogenous levels of Hox-C6 protein.   |
| <b>Formulation :</b>         | Liquid in PBS containing 50% glycerol, 0.5% BSA and 0.02% sodium azide.   |
| <b>Source :</b>              | Polyclonal, Rabbit,IgG  |
| <b>Dilution :</b>            | WB 1:500 - 1:2000. IHC 1:100 - 1:300. IF 1:200 - 1:1000. ELISA: 1:10000. Not yet tested in other applications.        |
| <b>Purification :</b>        | The antibody was affinity-purified from rabbit antiserum by affinity-chromatography using epitope-specific immunogen. |
| <b>Concentration :</b>       | 1 mg/ml   |
| <b>Storage Stability :</b>   | -15°C to -25°C/1 year(Do not lower than -25°C)  |

**Observed Band :** 26kD**Background :**

This gene belongs to the homeobox family, members of which encode a highly conserved family of transcription factors that play an important role in morphogenesis in all multicellular organisms. Mammals possess four similar homeobox gene clusters, HOXA, HOXB, HOXC and HOXD, which are located on different chromosomes and consist of 9 to 11 genes arranged in tandem. This gene, HOXC6, is one of several HOXC genes located in a cluster on chromosome 12. Three genes, HOXC5, HOXC4 and HOXC6, share a 5' non-coding exon. Transcripts may include the shared exon spliced to the gene-specific exons, or they may include only the gene-specific exons. Alternatively spliced transcript variants encoding different isoforms have been identified for HOXC6. Transcript variant two includes the shared exon, and transcript variant one includes only gene-specific exons. [provided by RefSeq, Jul 2008],

---

**Function :**

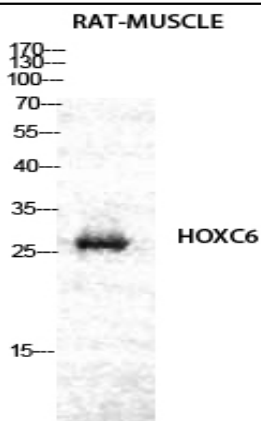
function:Sequence-specific transcription factor which is part of a developmental regulatory system that provides cells with specific positional identities on the anterior-posterior axis.,similarity:Belongs to the Antp homeobox family.,similarity:Contains 1 homeobox DNA-binding domain.,

---

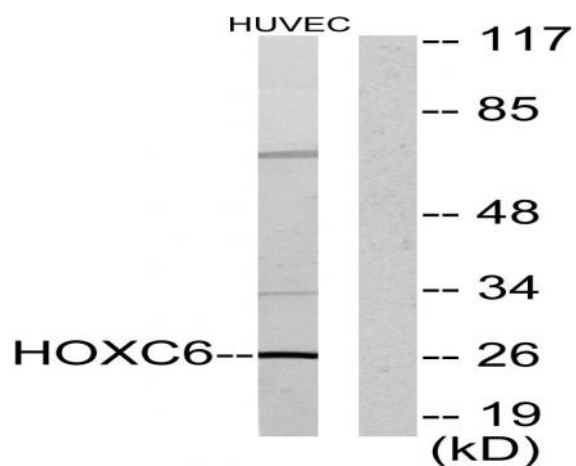
**Subcellular Location :** Nucleus.**Expression :** Lung,**Sort :** 7749**No4 :** 1**Host :** Rabbit**Modifications :** Unmodified

---

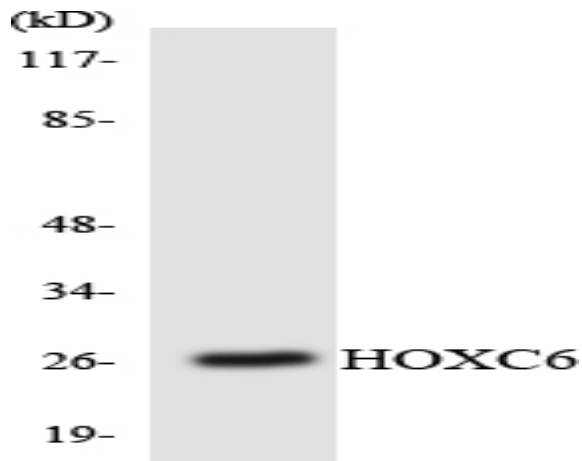
## Products Images



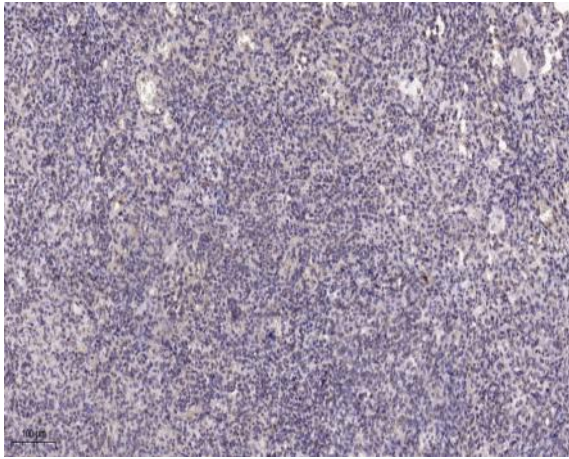
Western Blot analysis of RAT-MUSCLE cells using Hox-C6 Polyclonal Antibody diluted at 1:2000 cells nucleus extracted by Minute TM Cytoplasmic and Nuclear Fractionation kit (SC-003, Inventbiotech, MN, USA).



Western blot analysis of lysates from HUVEC cells, using HOXC6 Antibody. The lane on the right is blocked with the synthesized peptide.



Western blot analysis of the lysates from Jurkat cells using HOXC6 antibody.



Immunohistochemical analysis of paraffin-embedded human spleen. 1, Tris-EDTA, pH 9.0 was used for antigen retrieval. 2 Antibody was diluted at 1:200 (4° overnight). 3, Secondary antibody was diluted at 1:200 (room temperature, 45 min).