

## HoxD12 Polyclonal Antibody

<b>Catalog No :</b>	YT2220
<b>Reactivity :</b>	Human;Mouse
<b>Applications :</b>	WB;IHC;IF;ELISA
<b>Target :</b>	HoxD12
<b>Gene Name :</b>	HOXD12
<b>Protein Name :</b>	Homeobox protein Hox-D12
<b>Human Gene Id :</b>	3238
<b>Human Swiss Prot No :</b>	P35452
<b>Mouse Gene Id :</b>	15432
<b>Mouse Swiss Prot No :</b>	P23812
<b>Immunogen :</b>	The antiserum was produced against synthesized peptide derived from human HOXD12. AA range:191-240
<b>Specificity :</b>	HoxD12 Polyclonal Antibody detects endogenous levels of HoxD12 protein.
<b>Formulation :</b>	Liquid in PBS containing 50% glycerol, 0.5% BSA and 0.02% sodium azide.
<b>Source :</b>	Polyclonal, Rabbit,IgG
<b>Dilution :</b>	WB 1:500 - 1:2000. IHC 1:100 - 1:300. ELISA: 1:20000.. IF 1:50-200
<b>Purification :</b>	The antibody was affinity-purified from rabbit antiserum by affinity-chromatography using epitope-specific immunogen.
<b>Concentration :</b>	1 mg/ml
<b>Storage Stability :</b>	-15°C to -25°C/1 year(Do not lower than -25°C)

**Observed Band :** 28kD

---

**Background :** This gene belongs to the homeobox family of genes. The homeobox genes encode a highly conserved family of transcription factors that play an important role in morphogenesis in all multicellular organisms. Mammals possess four similar homeobox gene clusters, HOXA, HOXB, HOXC and HOXD, located on different chromosomes, consisting of 9 to 11 genes arranged in tandem. This gene is one of several homeobox HOXD genes located in a cluster on chromosome 2. Deletions that remove the entire HOXD gene cluster or the 5' end of this cluster have been associated with severe limb and genital abnormalities. The exact role of this gene has not been determined. [provided by RefSeq, Jul 2008],

---

**Function :** function:Sequence-specific transcription factor which is part of a developmental regulatory system that provides cells with specific positional identities on the anterior-posterior axis.,similarity:Belongs to the Abd-B homeobox family.,similarity:Contains 1 homeobox DNA-binding domain.,

---

**Subcellular Location :** Nucleus.

---

**Expression :** PCR rescued clones,

---

**Tag :** orthogonal

---

**Sort :** 7751

---

**No4 :** 1

---

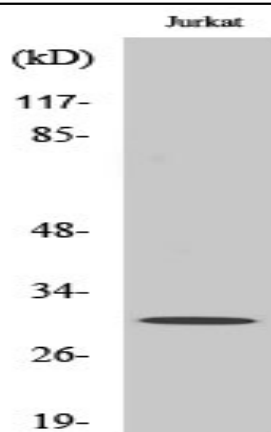
**Host :** Rabbit

---

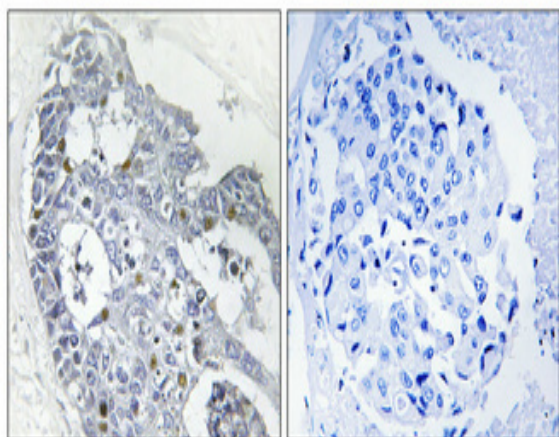
**Modifications :** Unmodified

---

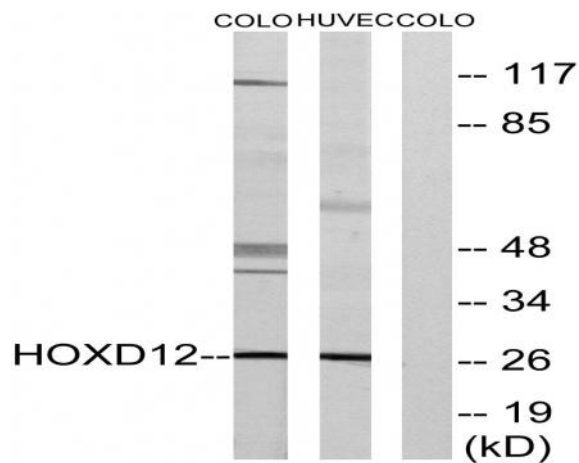
## Products Images



Western Blot analysis of various cells using HoxD12 Polyclonal Antibody cells nucleus extracted by Minute TM Cytoplasmic and Nuclear Fractionation kit (SC-003, Inventbiotech, MN, USA).



Immunohistochemical analysis of paraffin-embedded Human breast cancer. Antibody was diluted at 1:100 (4° overnight). High-pressure and temperature Tris-EDTA, pH 8.0 was used for antigen retrieval. Negative control (right) obtained from antibody was pre-absorbed by immunogen peptide.



Western blot analysis of lysates from COLO205 and HucEc cells, treated with serum 20% 15', using HOXD12 Antibody. The lane on the right is blocked with the synthesized peptide.