

HP-1 γ mouse Monoclonal Antibody(3B9)

Catalog No :	YM3742
Reactivity :	Human;Mouse;Rat
Applications :	WB;IHC;IF
Target :	HP1 γ
Fields :	>>Shigellosis
Gene Name :	CBX3
Protein Name :	Chromobox protein homolog 3 (HECH) (Heterochromatin protein 1 homolog gamma) (HP1 gamma) (Modifier 2 protein)
Human Gene Id :	11335
Human Swiss Prot No :	Q13185
Mouse Swiss Prot No :	P23198
Immunogen :	Recombinant Protein of HP-1 γ
Specificity :	The antibody detects endogenous HP-1 γ protein
Formulation :	Liquid in PBS containing 50% glycerol, 0.5% BSA and 0.02% sodium azide.
Source :	Monoclonal, Mouse
Dilution :	WB 1:500-2000,IHC 1:50-300. IF 1:50-200
Purification :	The antibody was affinity-purified from mouse antiserum by affinity-chromatography using epitope-specific immunogen.
Concentration :	1 mg/ml
Storage Stability :	-15°C to -25°C/1 year(Do not lower than -25°C)

Observed Band : 24kD

Background : At the nuclear envelope, the nuclear lamina and heterochromatin are adjacent to the inner nuclear membrane. The protein encoded by this gene binds DNA and is a component of heterochromatin. This protein also can bind lamin B receptor, an integral membrane protein found in the inner nuclear membrane. The dual binding functions of the encoded protein may explain the association of heterochromatin with the inner nuclear membrane. This protein binds histone H3 tails methylated at Lys-9 sites. This protein is also recruited to sites of ultraviolet-induced DNA damage and double-strand breaks. Two transcript variants encoding the same protein but differing in the 5' UTR, have been found for this gene.[provided by RefSeq, Mar 2011],

Function : function:Seems to be involved in transcriptional silencing in heterochromatin-like complexes. Recognizes and binds histone H3 tails methylated at 'Lys-9', leading to epigenetic repression. May contribute to the association of the heterochromatin with the inner nuclear membrane through its interaction with lamin B receptor (LBR). Involved in the formation of functional kinetochore through interaction with MIS12 complex proteins.,PTM:Phosphorylated by PIM1. Phosphorylated during interphase and possibly hyper-phosphorylated during mitosis.,similarity:Contains 2 chromo domains.,subcellular location:Associates with euchromatin and is largely excluded from constitutive heterochromatin. May be associated with microtubules and mitotic poles during mitosis.,subunit:Binds directly to CHAF1A. Interacts with histone H3 methylated at 'Lys-9'. Part of the E2F6.com-1 complex in G0 phase composed of E2F

Subcellular Location : Nucleus . Associates with euchromatin and is largely excluded from constitutive heterochromatin. May be associated with microtubules and mitotic poles during mitosis (Potential). .

Expression : Bone marrow,Brain,Cajal-Retzius cell,Epithelium,Liver,Placenta,

Tag : orthogonal

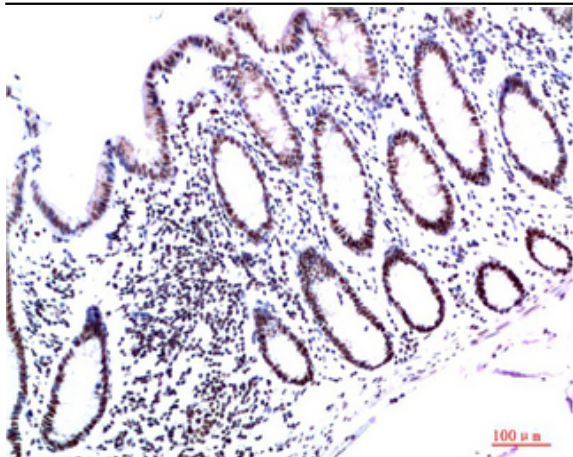
Sort : 7766

No4 : 1

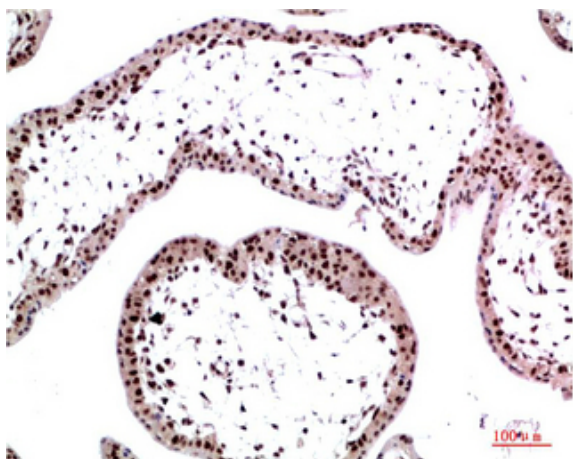
Host : Mouse

Modifications : Unmodified

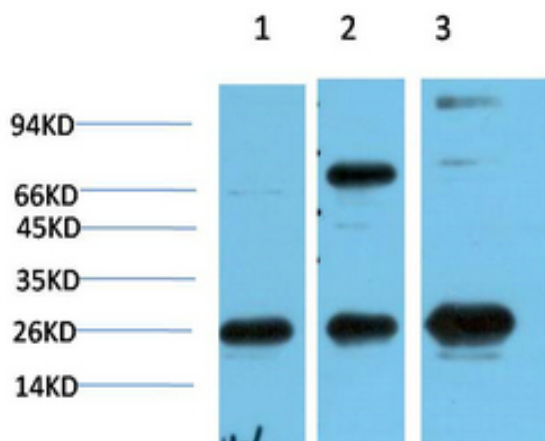
Products Images



Immunohistochemical analysis of paraffin-embedded Human Colon Carcinoma Tissue using HP-1 γ Mouse mAb diluted at 1:200



Immunohistochemical analysis of paraffin-embedded Human Placenta Tissue using HP-1 γ Mouse mAb diluted at 1:200



Western blot analysis of 1) Hela Cell Lysate, 2) 3T3 Cell Lysate, 3) PC12 Cell Lysate using HP-1 γ Mouse mAb diluted at 1:1000.