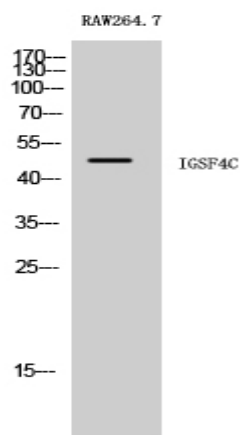


IGSF4C Polyclonal Antibody

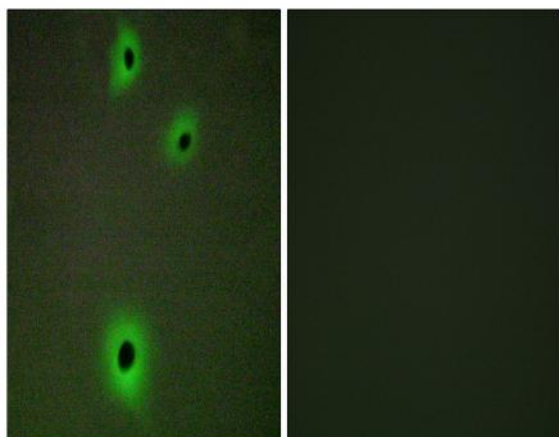
Catalog No :	YT2295
Reactivity :	Human;Mouse;Rat
Applications :	WB;IHC;IF;ELISA
Target :	IGSF4C
Gene Name :	CADM4
Protein Name :	Cell adhesion molecule 4
Human Gene Id :	199731
Human Swiss Prot No :	Q8NFZ8
Mouse Gene Id :	260299
Mouse Swiss Prot No :	Q8R464
Rat Gene Id :	365216
Rat Swiss Prot No :	Q1WIM1
Immunogen :	The antiserum was produced against synthesized peptide derived from human CADM4. AA range:339-388
Specificity :	IGSF4C Polyclonal Antibody detects endogenous levels of IGSF4C protein.
Formulation :	Liquid in PBS containing 50% glycerol, 0.5% BSA and 0.02% sodium azide.
Source :	Polyclonal, Rabbit,IgG
Dilution :	WB 1:500 - 1:2000. IHC 1:100 - 1:300. IF 1:200 - 1:1000. ELISA: 1:20000. Not yet tested in other applications.
Purification :	The antibody was affinity-purified from rabbit antiserum by affinity-chromatography using epitope-specific immunogen.

Concentration :	1 mg/ml
Storage Stability :	-15°C to -25°C/1 year(Do not lower than -25°C)
Observed Band :	48kD
Background :	function:Involved in the cell-cell adhesion. Has calcium- and magnesium-independent cell-cell adhesion activity. May have tumor-suppressor activity.,PTM:N-glycosylated.,similarity:Belongs to the nectin family.,similarity:Contains 1 Ig-like V-type (immunoglobulin-like) domain.,similarity:Contains 2 Ig-like C2-type (immunoglobulin-like) domains.,subunit:Monomer and homodimer.,tissue specificity:Expressed in brain, prostate, brain, kidney and some other organs.,
Function :	function:Involved in the cell-cell adhesion. Has calcium- and magnesium-independent cell-cell adhesion activity. May have tumor-suppressor activity.,PTM:N-glycosylated.,similarity:Belongs to the nectin family.,similarity:Contains 1 Ig-like V-type (immunoglobulin-like) domain.,similarity:Contains 2 Ig-like C2-type (immunoglobulin-like) domains.,subunit:Monomer and homodimer.,tissue specificity:Expressed in brain, prostate, brain, kidney and some other organs.,
Subcellular Location :	Membrane ; Single-pass type I membrane protein .
Expression :	Expressed in brain, prostate, brain, kidney and some other organs.
Sort :	8379
No4 :	1
Host :	Rabbit
Modifications :	Unmodified

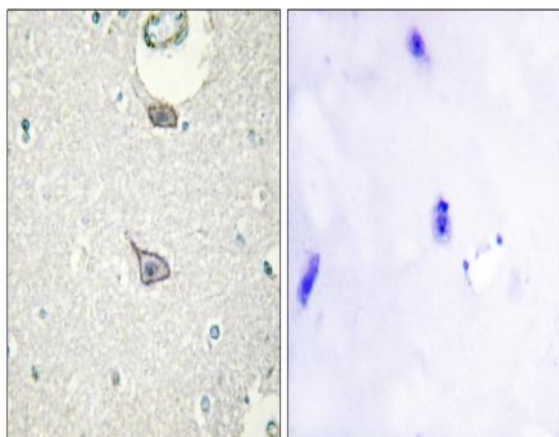
Products Images



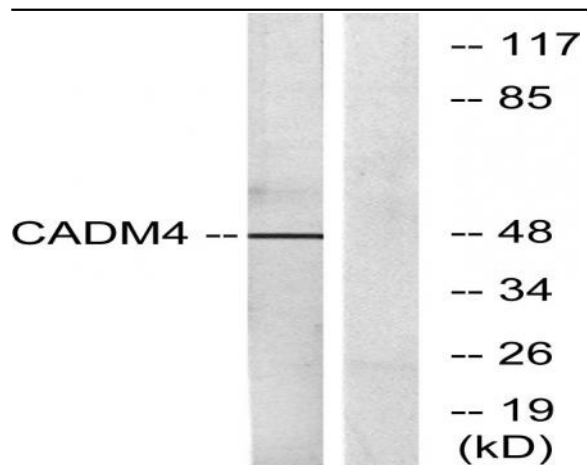
Western Blot analysis of RAW264.7 cells using IGSF4C Polyclonal Antibody



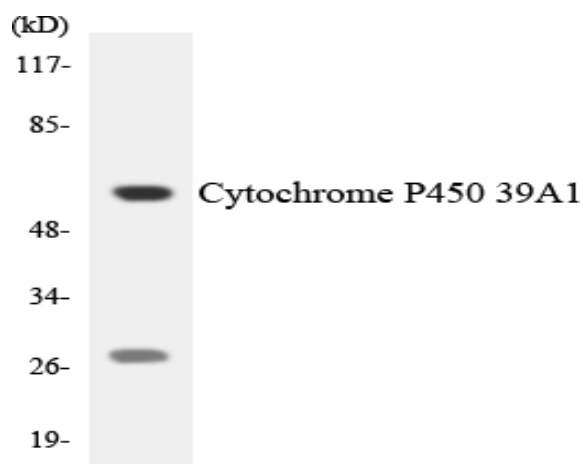
Immunofluorescence analysis of A549 cells, using CADM4 Antibody. The picture on the right is blocked with the synthesized peptide.



Immunohistochemistry analysis of paraffin-embedded human brain tissue, using CADM4 Antibody. The picture on the right is blocked with the synthesized peptide.



Western blot analysis of lysates from RAW264.7 cells, using CADM4 Antibody. The lane on the right is blocked with the synthesized peptide.



Western blot analysis of the lysates from HeLa cells using Cytochrome P450 39A1 antibody.