

IL-2 Polyclonal Antibody

| | |
|------------------------------|--|
| Catalog No : | YT2323 |
| Reactivity : | Human;Mouse;Rat |
| Applications : | WB;IHC;IF;ELISA |
| Target : | IL-2 |
| Fields : | >>Cytokine-cytokine receptor interaction;>>Viral protein interaction with cytokine and cytokine receptor;>>PI3K-Akt signaling pathway;>>C-type lectin receptor signaling pathway;>>JAK-STAT signaling pathway;>>Th1 and Th2 cell differentiation;>>Th17 cell differentiation;>>T cell receptor signaling pathway;>>Intestinal immune network for IgA production;>>Type I diabetes mellitus;>>Yersinia infection;>>Chagas disease;>>Measles;>>Human T-cell leukemia virus 1 infection;>>Coronavirus disease - COVID-19;>>Pathways in cancer;>>Autoimmune thyroid disease;>>Inflammatory bowel disease;>>Allograft rejection;>>Graft-versus-host disease |
| Gene Name : | IL2 |
| Protein Name : | Interleukin-2 |
| Human Gene Id : | 3558 |
| Human Swiss Prot No : | P60568 |
| Mouse Swiss Prot No : | P04351 |
| Rat Gene Id : | 116562 |
| Rat Swiss Prot No : | P17108 |
| Immunogen : | The antiserum was produced against synthesized peptide derived from human IL-2. AA range:16-65 |
| Specificity : | IL-2 Polyclonal Antibody detects endogenous levels of IL-2 protein. |
| Formulation : | Liquid in PBS containing 50% glycerol, 0.5% BSA and 0.02% sodium azide. |

| | |
|-------------------------------|--|
| Source : | Polyclonal, Rabbit,IgG |
| Dilution : | WB 1:500 - 1:2000. IHC: 1:100-300 ELISA: 1:20000. IF 1:100-300 Not yet tested in other applications. |
| Purification : | The antibody was affinity-purified from rabbit antiserum by affinity-chromatography using epitope-specific immunogen. |
| Concentration : | 1 mg/ml |
| Storage Stability : | -15°C to -25°C/1 year(Do not lower than -25°C) |
| Observed Band : | 15kD |
| Cell Pathway : | Cytokine-cytokine receptor interaction;Jak_STAT;T_Cell_Receptor;Intestinal immune network for IgA production;Type I diabetes mellitus;Autoimmune thyroid disease;Allograft rejection;Graft-versus-host d |
| Background : | The protein encoded by this gene is a secreted cytokine that is important for the proliferation of T and B lymphocytes. The receptor of this cytokine is a heterotrimeric protein complex whose gamma chain is also shared by interleukin 4 (IL4) and interleukin 7 (IL7). The expression of this gene in mature thymocytes is monoallelic, which represents an unusual regulatory mode for controlling the precise expression of a single gene. The targeted disruption of a similar gene in mice leads to ulcerative colitis-like disease, which suggests an essential role of this gene in the immune response to antigenic stimuli. [provided by RefSeq, Jul 2008], |
| Function : | disease:A chromosomal aberration involving IL2 is found in a form of T-cell acute lymphoblastic leukemia (T-ALL). Translocation t(4;16)(q26;p13) with involves TNFRSF17.,function:Produced by T-cells in response to antigenic or mitogenic stimulation, this protein is required for T-cell proliferation and other activities crucial to regulation of the immune response. Can stimulate B-cells, monocytes, lymphokine-activated killer cells, natural killer cells, and glioma cells.,online information:Interleukin-2 entry,online information:The Singapore human mutation and polymorphism database,pharmaceutical:Available under the name Proleukin (Chiron). Used in patients with renal cell carcinoma or metastatic melanoma.,similarity:Belongs to the IL-2 family., |
| Subcellular Location : | Secreted. |
| Expression : | Blood,PCR rescued clones,Placenta,Spleen, |
| Tag : | orthogonal |
| Sort : | 1 |

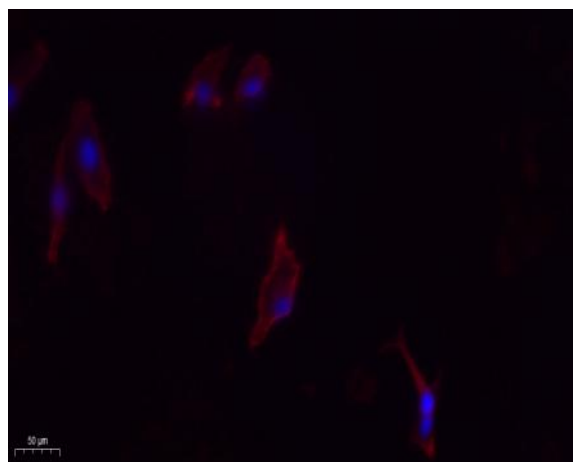
No3 : ab92381

No4 : 1

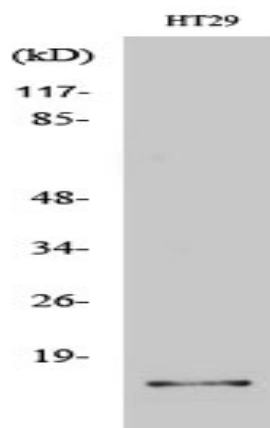
Host : Rabbit

Modifications : Unmodified

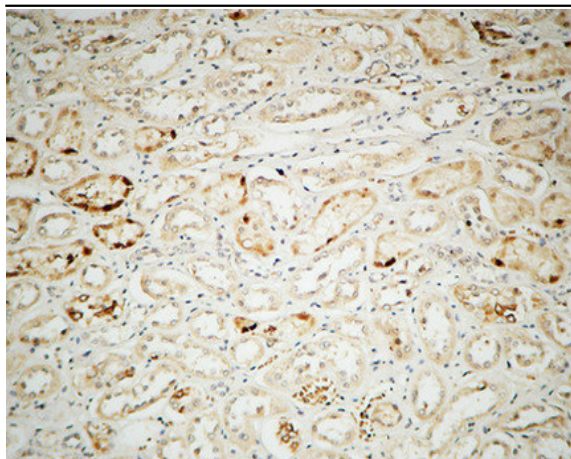
Products Images



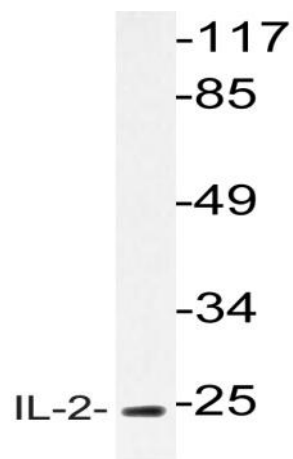
Immunofluorescence analysis of A549. 1, primary Antibody (red) was diluted at 1:200 (4 °C overnight). 2, Goat Anti Rabbit IgG (H&L) - Alexa Fluor 594 Secondary antibody was diluted at 1:1000 (room temperature, 50 min). 3, Picture B: DAPI (blue) 10 min.



Western Blot analysis of various cells using IL-2 Polyclonal Antibody



Immunohistochemical analysis of paraffin-embedded Human kidney. 1, Antibody was diluted at 1:100(4° overnight). 2, High-pressure and temperature EDTA, pH8.0 was used for antigen retrieval. 3,Secondary antibody was diluted at 1:200(room temperature, 30min).



Western blot analysis of lysate from HT-29 cells, using IL-2 antibody.