

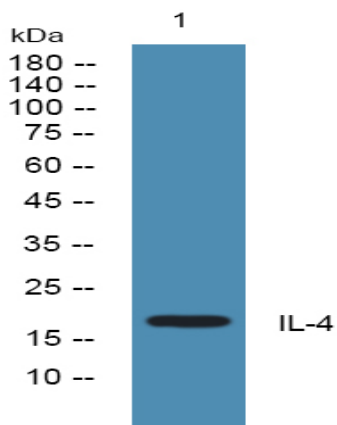
## IL-4 Polyclonal Antibody

<b>Catalog No :</b>	YT2335
<b>Reactivity :</b>	Human;Mouse
<b>Applications :</b>	WB;FCM;ELISA
<b>Target :</b>	IL-4
<b>Fields :</b>	>>Cytokine-cytokine receptor interaction;>>PI3K-Akt signaling pathway;>>JAK-STAT signaling pathway;>>Hematopoietic cell lineage;>>IL-17 signaling pathway;>>Th1 and Th2 cell differentiation;>>Th17 cell differentiation;>>T cell receptor signaling pathway;>>Fc epsilon RI signaling pathway;>>Intestinal immune network for IgA production;>>Leishmaniasis;>>Pathways in cancer;>>Asthma;>>Autoimmune thyroid disease;>>Inflammatory bowel disease;>>Allograft rejection
<b>Gene Name :</b>	IL4
<b>Protein Name :</b>	Interleukin-4
<b>Human Gene Id :</b>	3565
<b>Human Swiss Prot No :</b>	P05112
<b>Mouse Swiss Prot No :</b>	P07750
<b>Immunogen :</b>	Synthesized peptide derived from the C-terminal region of human IL-4.
<b>Specificity :</b>	IL-4 Polyclonal Antibody detects endogenous levels of IL-4 protein.
<b>Formulation :</b>	Liquid in PBS containing 50% glycerol, 0.5% BSA and 0.02% sodium azide.
<b>Source :</b>	Polyclonal, Rabbit,IgG
<b>Dilution :</b>	WB 1:500-2000;Flow Cyt 1:50-200;ELISA 1:5000-20000
<b>Purification :</b>	The antibody was affinity-purified from rabbit antiserum by affinity-chromatography using epitope-specific immunogen.

<b>Concentration :</b>	1 mg/ml
<b>Storage Stability :</b>	-15°C to -25°C/1 year(Do not lower than -25°C)
<b>Observed Band :</b>	18kD
<b>Cell Pathway :</b>	Cytokine-cytokine receptor interaction;Jak_STAT;Hematopoietic cell lineage;T_Cell_Receptor;Fc epsilon RI;Intestinal immune network for IgA production;Asthma;Autoimmune thyroid disease;Allograft reject
<b>Background :</b>	<p>The protein encoded by this gene is a pleiotropic cytokine produced by activated T cells. This cytokine is a ligand for interleukin 4 receptor. The interleukin 4 receptor also binds to IL13, which may contribute to many overlapping functions of this cytokine and IL13. STAT6, a signal transducer and activator of transcription, has been shown to play a central role in mediating the immune regulatory signal of this cytokine. This gene, IL3, IL5, IL13, and CSF2 form a cytokine gene cluster on chromosome 5q, with this gene particularly close to IL13. This gene, IL13 and IL5 are found to be regulated coordinately by several long-range regulatory elements in an over 120 kilobase range on the chromosome. Two alternatively spliced transcript variants of this gene encoding distinct isoforms have been reported. [provided by RefSeq, Jul 2008],</p>
<b>Function :</b>	<p>disease:Genetic variations in IL4 may be a cause of susceptibility to ischemic stroke [MIM:601367]; also known as cerebrovascular accident or cerebral infarction. A stroke is an acute neurologic event leading to death of neural tissue of the brain and resulting in loss of motor, sensory and/or cognitive function. Ischemic strokes, resulting from vascular occlusion, is considered to be a highly complex disease consisting of a group of heterogeneous disorders with multiple genetic and environmental risk factors.,function:Participates in at least several B-cell activation processes as well as of other cell types. It is a costimulator of DNA-synthesis. It induces the expression of class II MHC molecules on resting B-cells. It enhances both secretion and cell surface expression of IgE and IgG1. It also regulates the expression of the low affinity Fc receptor for IgE (CD23) on both lymphocytes</p>
<b>Subcellular Location :</b>	Secreted.
<b>Expression :</b>	Blood,PCR rescued clones,
<b>Tag :</b>	orthogonal
<b>Sort :</b>	8512
<b>No4 :</b>	1
<b>Host :</b>	Rabbit

**Modifications :** Unmodified

## Products Images



Western blot analysis of lysates from A431 cells, primary antibody was diluted at 1:1000, 4° over night