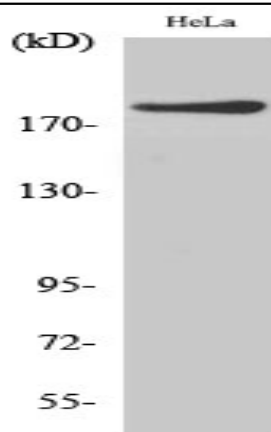


IQGAP1 Polyclonal Antibody

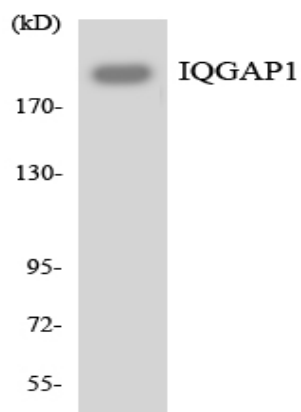
Catalog No :	YT2387
Reactivity :	Human;Mouse
Applications :	WB;IHC
Target :	IQGAP1
Fields :	>>Adherens junction;>>Regulation of actin cytoskeleton;>>Proteoglycans in cancer
Gene Name :	IQGAP1
Protein Name :	Ras GTPase-activating-like protein IQGAP1
Human Gene Id :	8826
Human Swiss Prot No :	P46940
Mouse Gene Id :	29875
Mouse Swiss Prot No :	Q9JKF1
Immunogen :	The antiserum was produced against synthesized peptide derived from human IQGAP1. AA range:247-296
Specificity :	IQGAP1 Polyclonal Antibody detects endogenous levels of IQGAP1 protein.
Formulation :	Liquid in PBS containing 50% glycerol, 0.5% BSA and 0.02% sodium azide.
Source :	Polyclonal, Rabbit,IgG
Dilution :	WB 1:500-2000;IHC 1:50-300
Purification :	The antibody was affinity-purified from rabbit antiserum by affinity-chromatography using epitope-specific immunogen.
Concentration :	1 mg/ml

Storage Stability :	<u>-15°C to -25°C/1 year(Do not lower than -25°C)</u>
Observed Band :	<u>190kD</u>
Cell Pathway :	<u>Adherens_Junction;Regulates Actin and Cytoskeleton;</u>
Background :	<u>IQ motif containing GTPase activating protein 1 (IQGAP1) Homo sapiens This gene encodes a member of the IQGAP family. The protein contains four IQ domains, one calponin homology domain, one Ras-GAP domain and one WW domain. It interacts with components of the cytoskeleton, with cell adhesion molecules, and with several signaling molecules to regulate cell morphology and motility. Expression of the protein is upregulated by gene amplification in two gastric cancer cell lines. [provided by RefSeq, Jul 2008],</u>
Function :	<u>domain:Regions C1 and C2 can either interact with nucleotide-free CDC42, or interact together, depending on the phosphorylation state of Ser-1443. When Ser-1443 is not phosphorylated, C1 and C2 interact, which prevents binding of nucleotide-free CDC42 and promotes binding of GTP-bound CDC42. Phosphorylation of Ser-1443 prevents interaction between C1 and C2, which opens the structure of the C-terminus and allows binding and sequestration of nucleotide-free CDC42 on both C1 and C2.,function:Binds to activated CDC42 but does not stimulate its GTPase activity. It associates with calmodulin. Could serve as an assembly scaffold for the organization of a multimolecular complex that would interface incoming signals to the reorganization of the actin cytoskeleton at the plasma membrane. May promote neurite outgrowth.,PTM:Phosphorylation of Ser-1443 by PKC prevents interaction between C1 and C2,</u>
Subcellular Location :	<u>Cell membrane . Nucleus . Cytoplasm . Subcellular distribution is regulated by the cell cycle, nuclear levels increase at G1/S phase (PubMed:20883816). .</u>
Expression :	<u>Expressed in the placenta, lung, and kidney. A lower level expression is seen in the heart, liver, skeletal muscle and pancreas.</u>
Sort :	<u>8652</u>
No4 :	<u>1</u>
Host :	<u>Rabbit</u>
Modifications :	<u>Unmodified</u>

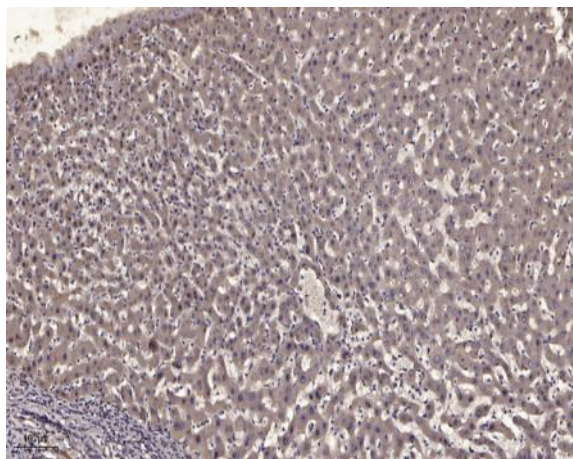
Products Images



Western Blot analysis of HeLa cells using IQGAP1 Polyclonal Antibody diluted at 1:1000



Western blot analysis of the lysates from K562 cells using IQGAP1 antibody.



Immunohistochemical analysis of paraffin-embedded human liver cancer. 1, Antibody was diluted at 1:200(4° overnight). 2, Tris-EDTA,pH9.0 was used for antigen retrieval. 3,Secondary antibody was diluted at 1:200(room temperature, 45min).