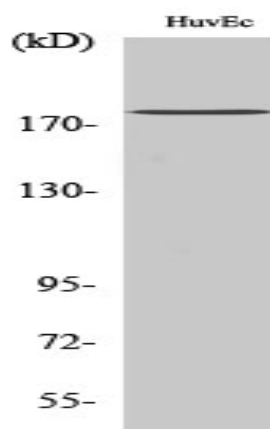


IQGAP3 Polyclonal Antibody

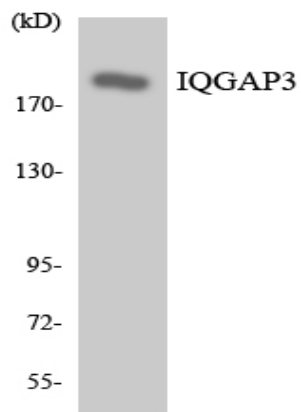
Catalog No :	YT2388
Reactivity :	Human;Mouse;Rat
Applications :	WB;ELISA;IHC
Target :	IQGAP3
Fields :	>>Regulation of actin cytoskeleton
Gene Name :	IQGAP3
Protein Name :	Ras GTPase-activating-like protein IQGAP3
Human Gene Id :	128239
Human Swiss Prot No :	Q86VI3
Immunogen :	The antiserum was produced against synthesized peptide derived from human IQGAP3. AA range:107-156
Specificity :	IQGAP3 Polyclonal Antibody detects endogenous levels of IQGAP3 protein.
Formulation :	Liquid in PBS containing 50% glycerol, 0.5% BSA and 0.02% sodium azide.
Source :	Polyclonal, Rabbit,IgG
Dilution :	WB 1:500-2000;IHC 1:50-300; ELISA 2000-20000
Purification :	The antibody was affinity-purified from rabbit antiserum by affinity-chromatography using epitope-specific immunogen.
Concentration :	1 mg/ml
Storage Stability :	-15°C to -25°C/1 year(Do not lower than -25°C)
Observed Band :	180kD

Cell Pathway :	Regulates Actin and Cytoskeleton;
Background :	similarity:Contains 1 CH (calponin-homology) domain.,similarity:Contains 1 Ras-GAP domain.,similarity:Contains 4 IQ domains.,
Function :	similarity:Contains 1 CH (calponin-homology) domain.,similarity:Contains 1 Ras-GAP domain.,similarity:Contains 4 IQ domains.,
Subcellular Location :	cytosol,cell-cell junction,lateral plasma membrane,
Expression :	Embryonic kidney,
Sort :	8653
No4 :	1
Host :	Rabbit
Modifications :	Unmodified

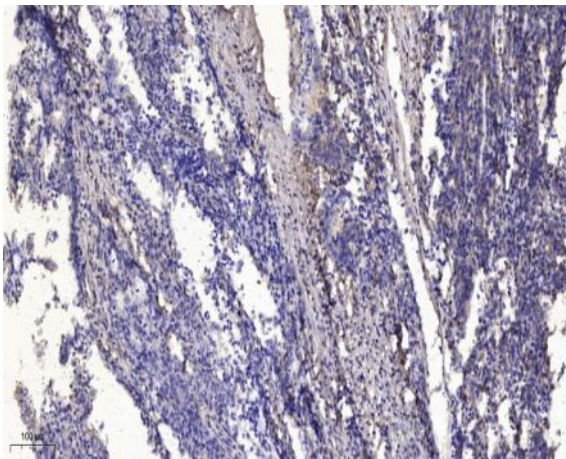
Products Images



Western Blot analysis of various cells using IQGAP3 Polyclonal Antibody diluted at 1:1000



Western blot analysis of the lysates from 293 cells using IQGAP3 antibody.



Immunohistochemical analysis of paraffin-embedded human Gastric adenocarcinoma. 1, Antibody was diluted at 1:200(4° overnight). 2, Tris-EDTA,pH9.0 was used for antigen retrieval. 3,Secondary antibody was diluted at 1:200(room temperature, 45min).