

IRX3 Polyclonal Antibody

Catalog No :	YT2414
Reactivity :	Human;Mouse
Applications :	IHC;IF;ELISA
Target :	IRX3
Gene Name :	IRX3
Protein Name :	Iroquois-class homeodomain protein IRX-3
Human Gene Id :	79191
Human Swiss Prot No :	P78415
Mouse Gene Id :	16373
Mouse Swiss Prot No :	P81067
Immunogen :	The antiserum was produced against synthesized peptide derived from human IRX3. AA range:271-320
Specificity :	IRX3 Polyclonal Antibody detects endogenous levels of IRX3 protein.
Formulation :	Liquid in PBS containing 50% glycerol, 0.5% BSA and 0.02% sodium azide.
Source :	Polyclonal, Rabbit,IgG
Dilution :	IHC 1:100 - 1:300. ELISA: 1:20000.. IF 1:50-200
Purification :	The antibody was affinity-purified from rabbit antiserum by affinity-chromatography using epitope-specific immunogen.
Concentration :	1 mg/ml
Storage Stability :	-15°C to -25°C/1 year(Do not lower than -25°C)

Molecularweight : 52kD

Background : IRX3 is a member of the Iroquois homeobox gene family (see IRX1; MIM 606197) and plays a role in an early step of neural development (Bellefroid et al., 1998 [PubMed 9427753]). Members of this family appear to play multiple roles during pattern formation of vertebrate embryos (Lewis et al., 1999 [PubMed 10370142]).[supplied by OMIM, Aug 2009],

Function : similarity:Belongs to the TALE/IRO homeobox family.,similarity:Contains 1 homeobox DNA-binding domain.,

Subcellular Nucleus .

Location :**Expression :** Muscle,Skin,

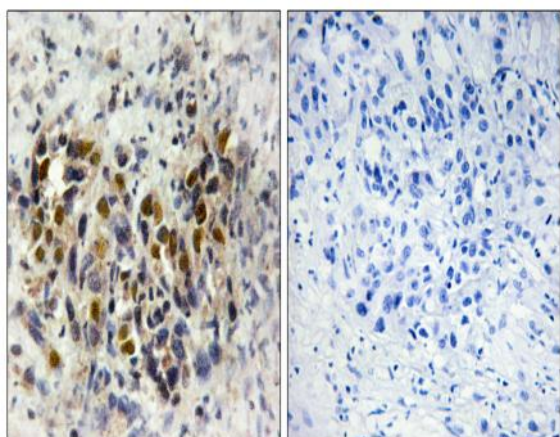
Sort : 1

No4 : 1

Host : Rabbit

Modifications : Unmodified

Products Images



Immunohistochemistry analysis of paraffin-embedded human breast carcinoma tissue, using IRX3 Antibody. The picture on the right is blocked with the synthesized peptide.