

## Jun D Polyclonal Antibody

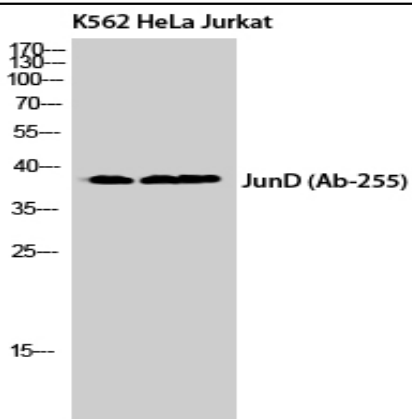
<b>Catalog No :</b>	YT2447
<b>Reactivity :</b>	Human;Mouse;Rat
<b>Applications :</b>	WB;IHC;IF;IP;ELISA
<b>Target :</b>	Jun D
<b>Fields :</b>	>>MAPK signaling pathway;>>Osteoclast differentiation;>>IL-17 signaling pathway;>>Parathyroid hormone synthesis, secretion and action
<b>Gene Name :</b>	JUND
<b>Protein Name :</b>	Transcription factor jun-D
<b>Human Gene Id :</b>	3727
<b>Human Swiss Prot No :</b>	P17535
<b>Mouse Gene Id :</b>	16478
<b>Mouse Swiss Prot No :</b>	P15066
<b>Rat Gene Id :</b>	24518
<b>Rat Swiss Prot No :</b>	P52909
<b>Immunogen :</b>	The antiserum was produced against synthesized peptide derived from human JunD. AA range:222-271
<b>Specificity :</b>	Jun D Polyclonal Antibody detects endogenous levels of Jun D protein.
<b>Formulation :</b>	Liquid in PBS containing 50% glycerol, 0.5% BSA and 0.02% sodium azide.
<b>Source :</b>	Polyclonal, Rabbit,IgG
<b>Dilution :</b>	WB 1:500 - 1:2000. IHC 1:100 - 1:300. Immunoprecipitation: 2-5 ug:mg lysate. ELISA: 1:20000.. IF 1:50-200

---

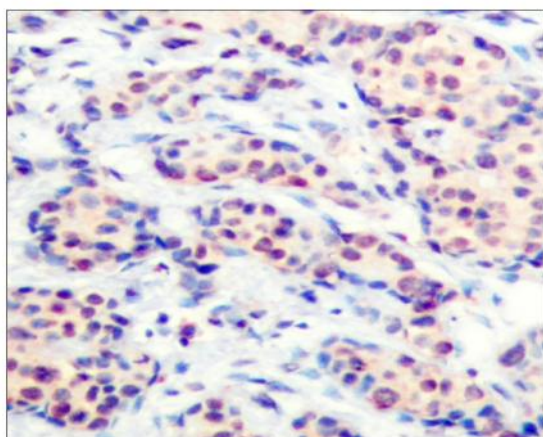
<b>Purification :</b>	The antibody was affinity-purified from rabbit antiserum by affinity-chromatography using epitope-specific immunogen.
<b>Concentration :</b>	1 mg/ml
<b>Storage Stability :</b>	-15°C to -25°C/1 year(Do not lower than -25°C)
<b>Observed Band :</b>	38kD
<b>Cell Pathway :</b>	MAPK_ERK_Growth;MAPK_G_Protein;
<b>Background :</b>	The protein encoded by this intronless gene is a member of the JUN family, and a functional component of the AP1 transcription factor complex. This protein has been proposed to protect cells from p53-dependent senescence and apoptosis. Alternative translation initiation site usage results in the production of different isoforms (PMID:12105216). [provided by RefSeq, Nov 2013],
<b>Function :</b>	function:Binds an AP-1 site and upon cotransfection stimulates the activity of a promoter that bears an AP-1 site.,similarity:Belongs to the bZIP family. Jun subfamily.,similarity:Contains 1 bZIP domain.,subunit:Binds DNA as a dimer.,
<b>Subcellular Location :</b>	Nucleus.
<b>Expression :</b>	Epithelium,Spleen,
<b>Tag :</b>	ip
<b>Sort :</b>	8819
<b>No4 :</b>	1
<b>Host :</b>	Rabbit
<b>Modifications :</b>	Unmodified

---

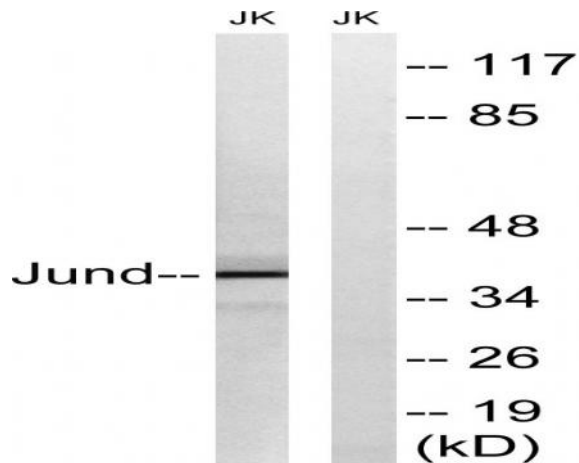
## Products Images



Western Blot analysis of K562 HeLa Jurkat cells using Jun D Polyclonal Antibody cells nucleus extracted by Minute TM Cytoplasmic and Nuclear Fractionation kit (SC-003, Inventbiotech, MN, USA).



Immunohistochemistry analysis of paraffin-embedded human breast carcinoma tissue, using JunD Antibody. The picture on the right is blocked with the synthesized peptide.



Western blot analysis of lysates from Jurkat cells, using JunD Antibody. The lane on the right is blocked with the synthesized peptide.