

KIR3.4 Polyclonal Antibody

| | |
|------------------------------|--|
| Catalog No : | YT2477 |
| Reactivity : | Human;Rat;Mouse; |
| Applications : | WB;IHC |
| Target : | KIR3.4 |
| Fields : | >>Circadian entrainment;>>Retrograde endocannabinoid signaling;>>Serotonergic synapse;>>Dopaminergic synapse;>>Estrogen signaling pathway;>>Oxytocin signaling pathway;>>Aldosterone synthesis and secretion;>>GnRH secretion;>>Morphine addiction |
| Gene Name : | KCNJ5 |
| Protein Name : | G protein-activated inward rectifier potassium channel 4 |
| Human Gene Id : | 3762 |
| Human Swiss Prot No : | P48544 |
| Mouse Swiss Prot No : | P48545 |
| Immunogen : | The antiserum was produced against synthesized peptide derived from human KCNJ5. AA range:370-419 |
| Specificity : | KIR3.4 Polyclonal Antibody detects endogenous levels of KIR3.4 protein. |
| Formulation : | Liquid in PBS containing 50% glycerol, 0.5% BSA and 0.02% sodium azide. |
| Source : | Polyclonal, Rabbit,IgG |
| Dilution : | WB 1:500-2000;IHC 1:50-300 |
| Purification : | The antibody was affinity-purified from rabbit antiserum by affinity-chromatography using epitope-specific immunogen. |
| Concentration : | 1 mg/ml |

Storage Stability : -15°C to -25°C/1 year(Do not lower than -25°C)

Observed Band : 48kD

Background : Potassium channels are present in most mammalian cells, where they participate in a wide range of physiologic responses. The protein encoded by this gene is an integral membrane protein and inward-rectifier type potassium channel. The encoded protein, which has a greater tendency to allow potassium to flow into a cell rather than out of a cell, is controlled by G-proteins. It may associate with two other G-protein-activated potassium channels to form a heteromultimeric pore-forming complex. [provided by RefSeq, Jul 2008],

Function : function:This potassium channel is controlled by G proteins. Inward rectifier potassium channels are characterized by a greater tendency to allow potassium to flow into the cell rather than out of it. Their voltage dependence is regulated by the concentration of extracellular potassium; as external potassium is raised, the voltage range of the channel opening shifts to more positive voltages. The inward rectification is mainly due to the blockage of outward current by internal magnesium. Can be blocked by external barium.,similarity:Belongs to the inward rectifier-type potassium channel family.,subunit:May associate with GIRK1 and GIRK2 to form a G-protein-activated heteromultimer pore-forming unit. The resulting inward current is much larger.,tissue specificity:Islets, exocrine pancreas and heart.,

Subcellular Location : Membrane ; Multi-pass membrane protein .

Expression : Islets, exocrine pancreas and heart. Expressed in the adrenal cortex, particularly the zona glomerulosa.

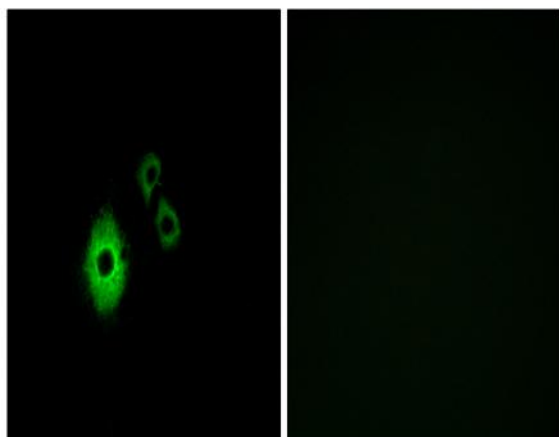
Sort : 8927

No4 : 1

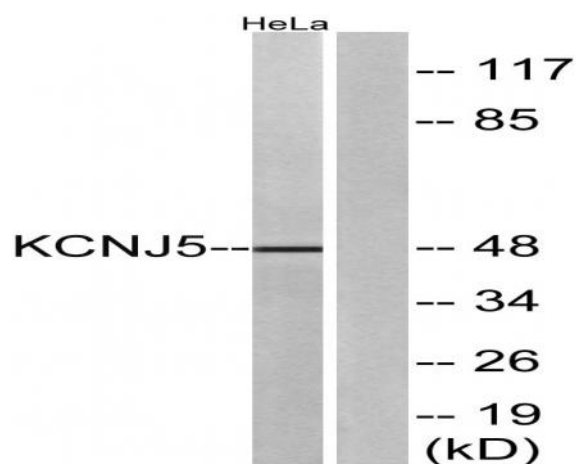
Host : Rabbit

Modifications : Unmodified

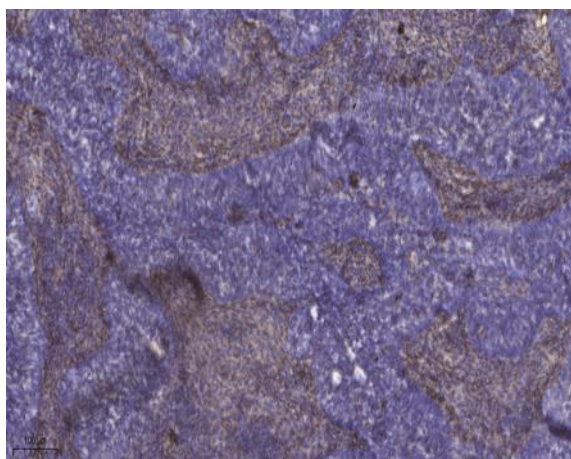
Products Images



Immunofluorescence analysis of A549 cells, using KCNJ5 Antibody. The picture on the right is blocked with the synthesized peptide.



Western blot analysis of lysates from HeLa cells, using KCNJ5 Antibody. The lane on the right is blocked with the synthesized peptide.



Immunohistochemical analysis of paraffin-embedded human cervical carcinoma. 1, Antibody was diluted at 1:200(4° overnight). 2, Tris-EDTA,pH9.0 was used for antigen retrieval. 3,Secondary antibody was diluted at 1:200(room temperature, 45min).