

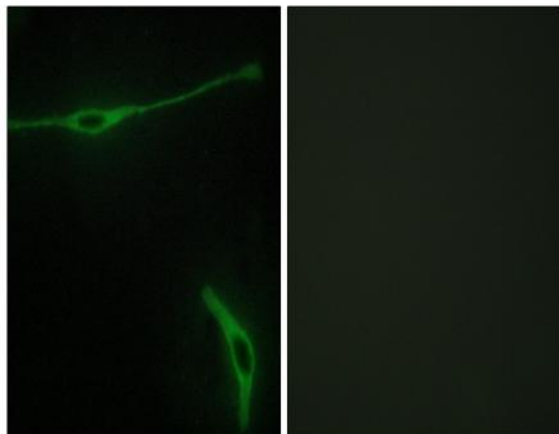
Laminin α -2 Polyclonal Antibody

Catalog No :	YT2524
Reactivity :	Human;Mouse
Applications :	IHC;IF;ELISA
Target :	Laminin α -2
Fields :	>>PI3K-Akt signaling pathway;>>Focal adhesion;>>ECM-receptor interaction;>>Toxoplasmosis;>>Amoebiasis;>>Human papillomavirus infection;>>Pathways in cancer;>>Small cell lung cancer;>>Hypertrophic cardiomyopathy;>>Arrhythmogenic right ventricular cardiomyopathy;>>Dilated cardiomyopathy;>>Viral myocarditis
Gene Name :	LAMA2
Protein Name :	Laminin subunit alpha-2
Human Gene Id :	3908
Human Swiss Prot No :	P24043
Mouse Swiss Prot No :	Q60675
Immunogen :	The antiserum was produced against synthesized peptide derived from human LAMA2. AA range:2011-2060
Specificity :	Laminin α -2 Polyclonal Antibody detects endogenous levels of Laminin α -2 protein.
Formulation :	Liquid in PBS containing 50% glycerol, 0.5% BSA and 0.02% sodium azide.
Source :	Polyclonal, Rabbit,IgG
Dilution :	IHC 1:100 - 1:300. IF 1:200 - 1:1000. ELISA: 1:20000. Not yet tested in other applications.
Purification :	The antibody was affinity-purified from rabbit antiserum by affinity-chromatography using epitope-specific immunogen.

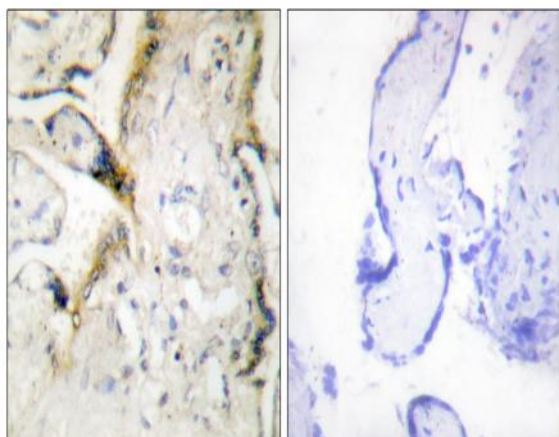
Concentration :	1 mg/ml
Storage Stability :	-15°C to -25°C/1 year(Do not lower than -25°C)
Molecularweight :	343kD
Cell Pathway :	Focal adhesion;ECM-receptor interaction;Pathways in cancer;Small cell lung cancer;Hypertrophic cardiomyopathy (HCM);Arrhythmogenic right ventricular cardiomyopathy (ARVC);Dilated cardiomyopathy;Viral
Background :	Laminin, an extracellular protein, is a major component of the basement membrane. It is thought to mediate the attachment, migration, and organization of cells into tissues during embryonic development by interacting with other extracellular matrix components. It is composed of three subunits, alpha, beta, and gamma, which are bound to each other by disulfide bonds into a cross-shaped molecule. This gene encodes the alpha 2 chain, which constitutes one of the subunits of laminin 2 (merosin) and laminin 4 (s-merosin). Mutations in this gene have been identified as the cause of congenital merosin-deficient muscular dystrophy. Two transcript variants encoding different proteins have been found for this gene. [provided by RefSeq, Jul 2008],
Function :	disease:Defects in LAMA2 are the cause of merosin-deficient congenital muscular dystrophy type 1A (MDC1A) [MIM:607855]. MDC1A is characterized by difficulty walking, hypotonia, proximal weakness, hyporeflexia, and white matter hypodensity on MRI.,domain:Domains VI, IV and G are globular.,domain:The alpha-helical domains I and II are thought to interact with other laminin chains to form a coiled coil structure.,function:Binding to cells via a high affinity receptor, laminin is thought to mediate the attachment, migration and organization of cells into tissues during embryonic development by interacting with other extracellular matrix components.,similarity:Contains 1 laminin N-terminal domain.,similarity:Contains 17 laminin EGF-like domains.,similarity:Contains 2 laminin IV type A domains.,similarity:Contains 5 laminin G-like domains.,subcellular location:Major component.,subunit:Laminin
Subcellular Location :	Secreted, extracellular space, extracellular matrix, basement membrane. Major component.
Expression :	Placenta, striated muscle, peripheral nerve, cardiac muscle, pancreas, lung, spleen, kidney, adrenal gland, skin, testis, meninges, choroid plexus, and some other regions of the brain; not in liver, thymus and bone.
Tag :	hot
Sort :	9106
No4 :	1

Host : Rabbit**Modifications :** Unmodified

Products Images



Immunofluorescence analysis of NIH/3T3 cells, using LAMA2 Antibody. The picture on the right is blocked with the synthesized peptide.



Immunohistochemistry analysis of paraffin-embedded human placenta tissue, using LAMA2 Antibody. The picture on the right is blocked with the synthesized peptide.