

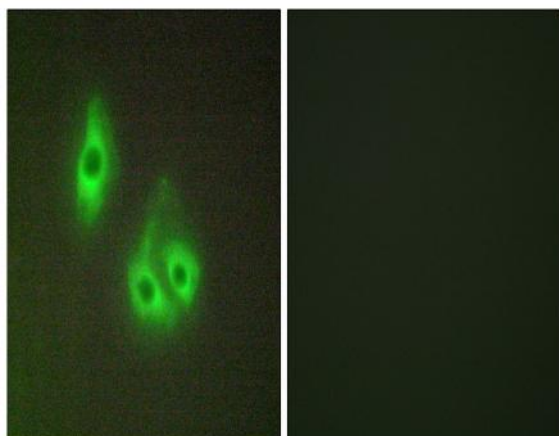
Laminin α -3 Polyclonal Antibody

Catalog No :	YT2525
Reactivity :	Human;Mouse;Rat
Applications :	WB;IHC;IF;ELISA
Target :	Laminin α -3
Fields :	>>PI3K-Akt signaling pathway;>>Focal adhesion;>>ECM-receptor interaction;>>Toxoplasmosis;>>Amoebiasis;>>Human papillomavirus infection;>>Pathways in cancer;>>Small cell lung cancer
Gene Name :	LAMA3
Protein Name :	Laminin subunit alpha-3
Human Gene Id :	3909
Human Swiss Prot No :	Q16787
Mouse Swiss Prot No :	Q61789
Immunogen :	The antiserum was produced against synthesized peptide derived from human LAMA3. AA range:2571-2620
Specificity :	Laminin α -3 Polyclonal Antibody detects endogenous levels of Laminin α -3 protein.
Formulation :	Liquid in PBS containing 50% glycerol, 0.5% BSA and 0.02% sodium azide.
Source :	Polyclonal, Rabbit,IgG
Dilution :	WB 1:500 - 1:2000. IHC 1:100 - 1:300. IF 1:200 - 1:1000. ELISA: 1:40000. Not yet tested in other applications.
Purification :	The antibody was affinity-purified from rabbit antiserum by affinity-chromatography using epitope-specific immunogen.

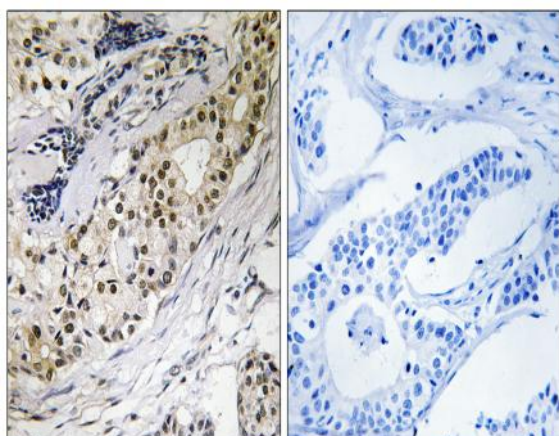
Concentration :	1 mg/ml
Storage Stability :	-15°C to -25°C/1 year(Do not lower than -25°C)
Molecularweight :	343kD
Observed Band :	120 60kD
Cell Pathway :	Focal adhesion;ECM-receptor interaction;Pathways in cancer;Small cell lung cancer;
Background :	<p>The protein encoded by this gene belongs to the laminin family of secreted molecules. Laminins are heterotrimeric molecules that consist of alpha, beta, and gamma subunits that assemble through a coiled-coil domain. Laminins are essential for formation and function of the basement membrane and have additional functions in regulating cell migration and mechanical signal transduction. This gene encodes an alpha subunit and is responsive to several epithelial-mesenchymal regulators including keratinocyte growth factor, epidermal growth factor and insulin-like growth factor. Mutations in this gene have been identified as the cause of Hurler type junctional epidermolysis bullosa and laryngoonychocutaneous syndrome. Alternative splicing and alternative promoter usage result in multiple transcript variants. [provided by RefSeq, Dec 2014],</p>
Function :	<p>disease:Defects in LAMA3 are a cause of epidermolysis bullosa junctional Hurler type (H-JEB) [MIM:226700]; also known as junctional epidermolysis bullosa Hurler-Pearson type. JEB defines a group of blistering skin diseases characterized by tissue separation which occurs within the dermo-epidermal basement membrane. H-JEB is a severe, infantile and lethal form. Death occurs usually within the first six months of life. Occasionally, children survive to teens. H-JEB is marked by bullous lesions at birth and extensive denudation of skin and mucous membranes that may be hemorrhagic.,disease:Defects in LAMA3 are the cause of laryngoonychocutaneous syndrome (LOCS) [MIM:245660]. LOCS is an autosomal recessive epithelial disorder confined to the Punjabi Muslim population. The condition is characterized by cutaneous erosions, nail dystrophy and exuberant vascular granulation tissue in certain ep</p>
Subcellular Location :	Secreted, extracellular space, extracellular matrix, basement membrane. Major component.
Expression :	Skin; respiratory, urinary, and digestive epithelia and in other specialized tissues with prominent secretory or protective functions. Epithelial basement membrane, and epithelial cell tongue that migrates into a wound bed. A differential and focal expression of the subunit alpha-3 is observed in the CNS.
Tag :	hot
	9107

Sort :	<u>1</u>
Host :	<u>Rabbit</u>
Modifications :	<u>Unmodified</u>

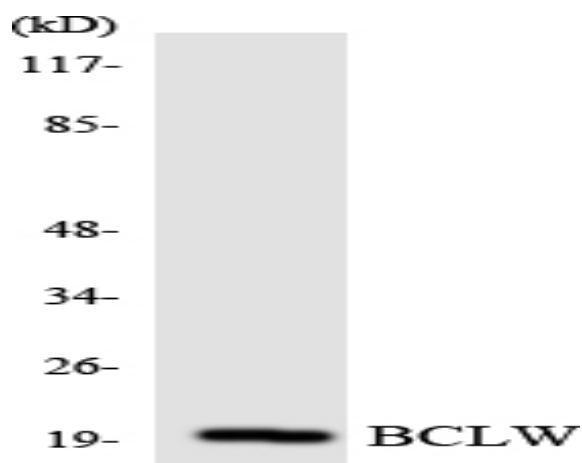
Products Images



Immunofluorescence analysis of HepG2 cells, using LAMA3 Antibody. The picture on the right is blocked with the synthesized peptide.



Immunohistochemistry analysis of paraffin-embedded human colon carcinoma tissue, using LAMA3 Antibody. The picture on the right is blocked with the synthesized peptide.



Western blot analysis of the lysates from HeLa cells using BCLW antibody.