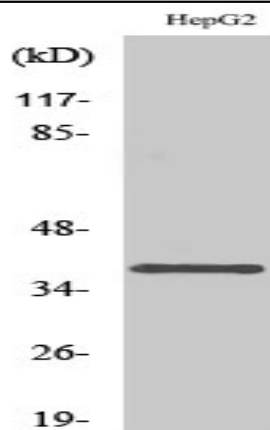


## L-type Ca<sup>++</sup> CP $\gamma$ 7 Polyclonal Antibody

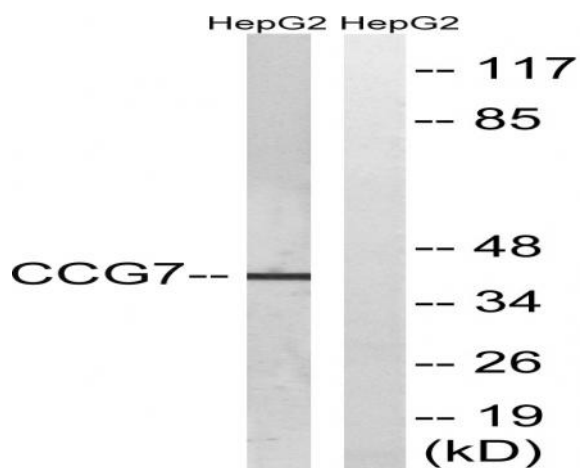
<b>Catalog No :</b>	YT2600
<b>Reactivity :</b>	Human;Mouse;Rat
<b>Applications :</b>	WB;ELISA
<b>Target :</b>	L-type Ca <sup>++</sup> CP $\gamma$ 7
<b>Fields :</b>	>>MAPK signaling pathway;>>Cardiac muscle contraction;>>Adrenergic signaling in cardiomyocytes;>>Oxytocin signaling pathway;>>Hypertrophic cardiomyopathy;>>Arrhythmogenic right ventricular cardiomyopathy;>>Dilated cardiomyopathy
<b>Gene Name :</b>	CACNG7
<b>Protein Name :</b>	Voltage-dependent calcium channel gamma-7 subunit
<b>Human Gene Id :</b>	59284
<b>Human Swiss Prot No :</b>	P62955
<b>Mouse Gene Id :</b>	81904
<b>Mouse Swiss Prot No :</b>	P62956
<b>Rat Gene Id :</b>	140728
<b>Rat Swiss Prot No :</b>	P62957
<b>Immunogen :</b>	The antiserum was produced against synthesized peptide derived from human CACNG7. AA range:198-247
<b>Specificity :</b>	L-type Ca <sup>++</sup> CP $\gamma$ 7 Polyclonal Antibody detects endogenous levels of L-type Ca <sup>++</sup> CP $\gamma$ 7 protein.
<b>Formulation :</b>	Liquid in PBS containing 50% glycerol, 0.5% BSA and 0.02% sodium azide.
<b>Source :</b>	Polyclonal, Rabbit,IgG

<b>Dilution :</b>	WB 1:500 - 1:2000. ELISA: 1:20000. Not yet tested in other applications.
<b>Purification :</b>	The antibody was affinity-purified from rabbit antiserum by affinity-chromatography using epitope-specific immunogen.
<b>Concentration :</b>	1 mg/ml
<b>Storage Stability :</b>	-15°C to -25°C/1 year(Do not lower than -25°C)
<b>Observed Band :</b>	40kD
<b>Cell Pathway :</b>	MAPK_ERK_Growth;MAPK_G_Protein;Cardiac muscle contraction;Hypertrophic cardiomyopathy (HCM);Arrhythmogenic right ventricular cardiomyopathy (ARVC);Dilated cardiomyopathy;
<b>Background :</b>	calcium voltage-gated channel auxiliary subunit gamma 7(CACNG7) Homo sapiens The protein encoded by this gene is a type II transmembrane AMPA receptor regulatory protein (TARP). TARPs regulate both trafficking and channel gating of the AMPA receptors. This gene is part of a functionally diverse eight-member protein subfamily of the PMP-22/EMP/MP20 family and is located in a cluster with two family members, a type I TARP and a calcium channel gamma subunit. [provided by RefSeq, Dec 2010],
<b>Function :</b>	function:Thought to stabilize the calcium channel in an inactivated (closed) state.,similarity:Belongs to the PMP-22/EMP/MP20 family. CACNG subfamily.,subunit:The L-type calcium channel is composed of five subunits: alpha-1, alpha-2/delta, beta and gamma.,tissue specificity:Widely expressed.,
<b>Subcellular Location :</b>	Cell membrane ; Multi-pass membrane protein .
<b>Expression :</b>	Detected in heart left ventricle (PubMed:21127204). Widely expressed.
<b>Sort :</b>	9282
<b>No4 :</b>	1
<b>Host :</b>	Rabbit
<b>Modifications :</b>	Unmodified

## Products Images



Western Blot analysis of various cells using L-type  $\text{Ca}^{++}$  CP  $\gamma$ 7 Polyclonal Antibody diluted at 1:1000



Western blot analysis of lysates from HepG2 cells, using CACNG7 Antibody. The lane on the right is blocked with the synthesized peptide.