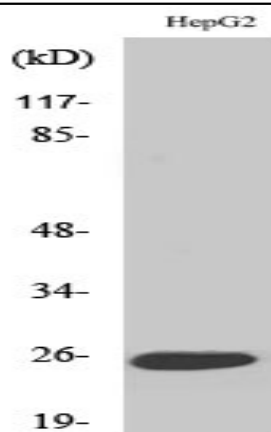


LT- β Polyclonal Antibody

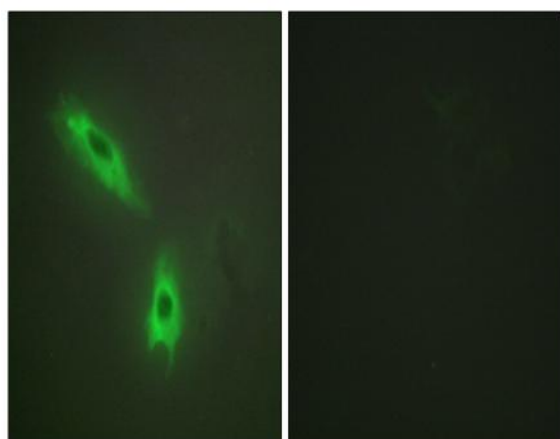
Catalog No :	YT2601
Reactivity :	Human;Mouse
Applications :	WB;IF;ELISA
Target :	LT- β
Fields :	>>Cytokine-cytokine receptor interaction;>>NF-kappa B signaling pathway;>>Rheumatoid arthritis
Gene Name :	LTB
Protein Name :	Lymphotoxin-beta
Human Gene Id :	4050
Human Swiss Prot No :	Q06643
Mouse Gene Id :	16994
Mouse Swiss Prot No :	P41155
Immunogen :	The antiserum was produced against synthesized peptide derived from human TNFC. AA range:181-230
Specificity :	LT- β Polyclonal Antibody detects endogenous levels of LT- β protein.
Formulation :	Liquid in PBS containing 50% glycerol, 0.5% BSA and 0.02% sodium azide.
Source :	Polyclonal, Rabbit,IgG
Dilution :	WB 1:500 - 1:2000. IF 1:200 - 1:1000. ELISA: 1:10000. Not yet tested in other applications.
Purification :	The antibody was affinity-purified from rabbit antiserum by affinity-chromatography using epitope-specific immunogen.

Concentration :	1 mg/ml
Storage Stability :	-15°C to -25°C/1 year(Do not lower than -25°C)
Observed Band :	22kD
Cell Pathway :	Cytokine-cytokine receptor interaction;
Background :	Lymphotoxin beta is a type II membrane protein of the TNF family. It anchors lymphotoxin-alpha to the cell surface through heterotrimer formation. The predominant form on the lymphocyte surface is the lymphotoxin-alpha 1/beta 2 complex (e.g. 1 molecule alpha/2 molecules beta) and this complex is the primary ligand for the lymphotoxin-beta receptor. The minor complex is lymphotoxin-alpha 2/beta 1. LTB is an inducer of the inflammatory response system and involved in normal development of lymphoid tissue. Lymphotoxin-beta isoform b is unable to complex with lymphotoxin-alpha suggesting a function for lymphotoxin-beta which is independent of lymphotoxin-alpha. Alternative splicing results in multiple transcript variants encoding different isoforms. [provided by RefSeq, Jul 2008],
Function :	function:Cytokine that binds to LTBR/TNFRSF3. May play a specific role in immune response regulation. Provides the membrane anchor for the attachment of the heterotrimeric complex to the cell surface. Isoform 2 is probably non-functional.,similarity:Belongs to the tumor necrosis factor family.,subunit:Heterotrimer of either two LTB and one LTA subunits or (less prevalent) one LTB and two LTA subunits.,tissue specificity:Spleen and thymus.,
Subcellular Location :	Membrane ; Single-pass type II membrane protein .
Expression :	Spleen and thymus.
Sort :	9283
No4 :	1
Host :	Rabbit
Modifications :	Unmodified

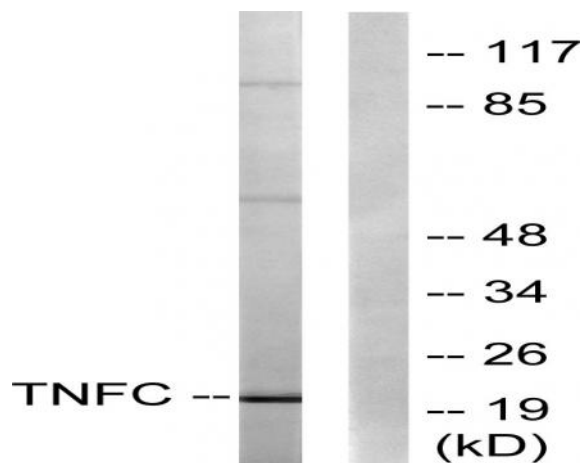
Products Images



Western Blot analysis of various cells using LT- β Polyclonal Antibody



Immunofluorescence analysis of HeLa cells, using TNFC Antibody. The picture on the right is blocked with the synthesized peptide.



Western blot analysis of lysates from HepG2 cells, using TNFC Antibody. The lane on the right is blocked with the synthesized peptide.