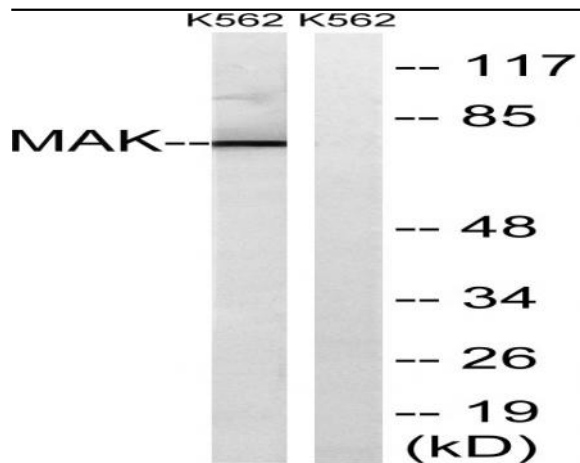


MAK Polyclonal Antibody

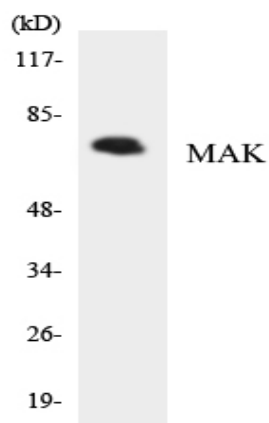
Catalog No :	YT2628
Reactivity :	Human;Mouse;Rat
Applications :	WB;ELISA
Target :	MAK
Gene Name :	MAK
Protein Name :	Serine/threonine-protein kinase MAK
Human Gene Id :	4117
Human Swiss Prot No :	P20794
Mouse Gene Id :	17152
Mouse Swiss Prot No :	Q04859
Rat Gene Id :	25677
Rat Swiss Prot No :	P20793
Immunogen :	The antiserum was produced against synthesized peptide derived from human MAK. AA range:126-175
Specificity :	MAK Polyclonal Antibody detects endogenous levels of MAK protein.
Formulation :	Liquid in PBS containing 50% glycerol, 0.5% BSA and 0.02% sodium azide.
Source :	Polyclonal, Rabbit,IgG
Dilution :	WB 1:500 - 1:2000. ELISA: 1:40000. Not yet tested in other applications.
Purification :	The antibody was affinity-purified from rabbit antiserum by affinity-chromatography using epitope-specific immunogen.

Concentration :	1 mg/ml
Storage Stability :	-15°C to -25°C/1 year(Do not lower than -25°C)
Observed Band :	71kD
Background :	<p>The product of this gene is a serine/threonine protein kinase related to kinases involved in cell cycle regulation. Studies of the mouse and rat homologs have localized the kinase to the chromosomes during meiosis in spermatogenesis, specifically to the synaptonemal complex that exists while homologous chromosomes are paired. Mutations in this gene have been associated with ciliary defects resulting in retinitis pigmentosa 62. Alternative splicing results in multiple transcript variants. [provided by RefSeq, Jan 2016],</p>
Function :	<p>catalytic activity:ATP + a protein = ADP + a phosphoprotein.,function:Could play an important function in spermatogenesis.,similarity:Belongs to the protein kinase superfamily.,similarity:Belongs to the protein kinase superfamily. CMGC Ser/Thr protein kinase family. CDC2/CDKX subfamily.,similarity:Contains 1 protein kinase domain.,tissue specificity:Expressed mainly in testicular cells at and after meiosis.,</p>
Subcellular Location :	<p>Nucleus. Cytoplasm, cytoskeleton, microtubule organizing center, centrosome. Cytoplasm, cytoskeleton, spindle. Midbody. Cell projection, cilium, photoreceptor outer segment . Photoreceptor inner segment. Localized in both the connecting cilia and the outer segment axonemes (By similarity). Localized uniformly in nuclei during interphase, to the mitotic spindle and centrosomes during metaphase and anaphase, and also to midbody at anaphase until telophase. .</p>
Expression :	<p>Expressed in prostate cancer cell lines at generally higher levels than in normal prostate epithelial cell lines. Isoform 1 is expressed in kidney, testis, lung, trachea, and retina. Isoform 2 is retina-specific where it is expressed in rod and cone photoreceptors.</p>
Sort :	9343
No4 :	1
Host :	Rabbit
Modifications :	Unmodified

Products Images



Western blot analysis of lysates from K562 cells, using MAK Antibody. The lane on the right is blocked with the synthesized peptide.



Western blot analysis of the lysates from HepG2 cells using MAK antibody.