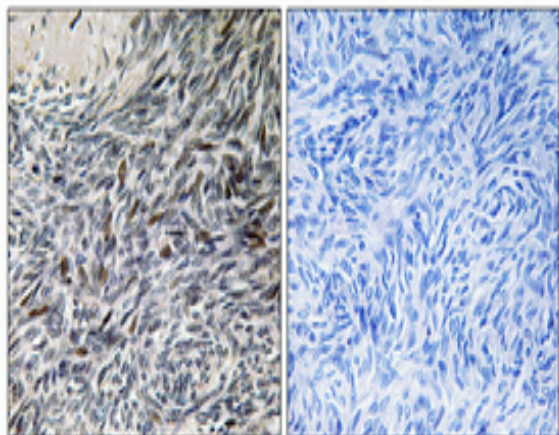


MCM4 Polyclonal Antibody

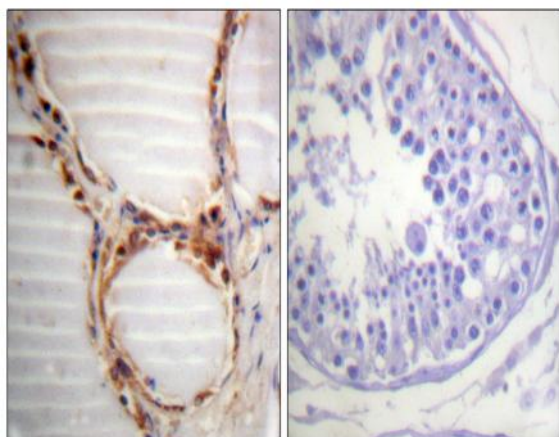
Catalog No :	YT2681
Reactivity :	Human;Mouse
Applications :	WB;IHC;IF;ELISA
Target :	MCM4
Fields :	>>DNA replication;>>Cell cycle
Gene Name :	MCM4
Protein Name :	DNA replication licensing factor MCM4
Human Gene Id :	4173
Human Swiss Prot No :	P33991
Mouse Gene Id :	17217
Mouse Swiss Prot No :	P49717
Immunogen :	The antiserum was produced against synthesized peptide derived from human MCM4. AA range:20-69
Specificity :	MCM4 Polyclonal Antibody detects endogenous levels of MCM4 protein.
Formulation :	Liquid in PBS containing 50% glycerol, 0.5% BSA and 0.02% sodium azide.
Source :	Polyclonal, Rabbit,IgG
Dilution :	WB 1:500 - 1:2000. IHC 1:100 - 1:300. ELISA: 1:20000.. IF 1:50-200
Purification :	The antibody was affinity-purified from rabbit antiserum by affinity-chromatography using epitope-specific immunogen.
Concentration :	1 mg/ml

Storage Stability :	<u>-15°C to -25°C/1 year(Do not lower than -25°C)</u>
Observed Band :	<u>96kD</u>
Cell Pathway :	<u>DNA replication;Cell_Cycle_G1S;Cell_Cycle_G2M_DNA;</u>
Background :	<p>The protein encoded by this gene is one of the highly conserved mini-chromosome maintenance proteins (MCM) that are essential for the initiation of eukaryotic genome replication. The hexameric protein complex formed by MCM proteins is a key component of the pre-replication complex (pre_RC) and may be involved in the formation of replication forks and in the recruitment of other DNA replication related proteins. The MCM complex consisting of this protein and MCM2, 6 and 7 proteins possesses DNA helicase activity, and may act as a DNA unwinding enzyme. The phosphorylation of this protein by CDC2 kinase reduces the DNA helicase activity and chromatin binding of the MCM complex. This gene is mapped to a region on the chromosome 8 head-to-head next to the PRKDC/DNA-PK, a DNA-activated protein kinase involved in the repair of DNA double-strand breaks. Alternatively spliced transcri</p>
Function :	<p>function:Involved in the control of DNA replication.,similarity:Belongs to the MCM family.,similarity:Contains 1 MCM domain.,</p>
Subcellular Location :	<p>Nucleus . Chromosome . Associated with chromatin before the formation of nuclei and detaches from it as DNA replication progresses. .</p>
Expression :	<u>Cervix,Epithelium,Testis,</u>
Sort :	<u>9467</u>
No4 :	<u>1</u>
Host :	<u>Rabbit</u>
Modifications :	<u>Unmodified</u>

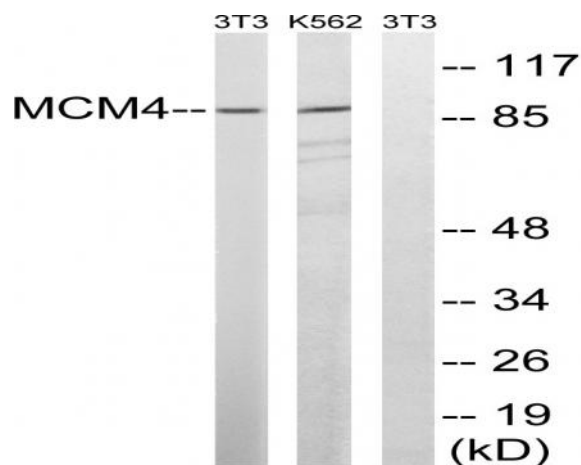
Products Images



Immunohistochemical analysis of paraffin-embedded Human ovary. Antibody was diluted at 1:100(4° overnight). High-pressure and temperature Tris-EDTA,pH8.0 was used for antigen retrieval. Negative contrl (right) obtaned from antibody was pre-absorbed by immunogen peptide.



Immunohistochemistry analysis of paraffin-embedded human testis tissue, using MCM4 Antibody. The picture on the right is blocked with the synthesized peptide.



Western blot analysis of lysates from NIH/3T3 and K562 cells, using MCM4 Antibody. The lane on the right is blocked with the synthesized peptide.