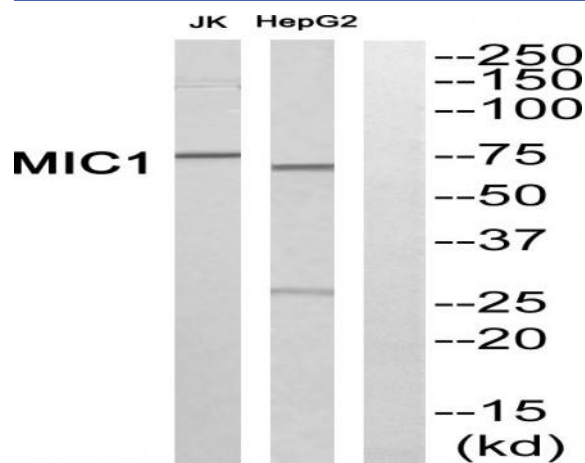


## Mic-1 Polyclonal Antibody

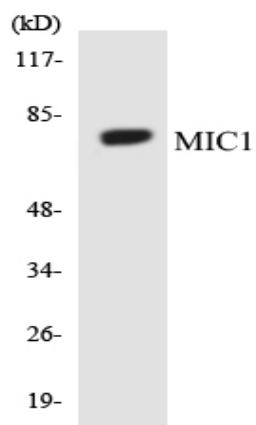
<b>Catalog No :</b>	YT2757
<b>Reactivity :</b>	Human;Mouse
<b>Applications :</b>	WB;ELISA;IHC
<b>Target :</b>	Mic-1
<b>Gene Name :</b>	C18orf8
<b>Protein Name :</b>	Uncharacterized protein C18orf8
<b>Human Gene Id :</b>	29919
<b>Human Swiss Prot No :</b>	Q96DM3
<b>Mouse Gene Id :</b>	76482
<b>Mouse Swiss Prot No :</b>	Q8VC42
<b>Immunogen :</b>	The antiserum was produced against synthesized peptide derived from human MIC1. AA range:591-640
<b>Specificity :</b>	Mic-1 Polyclonal Antibody detects endogenous levels of Mic-1 protein.
<b>Formulation :</b>	Liquid in PBS containing 50% glycerol, 0.5% BSA and 0.02% sodium azide.
<b>Source :</b>	Polyclonal, Rabbit,IgG
<b>Dilution :</b>	WB 1:500-2000;IHC 1:50-300; ELISA 2000-20000
<b>Purification :</b>	The antibody was affinity-purified from rabbit antiserum by affinity-chromatography using epitope-specific immunogen.
<b>Concentration :</b>	1 mg/ml
<b>Storage Stability :</b>	-15°C to -25°C/1 year(Do not lower than -25°C)

<b>Observed Band :</b>	75kD
<b>Background :</b>	This gene encodes a colon cancer associated protein. [provided by RefSeq, Jan 2013],
<b>Function :</b>	similarity:Contains 1 Mic1 domain.,
<b>Subcellular Location :</b>	Lysosome membrane . Late endosome membrane .
<b>Expression :</b>	Colon carcinoma,Epithelium,Lung,Synovium,
<b>Sort :</b>	9634
<b>No4 :</b>	1
<b>Host :</b>	Rabbit
<b>Modifications :</b>	Unmodified

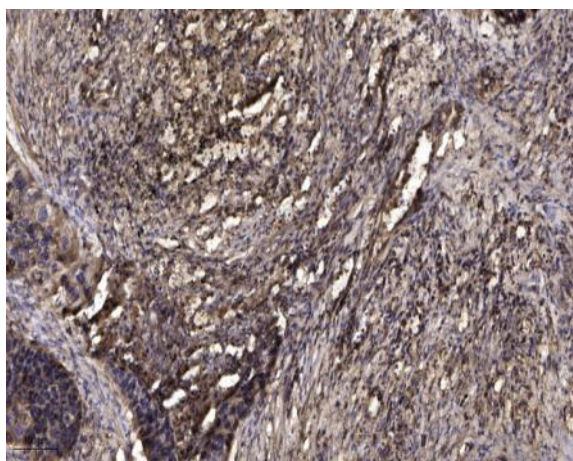
## Products Images



Western blot analysis of MIC1 Antibody. The lane on the right is blocked with the MIC1 peptide.



Western blot analysis of the lysates from HeLa cells using MIC1 antibody.



Immunohistochemical analysis of paraffin-embedded human Squamous cell carcinoma of lung. 1, Antibody was diluted at 1:200(4° overnight). 2, Tris-EDTA,pH9.0 was used for antigen retrieval. 3,Secondary antibody was diluted at 1:200(room temperature, 45min).