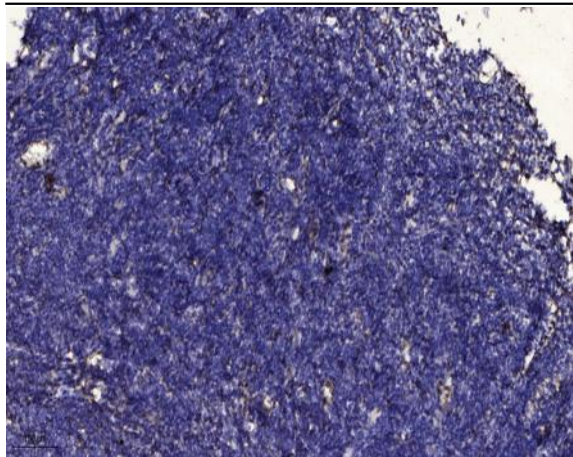


MIP-3 β Polyclonal Antibody

Catalog No :	YT2766
Reactivity :	Human;Mouse
Applications :	IHC;IF;ELISA
Target :	MIP-3 β
Fields :	>>Cytokine-cytokine receptor interaction;>>Viral protein interaction with cytokine and cytokine receptor;>>Chemokine signaling pathway;>>NF-kappa B signaling pathway
Gene Name :	CCL19
Protein Name :	C-C motif chemokine 19
Human Gene Id :	6363
Human Swiss Prot No :	Q99731
Mouse Swiss Prot No :	O70460
Immunogen :	Synthesized peptide derived from MIP-3 β . at AA range: 20-100
Specificity :	MIP-3 β Polyclonal Antibody detects endogenous levels of MIP-3 β protein.
Formulation :	Liquid in PBS containing 50% glycerol, 0.5% BSA and 0.02% sodium azide.
Source :	Polyclonal, Rabbit,IgG
Dilution :	IHC 1:100 - 1:300. ELISA: 1:40000.. IF 1:50-200
Purification :	The antibody was affinity-purified from rabbit antiserum by affinity-chromatography using epitope-specific immunogen.
Concentration :	1 mg/ml
Storage Stability :	-15°C to -25°C/1 year(Do not lower than -25°C)

Molecularweight :	11kD
Cell Pathway :	Cytokine-cytokine receptor interaction;Chemokine;
Background :	<p>This antimicrobial gene is one of several CC cytokine genes clustered on the p-arm of chromosome 9. Cytokines are a family of secreted proteins involved in immunoregulatory and inflammatory processes. The CC cytokines are proteins characterized by two adjacent cysteines. The cytokine encoded by this gene may play a role in normal lymphocyte recirculation and homing. It also plays an important role in trafficking of T cells in thymus, and in T cell and B cell migration to secondary lymphoid organs. It specifically binds to chemokine receptor CCR7. [provided by RefSeq, Sep 2014],</p>
Function :	<p>function:May play a role not only in inflammatory and immunological responses but also in normal lymphocyte recirculation and homing. May play an important role in trafficking of T-cells in thymus, and T-cell and B-cell migration to secondary lymphoid organs. Specifically binds to chemokine receptor CCR7. Recombinant SCYA19 shows potent chemotactic activity for T-cells and B-cells but not for granulocytes and monocytes.,online information:CCL19 entry,similarity:Belongs to the intercrine beta (chemokine CC) family.,tissue specificity:Expressed at high levels in the lymph nodes, thymus and appendix. Intermediate levels seen in colon and trachea, while low levels found in spleen, small intestine, lung, kidney and stomach.,</p>
Subcellular Location :	Secreted.
Expression :	Expressed at high levels in the lymph nodes, thymus and appendix. Intermediate levels seen in colon and trachea, while low levels found in spleen, small intestine, lung, kidney and stomach.
Tag :	orthogonal
Sort :	9650
No4 :	1
Host :	Rabbit
Modifications :	Unmodified

Products Images



Immunohistochemical analysis of paraffin-embedded human tonsil. 1, Antibody was diluted at 1:200(4° overnight). 2, Tris-EDTA,pH9.0 was used for antigen retrieval. 3,Secondary antibody was diluted at 1:200(room temperature, 30min).