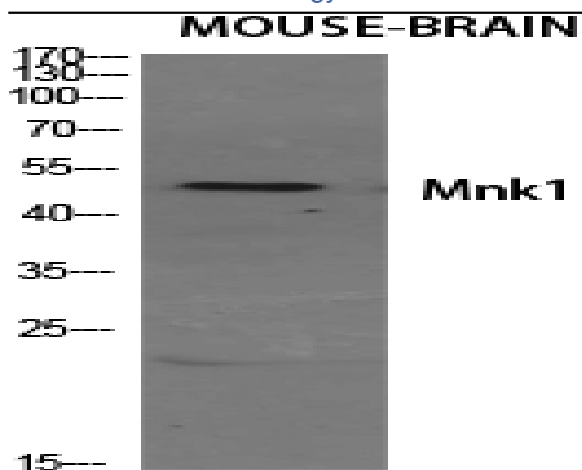


Mnk1 Polyclonal Antibody

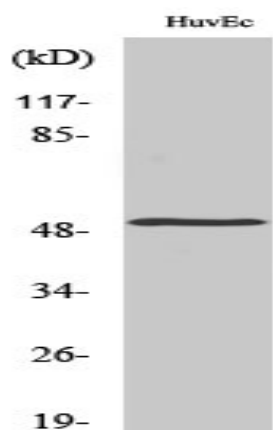
Catalog No :	YT2805
Reactivity :	Human;Mouse
Applications :	WB;IHC;IF;ELISA
Target :	Mnk1
Fields :	>>MAPK signaling pathway;>>HIF-1 signaling pathway;>>Insulin signaling pathway
Gene Name :	MKNK1
Protein Name :	MAP kinase-interacting serine/threonine-protein kinase 1
Human Gene Id :	8569
Human Swiss Prot No :	Q9BUB5
Mouse Gene Id :	17346
Mouse Swiss Prot No :	O08605
Immunogen :	The antiserum was produced against synthesized peptide derived from human MKNK1. AA range:111-160
Specificity :	Mnk1 Polyclonal Antibody detects endogenous levels of Mnk1 protein.
Formulation :	Liquid in PBS containing 50% glycerol, 0.5% BSA and 0.02% sodium azide.
Source :	Polyclonal, Rabbit,IgG
Dilution :	WB 1:500 - 1:2000. IHC 1:100 - 1:300. ELISA: 1:20000.. IF 1:50-200
Purification :	The antibody was affinity-purified from rabbit antiserum by affinity-chromatography using epitope-specific immunogen.
Concentration :	1 mg/ml

Storage Stability :	<u>-15°C to -25°C/1 year(Do not lower than -25°C)</u>
Observed Band :	<u>51kD</u>
Cell Pathway :	<u>MAPK_ERK_Growth;MAPK_G_Protein;Insulin_Receptor;</u>
Background :	<u>MAP kinase interacting serine/threonine kinase 1(MKNK1) Homo sapiens This gene encodes a Ser/Thr protein kinase that interacts with, and is activated by ERK1 and p38 mitogen-activated protein kinases, and thus may play a role in the response to environmental stress and cytokines. This kinase may also regulate transcription by phosphorylating eIF4E via interaction with the C-terminal region of eIF4G. Alternatively spliced transcript variants have been noted for this gene. [provided by RefSeq, Jan 2012],</u>
Function :	<u>catalytic activity:ATP + a protein = ADP + a phosphoprotein.,cofactor:Magnesium.,enzyme regulation:Phosphorylated and activated by the p38 kinases and kinases in the Erk pathway.,function:May play a role in the response to environmental stress and cytokines. Appears to regulate transcription by phosphorylating EIF4E, thus increasing the affinity of this protein for the 7-methylguanosine-containing mRNA cap.,PTM: Dual phosphorylation of Thr-250 and Thr-255 activates the kinase. Phosphorylation of Thr-385 activates the kinase.,similarity:Belongs to the protein kinase superfamily.,similarity:Belongs to the protein kinase superfamily. CAMK Ser/Thr protein kinase family.,similarity:Contains 1 protein kinase domain.,subunit:Interacts with the C-terminal regions of EIF4G1 and EIF4G2. Also binds to dephosphorylated ERK1 and ERK2, and to the p38 kinases.,tissue specificity:Ubiquitous.,</u>
Subcellular Location :	<u>[Isoform 2]: Cytoplasm.; [Isoform 3]: Cytoplasm. Nucleus.</u>
Expression :	<u>Ubiquitous.</u>
Sort :	<u>9725</u>
No4 :	<u>1</u>
Host :	<u>Rabbit</u>
Modifications :	<u>Unmodified</u>

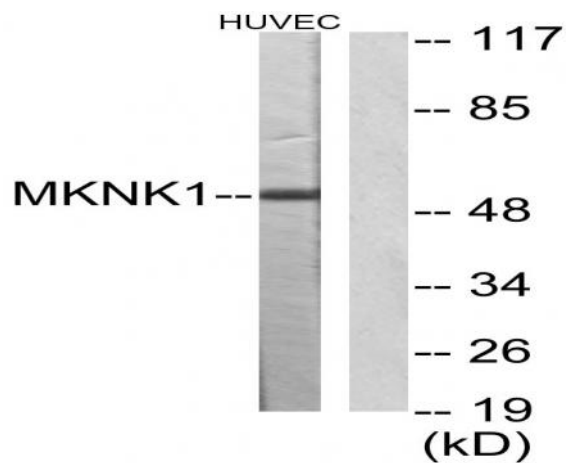
Products Images



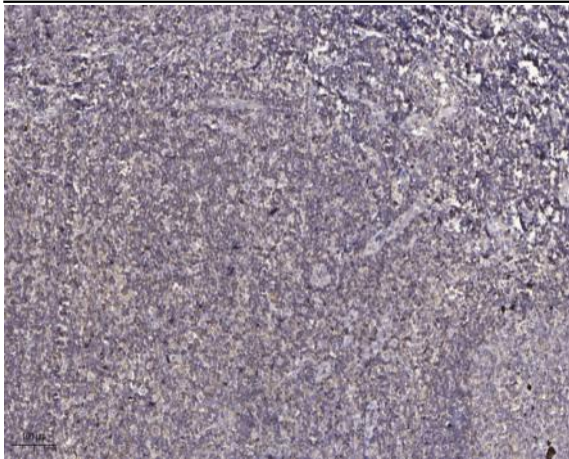
Western Blot analysis of various cells using Mnk1 Polyclonal Antibody diluted at 1:500



Western Blot analysis of HuvEc cells using Mnk1 Polyclonal Antibody diluted at 1:500



Western blot analysis of lysates from HUVEC cells, using MKNK1 Antibody. The lane on the right is blocked with the synthesized peptide.



Immunohistochemical analysis of paraffin-embedded human tonsil. 1, Antibody was diluted at 1:200(4° overnight). 2, Tris-EDTA,pH9.0 was used for antigen retrieval. 3,Secondary antibody was diluted at 1:200(room temperature, 30min).