

**mPR $\alpha$  Polyclonal Antibody**

<b>Catalog No :</b>	YT2825
<b>Reactivity :</b>	Human;Mouse
<b>Applications :</b>	WB;IHC
<b>Target :</b>	mPR $\alpha$
<b>Fields :</b>	>>Chemical carcinogenesis - receptor activation
<b>Gene Name :</b>	PAQR7
<b>Protein Name :</b>	Membrane progestin receptor alpha
<b>Human Gene Id :</b>	164091
<b>Human Swiss Prot No :</b>	Q86WK9
<b>Mouse Swiss Prot No :</b>	Q80ZE4
<b>Immunogen :</b>	The antiserum was produced against synthesized peptide derived from human MPRA. AA range:297-346
<b>Specificity :</b>	mPR $\alpha$ Polyclonal Antibody detects endogenous levels of mPR $\alpha$ protein.
<b>Formulation :</b>	Liquid in PBS containing 50% glycerol, 0.5% BSA and 0.02% sodium azide.
<b>Source :</b>	Polyclonal, Rabbit,IgG
<b>Dilution :</b>	WB 1:500-2000;IHC 1:50-300
<b>Purification :</b>	The antibody was affinity-purified from rabbit antiserum by affinity-chromatography using epitope-specific immunogen.
<b>Concentration :</b>	1 mg/ml
<b>Storage Stability :</b>	-15°C to -25°C/1 year(Do not lower than -25°C)

**Observed Band :** 40kD

**Background :** function:Steroid membrane receptor. Binds progesterone in vitro. May be involved in oocyte maturation.,similarity:Belongs to the ADIPOR family.,tissue specificity:Expressed in ovary, testis, placenta, uterus and bladder.,

**Function :** function:Steroid membrane receptor. Binds progesterone in vitro. May be involved in oocyte maturation.,similarity:Belongs to the ADIPOR family.,tissue specificity:Expressed in ovary, testis, placenta, uterus and bladder.,

**Subcellular Location :** Cell membrane ; Multi-pass membrane protein .

**Expression :** Expressed in a wide range of tissues including ovary, testis, placenta, uterus and bladder.

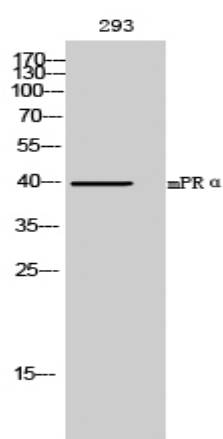
**Sort :** 10197

**No4 :** 1

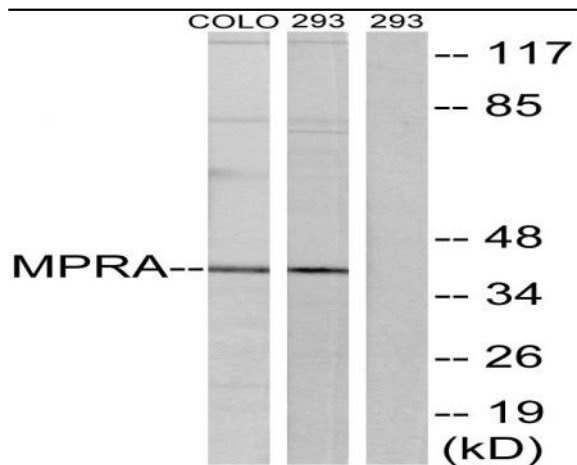
**Host :** Rabbit

**Modifications :** Unmodified

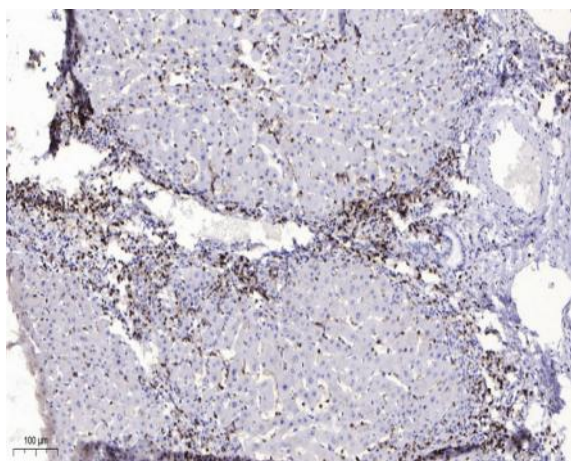
## Products Images



Western Blot analysis of 293 cells using mPR $\alpha$  Polyclonal Antibody



Western blot analysis of lysates from 293 and COLO cells, using MPRA Antibody. The lane on the right is blocked with the synthesized peptide.



Immunohistochemical analysis of paraffin-embedded human liver cancer. 1, Antibody was diluted at 1:200(4° overnight). 2, Tris-EDTA,pH9.0 was used for antigen retrieval. 3,Secondary antibody was diluted at 1:200(room temperature, 45min).