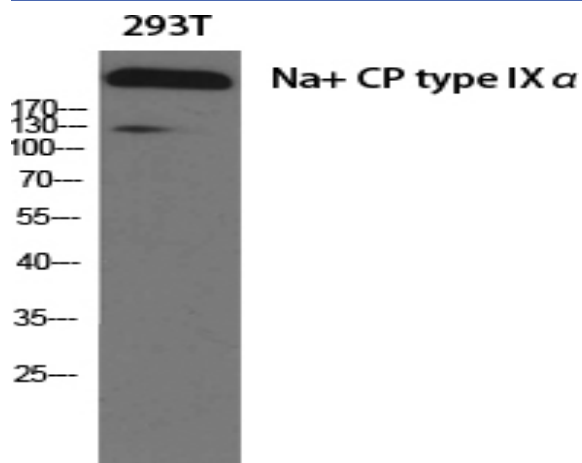


Na⁺ CP type IX α Polyclonal Antibody

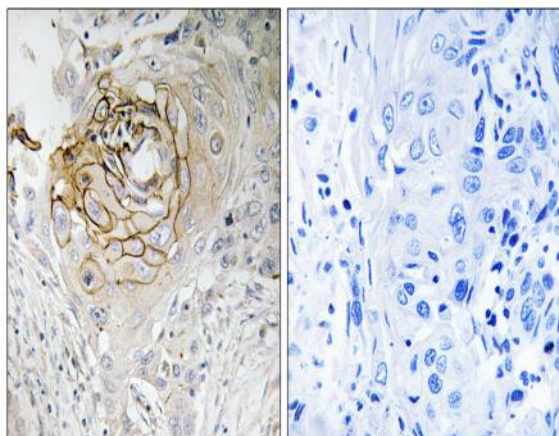
Catalog No :	YT2967
Reactivity :	Human;Mouse;Rat
Applications :	WB;IHC;IF;ELISA
Target :	Na ⁺ CP type IX α
Fields :	>>Taste transduction
Gene Name :	SCN9A
Protein Name :	Sodium channel protein type 9 subunit alpha
Human Gene Id :	6335
Human Swiss Prot No :	Q15858
Mouse Swiss Prot No :	Q62205
Rat Gene Id :	78956
Rat Swiss Prot No :	O08562
Immunogen :	The antiserum was produced against synthesized peptide derived from human SCN9A. AA range:651-700
Specificity :	Na ⁺ CP type IX α Polyclonal Antibody detects endogenous levels of Na ⁺ CP type IX α protein.
Formulation :	Liquid in PBS containing 50% glycerol, 0.5% BSA and 0.02% sodium azide.
Source :	Polyclonal, Rabbit,IgG
Dilution :	WB 1:500 - 1:2000. IHC 1:100 - 1:300. ELISA: 1:40000.. IF 1:50-200
Purification :	The antibody was affinity-purified from rabbit antiserum by affinity-chromatography using epitope-specific immunogen.

Concentration :	1 mg/ml
Storage Stability :	-15°C to -25°C/1 year(Do not lower than -25°C)
Observed Band :	220kD
Background :	This gene encodes a voltage-gated sodium channel which plays a significant role in nociception signaling. Mutations in this gene have been associated with primary erythralgia, channelopathy-associated insensitivity to pain, and paroxysmal extreme pain disorder. [provided by RefSeq, Aug 2009],
Function :	disease:Defects in SCN9A are a cause of paroxysmal extreme pain disorder (PEPD) [MIM:167400]; previously known as familial rectal pain (FRP). PEPD is an autosomal dominant paroxysmal disorder of pain and autonomic dysfunction. The distinctive features are paroxysmal episodes of burning pain in the rectal, ocular, and mandibular areas accompanied by autonomic manifestations such as skin flushing.,disease:Defects in SCN9A are the cause of autosomal recessive congenital indifference to pain [MIM:243000]; also known as channelopathy-associated insensitivity to pain. Affected individuals have a congenital inability to perceive any form of pain, in any part of the body. All other sensory modalities are preserved and the peripheral and central nervous systems are apparently intact. Patients perceive the sensations of touch, warm and cold temperature, proprioception, tickle and pressure, but not
Subcellular Location :	Cell membrane ; Multi-pass membrane protein . Cell projection, neuron projection . In neurite terminals. .
Expression :	Expressed strongly in dorsal root ganglion, with only minor levels elsewhere in the body, smooth muscle cells, MTC cell line and C-cell carcinoma. Also expressed in vagus nerves within the head and neck region (PubMed:31647222). Isoform 1 is expressed preferentially in the central and peripheral nervous system. Isoform 2 is expressed preferentially in the dorsal root ganglion.
Tag :	hot
Sort :	10537
No4 :	1
Host :	Rabbit
Modifications :	Unmodified

Products Images



Western Blot analysis of various cells using Na⁺ CP type IX α Polyclonal Antibody diluted at 1:1000



Immunohistochemistry analysis of paraffin-embedded human lung carcinoma tissue, using SCN9A Antibody. The picture on the right is blocked with the synthesized peptide.